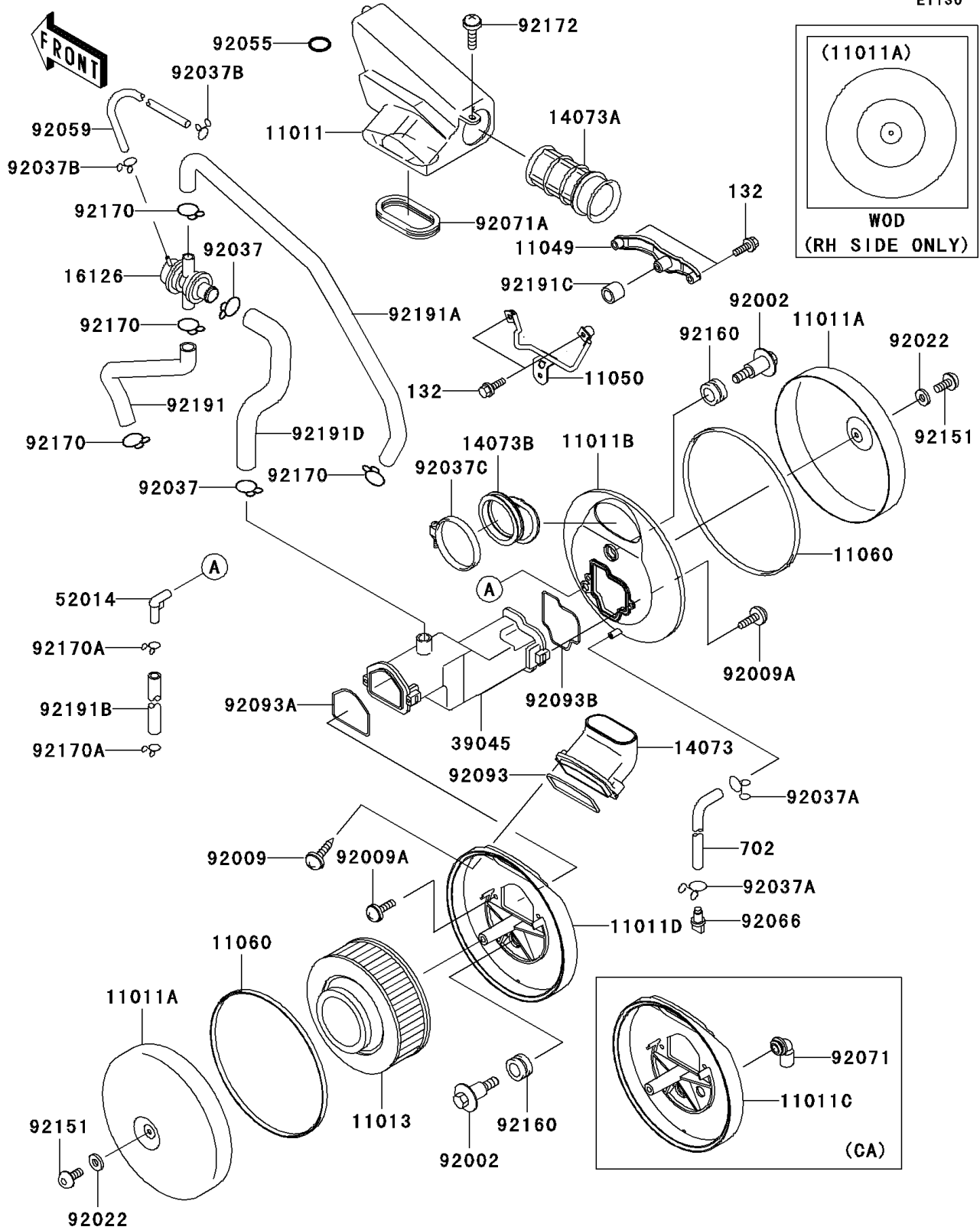


2001 Vulcan 1500 Classic PARTS DIAGRAM

Air Cleaner

E1130



2001 Vulcan 1500 Classic PARTS LIST

Air Cleaner

ITEM NAME	PART NUMBER	QUANTITY
CASE-AIR FILTER,CENTER (Ref # 11011)	11011-1488	1
CASE-AIR FILTER,OUTSIDE (Ref # 11011A)	11011-1489	2
CASE-AIR FILTER,RH (Ref # 11011B)	11011-1529	1
ELEMENT-AIR FILTER (Ref # 11013)	11013-1248	1
BRACKET,AIR FILTER,RH (Ref # 11049)	11049-1539	1
BRACKET,AIR FILTER,LH (Ref # 11050)	11050-1510	1
GASKET,AIR FILTER CASE,LH (Ref # 11060)	11060-1736	2
DUCT,AIR FILTER,LH (Ref # 14073)	14073-1658	1
DUCT (Ref # 14073A)	14073-1660	1
DUCT,AIR FILTER,RH (Ref # 14073B)	14073-1712	1
VALVE,AIR SWITCH (Ref # 16126)	16126-1356	1
DUCT-ASSY (Ref # 39045)	39045-1056	1
ELBOW (Ref # 52014)	52014-1083	1
BOLT (Ref # 92002)	92002-1595	2
SCREW,TAPPING,5X16 (Ref # 92009)	92009-1264	2
SCREW,5X20 (Ref # 92009A)	92009-1905	4
WASHER,6.5X20X1.6,WHITE (Ref # 92022)	92022-193	2
CLAMP,TUBE (Ref # 92037)	92037-1076	2
CLAMP,TUBE (Ref # 92037A)	92037-147	2
CLAMP (Ref # 92037B)	92037-1712	2
CLAMP (Ref # 92037C)	92037-1859	1
RING-O (Ref # 92055)	92055-1282	1
TUBE,4X9X290 (Ref # 92059)	92059-1133	1
PLUG,DRAIN (Ref # 92066)	92066-1211	1
GROMMET (Ref # 92071A)	92071-1233	1
SEAL,AIR FILTER CASE (Ref # 92093)	92093-1408	1
SEAL,DUCT,LH (Ref # 92093A)	92093-1459	1
SEAL,DUCT,RH (Ref # 92093B)	92093-1460	1
BOLT,6X14 (Ref # 92151)	92151-1503	2

2001 Vulcan 1500 Classic PARTS LIST

Air Cleaner

ITEM NAME	PART NUMBER	QUANTITY
DAMPER (Ref # 92160)	92160-1594	2
CLAMP,TUBE (Ref # 92170)	92170-1445	4
CLAMP (Ref # 92170A)	92170-1695	2
SCREW,6X14 (Ref # 92172)	92172-0004	1
BOLT-FLANGED-SMALL (Ref # 132)	132J0625	4
TUBE-RUBBER (Ref # 702)	702A07260	1
TUBE,HEAD,FR-AIR SWITCH (Ref # 92191)	92191-1050	1
TUBE,HEAD,RR-AIR SWITCH (Ref # 92191A)	92191-1051	1
TUBE,BREATHER (Ref # 92191B)	92191-1054	1
TUBE,15.5X22.5X20 (Ref # 92191C)	92191-1089	1
TUBE,AIR SWITCH-DUCT (Ref # 92191D)	92191-1266	1
CASE-AIR FILTER,LH (Ref # 11011C)	11011-1533	1
CASE-AIR FILTER,LH (Ref # 11011D)	11011-1570	1
GROMMET,AIR FILTER (Ref # 92071)	92071-1114	1