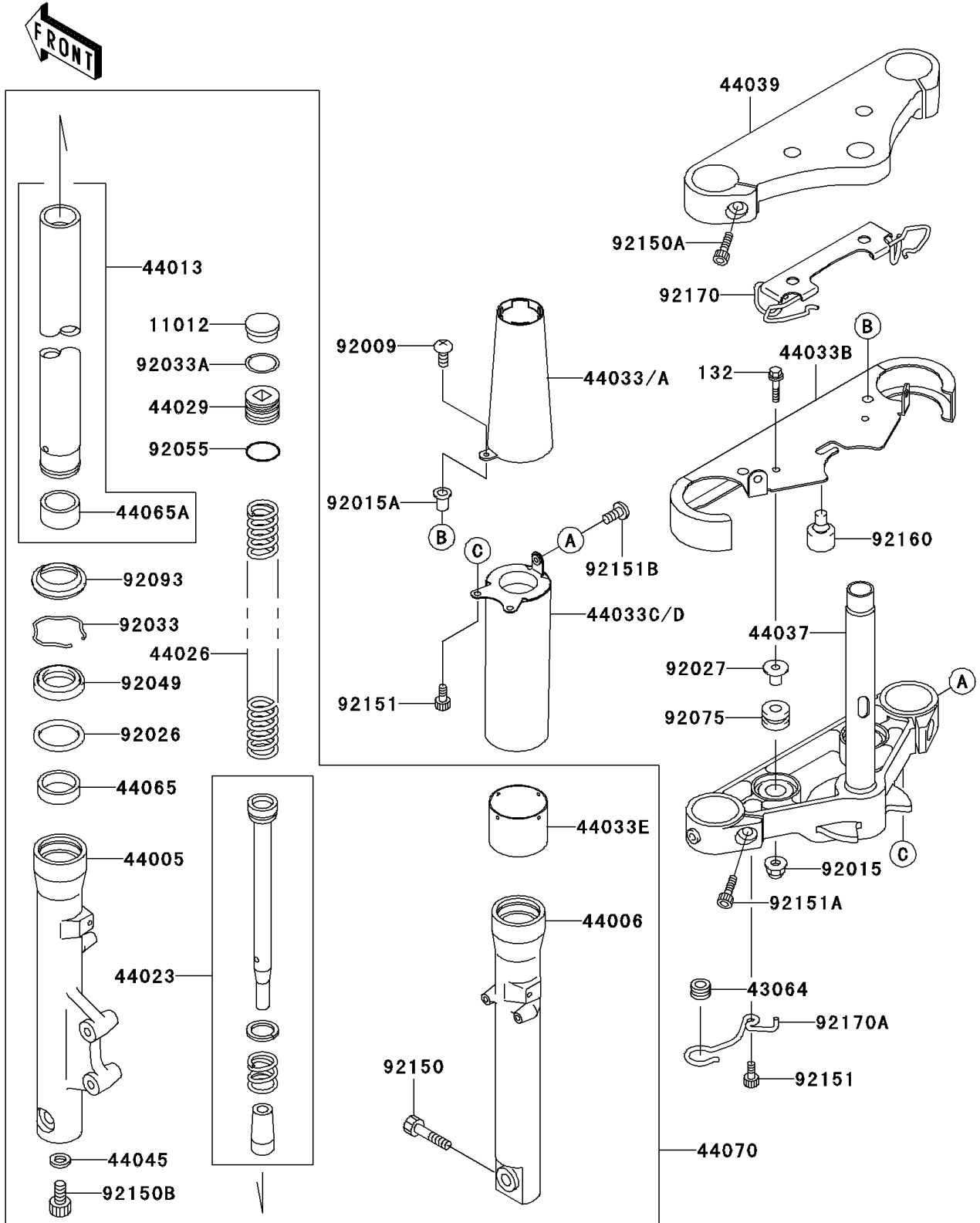


1996 Vulcan 1500 Classic PARTS DIAGRAM

Front Fork

F2340



1996 Vulcan 1500 Classic PARTS LIST

Front Fork

| ITEM NAME | PART NUMBER | QUANTITY |
|--|-------------|----------|
| CAP,FORK TOP (Ref # 11012) | 11012-1618 | 2 |
| GROMMET,HOSE CLAMP (Ref # 43064) | 43064-006 | 1 |
| PIPE-LEFT FORK OUTER (Ref # 44005) | 44005-1366 | 1 |
| PIPE-RIGHT FORK OUTER (Ref # 44006) | 44006-1365 | 1 |
| PIPE-FORK INNER (Ref # 44013) | 44013-1423 | 2 |
| CYLINDER-COMP-FORK (Ref # 44023) | 44023-1100 | 2 |
| SPRING-FRONT FORK (Ref # 44026) | 44026-1608 | 2 |
| SEAT-FORK SPRING (Ref # 44029) | 44029-1125 | 2 |
| COVER-FORK,UPP,LH (Ref # 44033) | 44033-1215 | 1 |
| COVER-FORK,UPP,RH (Ref # 44033A) | 44033-1216 | 1 |
| COVER-FORK,LWR (Ref # 44033B) | 44033-1217 | 1 |
| COVER-FORK,UNDER,LH (Ref # 44033C) | 44033-1221 | 1 |
| COVER-FORK,UNDER,RH (Ref # 44033D) | 44033-1222 | 1 |
| COVER-FORK (Ref # 44033E) | 44033-1223 | 2 |
| HOLDER-FORK UNDER (Ref # 44037) | 44037-1344 | 1 |
| HOLDER-FORK UPPER (Ref # 44039) | 44039-1260 | 1 |
| GASKET,FORK CYLINDER BOLT (Ref # 44045) | 44045-051 | 2 |
| BUSHING-FRONT FORK (Ref # 44065) | 44065-1079 | 2 |
| BUSHING-FRONT FORK,INNER PIPE (Ref # 44065A) | 44065-1087 | 2 |
| DAMPER-ASSY,FORK (Ref # 44070) | 44070-1486 | 1 |
| SCREW,5X16 (Ref # 92009) | 92009-1654 | 2 |
| NUT,CAP,6MM (Ref # 92015) | 92015-1385 | 2 |
| NUT,WELL,5MM (Ref # 92015A) | 92015-1757 | 2 |
| SPACER,FORK OUTER (Ref # 92026) | 92026-1276 | 2 |
| COLLAR,L=16.1 (Ref # 92027) | 92027-1847 | 2 |
| RING-SNAP,FORK OUTER (Ref # 92033) | 92033-1222 | 2 |
| RING-SNAP,SPRING SEAT (Ref # 92033A) | 92033-1223 | 2 |
| SEAL-OIL,FORK (Ref # 92049) | 92049-1363 | 2 |
| RING-O,SPRING SEAT (Ref # 92055) | 92055-1363 | 2 |

1996 Vulcan 1500 Classic PARTS LIST

Front Fork

| ITEM NAME | PART NUMBER | QUANTITY |
|---------------------------------|-------------|----------|
| DAMPER (Ref # 92075) | 92075-1035 | 2 |
| SEAL,FORK (Ref # 92093) | 92093-1268 | 2 |
| BOLT,SOCKET,10X40 (Ref # 92150) | 92150-1029 | 1 |
| BOLT,SOCKET,8MM (Ref # 92150A) | 92150-1031 | 2 |
| BOLT,SOCKET,8X18 (Ref # 92150B) | 92150-1432 | 2 |
| BOLT,SOCKET,6X14 (Ref # 92151) | 92151-1068 | 4 |
| BOLT (Ref # 92151A) | 92151-1083 | 2 |
| BOLT,SOCKET,5X10 (Ref # 92151B) | 92151-1097 | 2 |
| DAMPER (Ref # 92160) | 92160-1555 | 2 |
| CLAMP,CABLE (Ref # 92170) | 92170-1655 | 1 |
| CLAMP,CABLE (Ref # 92170A) | 92170-1658 | 1 |
| BOLT-FLANGED-SMALL (Ref # 132) | 132E0630 | 2 |