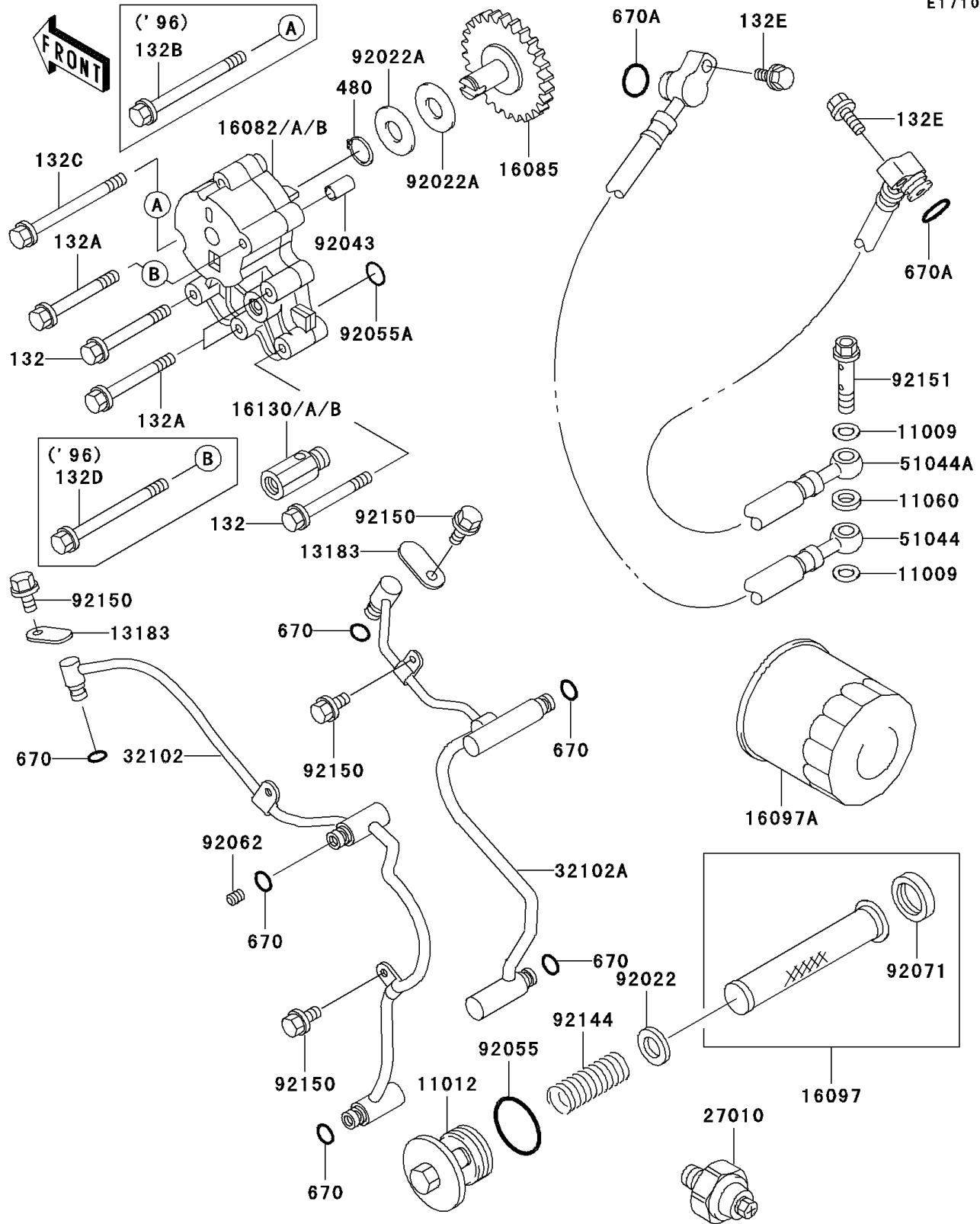


# 1996 Vulcan 1500 Classic PARTS DIAGRAM

Oil Pump/Oil Filter

E1710



# 1996 Vulcan 1500 Classic PARTS LIST

## Oil Pump/Oil Filter

| ITEM NAME                                | PART NUMBER | QUANTITY |
|--|-------------|----------|
| BOLT-FLANGED-SMALL (Ref # 132)           | 132G0645    | 2        |
| BOLT-FLANGED-SMALL (Ref # 132A)          | 132G0655    | 2        |
| BOLT-FLANGED-SMALL (Ref # 132B)          | 132G0660    | 1        |
| BOLT-FLANGED-SMALL (Ref # 132D)          | 132G0670    | 1        |
| BOLT-FLANGED-SMALL (Ref # 132E)          | 132J0625    | 2        |
| CIRCLIP-TYPE-C,12MM (Ref # 480)          | 480J1200    | 1        |
| GASKET,OIL PIPE,8.2X14X1.0 (Ref # 11009) | 11009-1344  | 2        |
| CAP,OIL FILTER (Ref # 11012)             | 11012-1461  | 1        |
| GASKET,PIPE JOINT (Ref # 11060)          | 11060-1739  | 1        |
| PLATE (Ref # 13183)                      | 13183-1071  | 2        |
| PUMP-ASSY-OIL (Ref # 16082)              | 16082-1143  | 1        |
| PUMP-ASSY-OIL (Ref # 16082A)             | 16082-1149  | 1        |
| GEAR,OIL PUMP,39T (Ref # 16085)          | 16085-1177  | 1        |
| FILTER-ASSY-OIL (Ref # 16097)            | 16097-1058  | 1        |
| FILTER-ASSY-OIL (Ref # 16097A)           | 16097-1063  | 1        |
| VALVE-ASSY-RELIEF (Ref # 16130)          | 16130-1001  | 1        |
| VALVE-ASSY-RELIEF (Ref # 16130B)         | 16130-1059  | 1        |
| SWITCH,OIL PRESSURE (Ref # 27010)        | 27010-1360  | 1        |
| PIPE (Ref # 32102)                       | 32102-1408  | 1        |
| PIPE (Ref # 32102A)                      | 32102-1409  | 1        |
| TUBE-ASSY,FR (Ref # 51044)               | 51044-1182  | 1        |
| TUBE-ASSY,RR (Ref # 51044A)              | 51044-1183  | 1        |
| WASHER,20.1X28X1 (Ref # 92022)           | 92022-1547  | 1        |
| WASHER,12X27.5X1.0 (Ref # 92022A)        | 92022-1852  | 2        |
| PIN,6.2X8X14 (Ref # 92043)               | 92043-1263  | 1        |
| RING-O,35.2X2.4 (Ref # 92055)            | 92055-1358  | 1        |
| RING-O,13.2X2.4 (Ref # 92055A)           | 92055-1373  | 2        |
| NOZZLE,6X8,GREEN (Ref # 92062)           | 92062-1078  | 1        |
| GROMMET,OIL STRAINER (Ref # 92071)       | 92071-100   | 1        |

# 1996 Vulcan 1500 Classic PARTS LIST

## Oil Pump/Oil Filter

| ITEM NAME                     | PART NUMBER | QUANTITY |
|-------------------------------|-------------|----------|
| SPRING (Ref # 92144)          | 92144-1106  | 1        |
| BOLT,6X12 (Ref # 92150)       | 92150-1868  | 5        |
| BOLT,BANJO,8X35 (Ref # 92151) | 92151-1355  | 1        |
| O RING,8MM (Ref # 670)        | 670D1508    | 6        |
| O RING (Ref # 670A)           | 670D2010    | 2        |