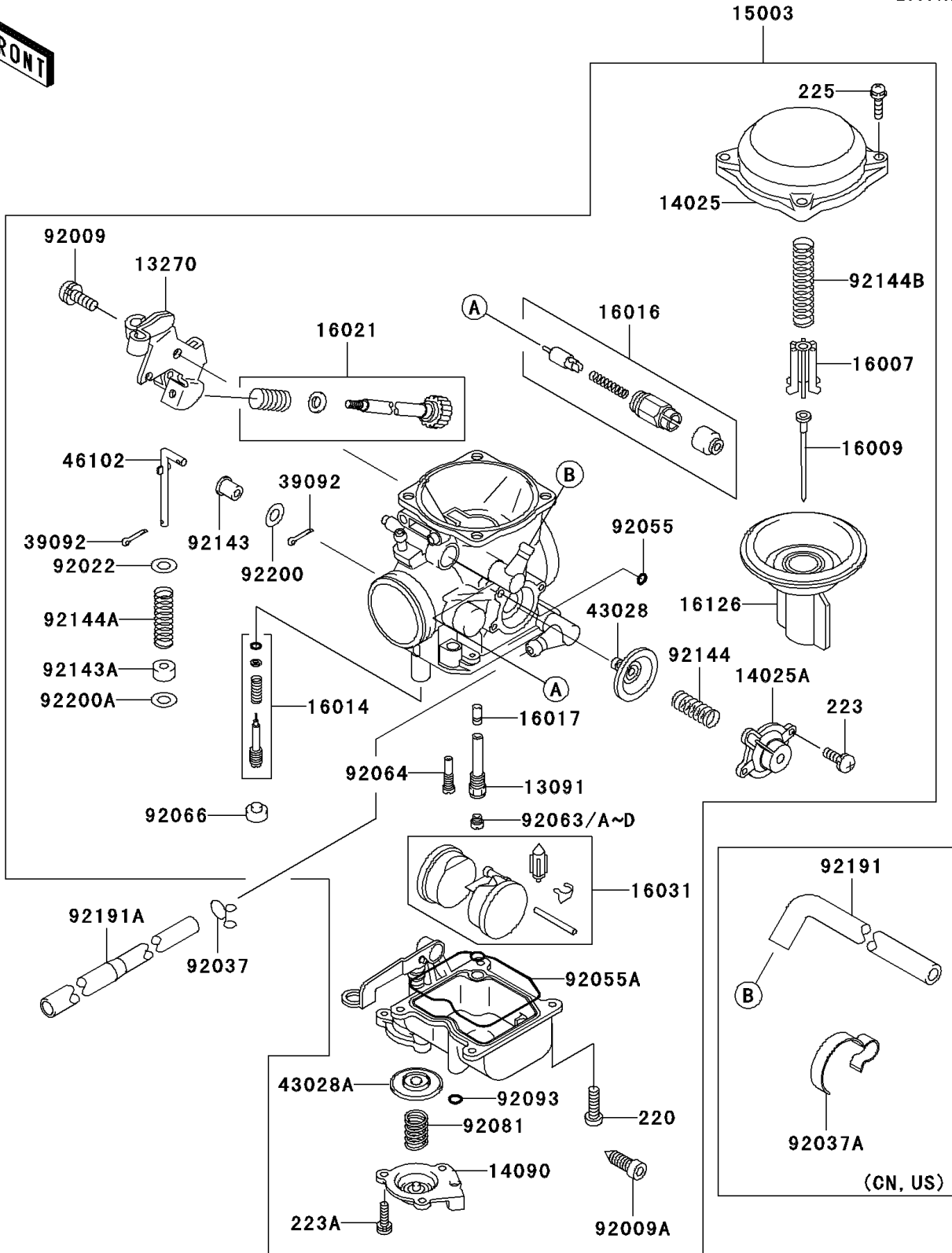


# 1997 Vulcan 1500 Classic PARTS DIAGRAM

Carburetor(VNT50AE045286-)

E1611A



# 1997 Vulcan 1500 Classic PARTS LIST

Carburetor(VNT50AE045286-)

| ITEM NAME                                 | PART NUMBER | QUANTITY |
|---|-------------|----------|
| HOLDER,NEEDLE JET (Ref # 13091)           | 13091-1944  | 1        |
| PLATE (Ref # 13270)                       | 13270-1513  | 1        |
| COVER,MIXING CHAMBER (Ref # 14025)        | 14025-1890  | 1        |
| COVER,AIR CUT VALVE (Ref # 14025A)        | 14025-1903  | 1        |
| COVER,ACCELERATOR (Ref # 14090)           | 14090-1635  | 1        |
| CARBURETOR-ASSY (Ref # 15003)             | 15003-1353  | 1        |
| SEAT-SPRING,DIAPHRAGM VALVE (Ref # 16007) | 16007-1113  | 1        |
| NEEDLE-JET,N3RB (Ref # 16009)             | 16009-1926  | 1        |
| SCREW-PILOT AIR (Ref # 16014)             | 16014-1082  | 1        |
| PLUNGER (Ref # 16016)                     | 16016-1087  | 1        |
| JET-NEEDLE,01B38 (Ref # 16017)            | 16017-1276  | 1        |
| SCREW-THROTTLE STOP (Ref # 16021)         | 16021-1212  | 1        |
| FLOAT (Ref # 16031)                       | 16031-1090  | 1        |
| VALVE,VACUUM (Ref # 16126)                | 16126-1325  | 1        |
| PIN-HAIR (Ref # 39092)                    | 39092-1058  | 2        |
| DIAPHRAGM,AIR CUT VALVE (Ref # 43028)     | 43028-1053  | 1        |
| DIAPHRAGM (Ref # 43028A)                  | 43028-1077  | 1        |
| ROD,ACCELERATOR PUMP (Ref # 46102)        | 46102-1400  | 1        |
| SCREW,5X10 (Ref # 92009)                  | 92009-1365  | 1        |
| SCREW,DRAIN,M6X0.75 (Ref # 92009A)        | 92009-1551  | 1        |
| WASHER,PLAIN,STOP SPRING (Ref # 92022)    | 92022-1480  | 1        |
| CLAMP,TUBE (Ref # 92037)                  | 92037-1531  | 1        |
| RING-O (Ref # 92055)                      | 92055-1245  | 1        |
| RING-O,FLOAT CHAMBER (Ref # 92055A)       | 92055-1518  | 1        |
| JET-MAIN,#135 (Ref # 92063)               | 92063-1014  | 1        |
| JET-MAIN,#138 (Ref # 92063A)              | 92063-1015  | 1        |
| JET-MAIN,#128 (Ref # 92063B)              | 92063-1074  | 1        |
| JET-MAIN,#130 (Ref # 92063C)              | 92063-1075  | 1        |
| JET-MAIN,#132 (Ref # 92063D)              | 92063-1076  | 1        |

# 1997 Vulcan 1500 Classic PARTS LIST

Carburetor(VNT50AE045286-)

| ITEM NAME                                | PART NUMBER | QUANTITY |
|--|-------------|----------|
| JET-PILOT,#45 (Ref # 92064)              | 92064-1177  | 1        |
| PLUG,PILOT AIR SCREW,6.9X2 (Ref # 92066) | 92066-1051  | 1        |
| SPRING,DIAPHRAGM (Ref # 92081)           | 92081-1092  | 1        |
| SEAL,"U"RING (Ref # 92093)               | 92093-1046  | 1        |
| COLLAR (Ref # 92143)                     | 92143-1790  | 1        |
| COLLAR (Ref # 92143A)                    | 92143-1791  | 1        |
| SCREW-PAN-CROS (Ref # 220)               | 220D0414    | 4        |
| SCREW-PAN-WS-CROS (Ref # 223)            | 223D0408    | 2        |
| SCREW-PAN-WS-CROS (Ref # 223A)           | 223D0410    | 3        |
| SCREW-PAN-WSP-CROS (Ref # 225)           | 225C0418    | 4        |
| SPRING,AIR CUT VALVE (Ref # 92144)       | 92144-1072  | 1        |
| SPRING (Ref # 92144A)                    | 92144-1886  | 1        |
| SPRING,VACUUM VALVE (Ref # 92144B)       | 92144-1947  | 1        |
| TUBE,FUEL (Ref # 92191A)                 | 92191-1261  | 1        |
| WASHER (Ref # 92200)                     | 92200-1274  | 1        |
| WASHER (Ref # 92200A)                    | 92200-1275  | 1        |
| CLAMP,HOSE (Ref # 92037A)                | 92037-1552  | 1        |
| TUBE,AIR VENT (Ref # 92191)              | 92191-1090  | 1        |