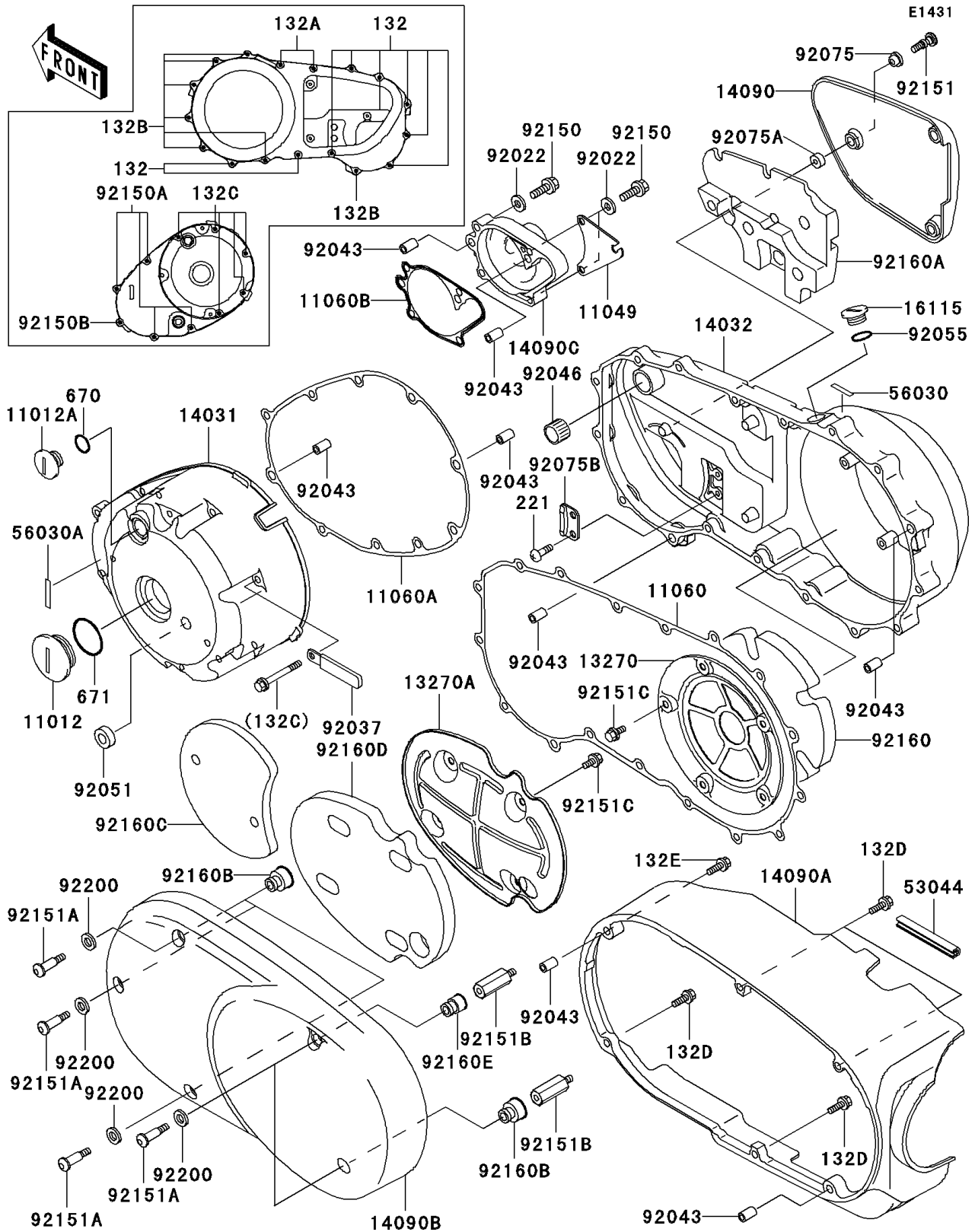


1996 Vulcan 1500 Classic PARTS DIAGRAM

Engine Cover(s)



1996 Vulcan 1500 Classic PARTS LIST

Engine Cover(s)

| ITEM NAME | PART NUMBER | QUANTITY |
|---|-------------|----------|
| CAP (Ref # 11012) | 11012-1362 | 1 |
| CAP, TOP MARK (Ref # 11012A) | 11012-1363 | 1 |
| BRACKET (Ref # 11049) | 11049-1789 | 1 |
| GASKET, CLUTCH COVER (Ref # 11060) | 11060-1121 | 1 |
| GASKET, GENERATOR (Ref # 11060A) | 11060-1122 | 1 |
| GASKET, WATER PUMP COVER (Ref # 11060B) | 11060-1124 | 1 |
| PLATE (Ref # 13270) | 13270-1592 | 1 |
| PLATE (Ref # 13270A) | 13270-1593 | 1 |
| COVER-GENERATOR (Ref # 14031) | 14031-1352 | 1 |
| COVER-CLUTCH (Ref # 14032) | 14032-1435 | 1 |
| COVER, CLUTCH OUTER (Ref # 14090) | 14090-1678 | 1 |
| COVER, LH, INNER (Ref # 14090A) | 14090-1679 | 1 |
| COVER, LH, OUTER (Ref # 14090B) | 14090-1883 | 1 |
| COVER, WATER PUMP (Ref # 14090C) | 14090-1932 | 1 |
| CAP-OIL FILLER (Ref # 16115) | 16115-1063 | 1 |
| TRIM, L=75 (Ref # 53044) | 53044-1279 | 1 |
| LABEL, OIL CAPACITY (Ref # 56030) | 56030-1184 | 1 |
| LABEL, CHANGE SHIFT (Ref # 56030A) | 56030-1193 | 1 |
| WASHER, 6.1X12X1 (Ref # 92022) | 92022-077 | 4 |
| CLAMP (Ref # 92037) | 92037-1993 | 1 |
| PIN, 6.2X8X14 (Ref # 92043) | 92043-1263 | 8 |
| BEARING-NEEDLE, HK1212 (Ref # 92046) | 92046-1163 | 1 |
| SEAL-OIL, TB13225.5 (Ref # 92051) | 92051-005 | 1 |
| RING-O, 31.5X2.6 (Ref # 92055) | 92055-049 | 1 |
| DAMPER (Ref # 92075) | 92075-1855 | 3 |
| DAMPER (Ref # 92075A) | 92075-1856 | 3 |
| DAMPER (Ref # 92075B) | 92075-1905 | 1 |
| BOLT, 6X30 (Ref # 92150) | 92150-1021 | 4 |
| BOLT, 6X25 (Ref # 92150A) | 92150-1779 | 4 |

1996 Vulcan 1500 Classic PARTS LIST

Engine Cover(s)

| ITEM NAME | PART NUMBER | QUANTITY |
|---------------------------------|-------------|----------|
| BOLT,6X35 (Ref # 92150B) | 92150-1967 | 1 |
| BOLT (Ref # 92151) | 92151-1060 | 3 |
| BOLT (Ref # 92151A) | 92151-1061 | 5 |
| BOLT (Ref # 92151B) | 92151-1062 | 2 |
| BOLT,6X10 (Ref # 92151C) | 92151-1064 | 9 |
| DAMPER (Ref # 92160) | 92160-1716 | 1 |
| DAMPER (Ref # 92160A) | 92160-1717 | 1 |
| DAMPER (Ref # 92160B) | 92160-1718 | 4 |
| DAMPER (Ref # 92160C) | 92160-1719 | 1 |
| DAMPER (Ref # 92160D) | 92160-1720 | 1 |
| DAMPER (Ref # 92160E) | 92160-1730 | 1 |
| BOLT-FLANGED-SMALL (Ref # 132) | 132E0625 | 8 |
| BOLT-FLANGED-SMALL (Ref # 132A) | 132E0630 | 2 |
| BOLT-FLANGED-SMALL (Ref # 132B) | 132E0635 | 7 |
| BOLT-FLANGED-SMALL (Ref # 132C) | 132J0665 | 5 |
| BOLT-FLANGED-SMALL (Ref # 132D) | 132V0620 | 4 |
| BOLT-FLANGED-SMALL (Ref # 132E) | 132V0630 | 2 |
| SCREW-CSK-CROS,6X12 (Ref # 221) | 221B0612 | 2 |
| O RING,18MM (Ref # 670) | 670B2018 | 1 |
| O RING,40MM (Ref # 671) | 671B2540 | 1 |
| WASHER (Ref # 92200) | 92200-1296 | 5 |