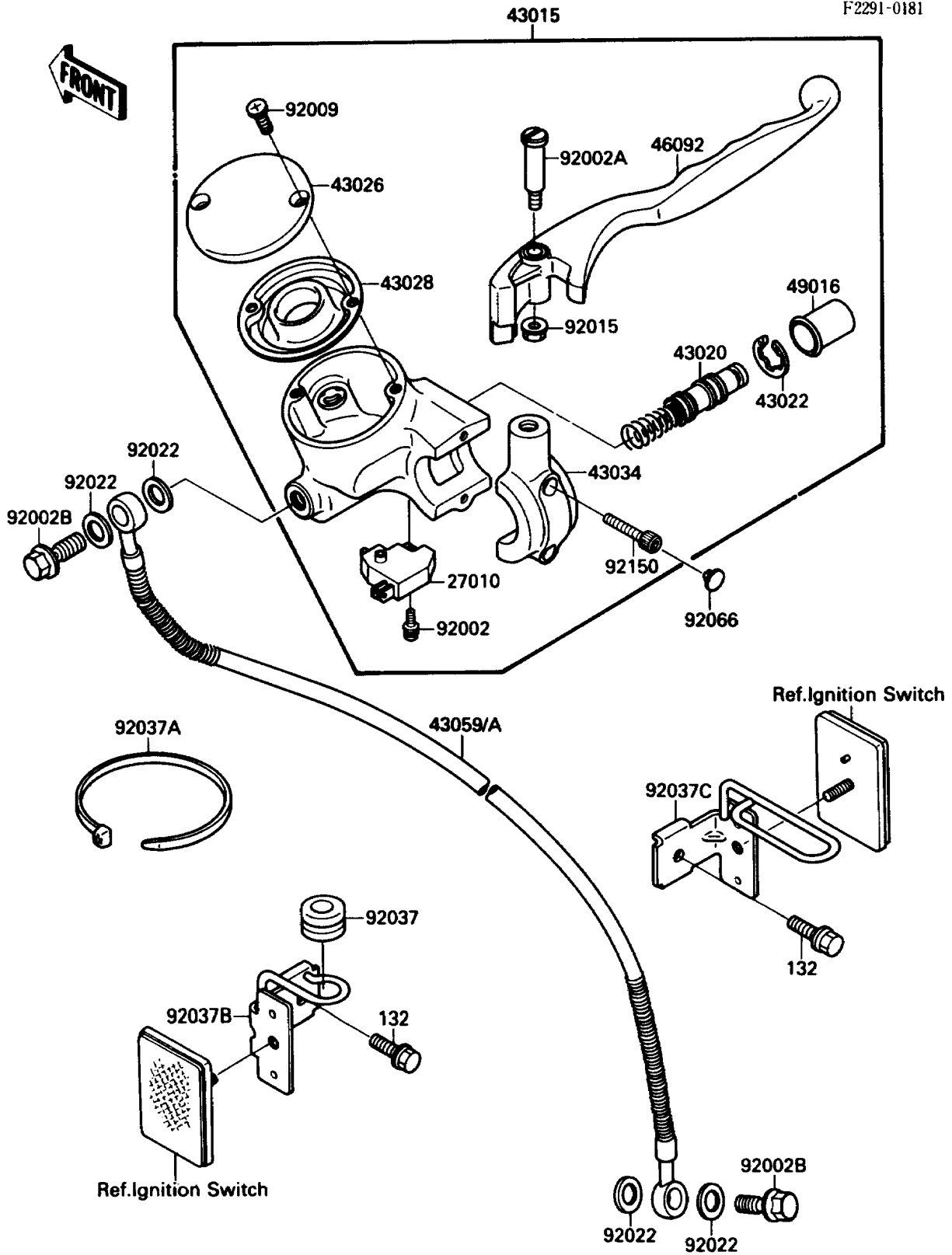


# 1989 Vulcan 88 SE PARTS DIAGRAM

## Front Master Cylinder

F2291-0181



# 1989 Vulcan 88 SE PARTS LIST

## Front Master Cylinder

ITEM NAME	PART NUMBER	QUANTITY
SWITCH,BRAKE (Ref # 27010)	27010-1170	1
CYLINDER-ASSY-MASTER,FR (Ref # 43015)	43015-1348	1
PISTON-COMP-BRAKE (Ref # 43020)	43020-1031	1
STOPPER-BRAKE,PISTON (Ref # 43022)	43022-1010	1
CAP-BRAKE (Ref # 43026)	43026-1066	1
DIAPHRAGM,MASTER CYLINDER (Ref # 43028)	43028-1071	1
HOLDER-BRAKE (Ref # 43034)	43034-1086	1
HOSE-BRAKE,FR (Ref # 43059A)	43059-1441	1
LEVER-GRIP,FRONT BRAKE (Ref # 46092)	46092-1146	1
COVER-SEAL,MASTER CYLINDER (Ref # 49016)	49016-1044	1
BOLT,SCREW,4X12 (Ref # 92002)	92002-1323	1
BOLT,LEVER SET (Ref # 92002A)	92002-1561	1
BOLT,OIL,L=23 (Ref # 92002B)	92002-1975	2
SCREW (Ref # 92009)	92009-1440	2
NUT,FLANGED,6MM (Ref # 92015)	92015-1528	1
WASHER,10.5X15X1.5 (Ref # 92022)	43067-001	4
GROMMET,HOSE CLAMP (Ref # 92037)	43064-006	1
CLAMP (Ref # 92037A)	92037-1173	2
CLAMP,HOSE (Ref # 92037B)	92037-1884	1
CLAMP,CABLE (Ref # 92037C)	92037-1885	1
PLUG (Ref # 92066)	92066-1301	2
BOLT,SOCKET,6MM (Ref # 92150)	92150-1025	2
BOLT-FLANGED-SMALL (Ref # 132)	132E0610	2