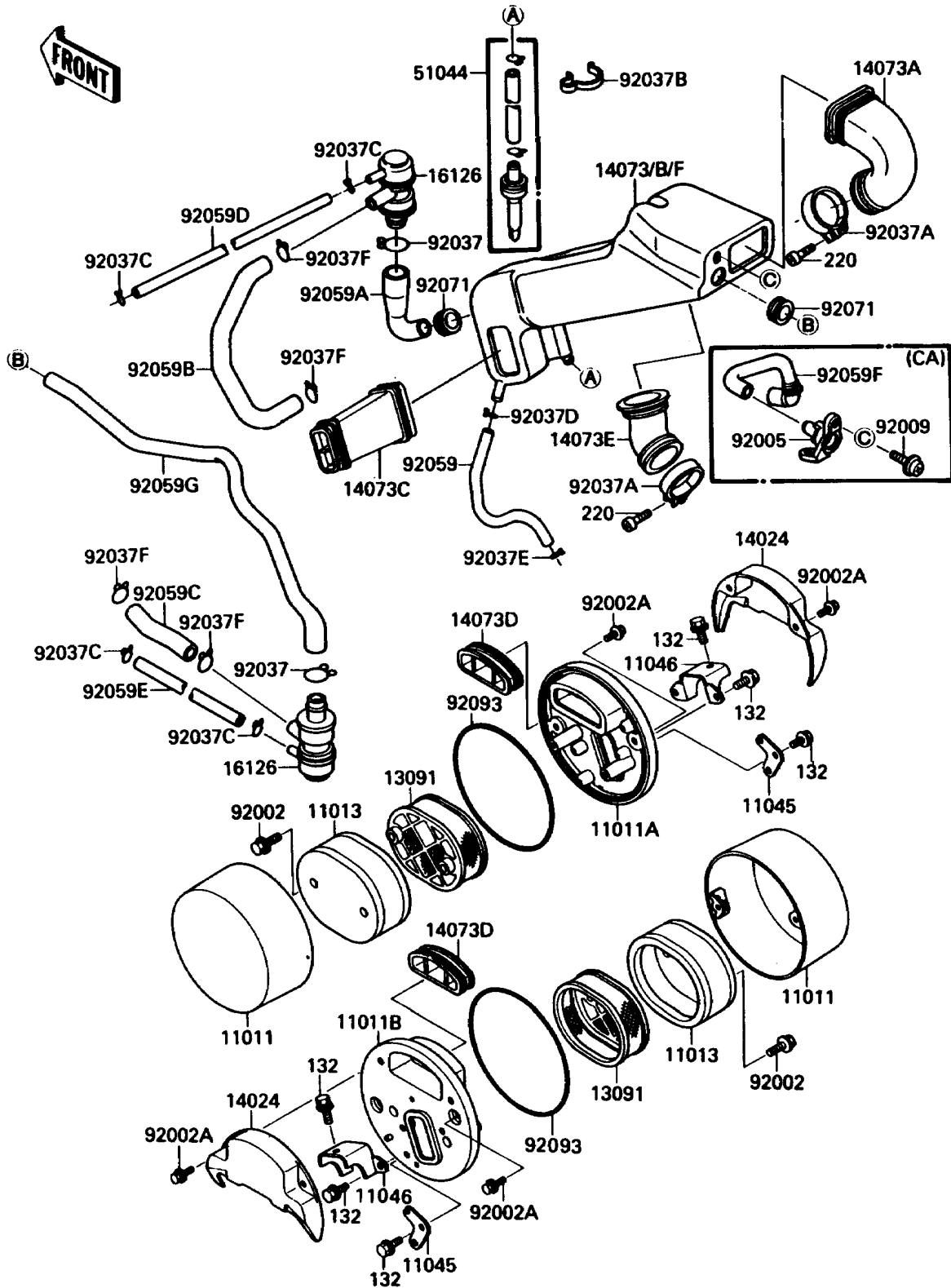


1989 Vulcan 88 SE PARTS DIAGRAM

Air Cleaner

E1130-0242



1989 Vulcan 88 SE PARTS LIST

Air Cleaner

| ITEM NAME | PART NUMBER | QUANTITY |
|--|-------------|----------|
| CASE-AIR FILTER,OUTSIDE (Ref # 11011) | 11011-1257 | 2 |
| CASE-AIR FILTER,LH,INSIDE (Ref # 11011A) | 11011-1258 | 1 |
| CASE-AIR FILTER,RH,INSIDE (Ref # 11011B) | 11011-1259 | 1 |
| ELEMENT-AIR FILTER (Ref # 11013) | 11013-1122 | 2 |
| BRACKET,AIR FILTER,LWR (Ref # 11045) | 11045-1709 | 2 |
| BRACKET,AIR FILTER,UPP (Ref # 11046) | 11046-1035 | 2 |
| HOLDER,ELEMENT (Ref # 13091) | 13091-1345 | 2 |
| COVER,AIR FILTER (Ref # 14024) | 14024-1681 | 2 |
| DUCT,FR,CARBURETOR (Ref # 14073A) | 14073-1299 | 1 |
| DUCT,AIR FILTER (Ref # 14073C) | 14073-1310 | 2 |
| DUCT,INLET (Ref # 14073D) | 14073-1319 | 2 |
| DUCT,RR,CARBURETOR (Ref # 14073E) | 14073-1326 | 1 |
| DUCT,SURGE TANK (Ref # 14073F) | 14073-1357 | 1 |
| TUBE-ASSY (Ref # 51044) | 51044-1089 | 1 |
| BOLT,6X25 (Ref # 92002) | 92002-1137 | 4 |
| BOLT,6X16 (Ref # 92002A) | 92002-1242 | 8 |
| CLAMP,BOOT FITTING (Ref # 92037A) | 92037-1112 | 2 |
| CLAMP,HOSE (Ref # 92037B) | 92037-1552 | 1 |
| CLAMP,14MM (Ref # 92037D) | 92037-1862 | 1 |
| CLAMP,BREATHER TUBE (Ref # 92037E) | 92037-192 | 1 |
| TUBE,BREATHER (Ref # 92059) | 92059-1777 | 1 |
| SEAL,AIR FILTER (Ref # 92093) | 92093-1240 | 2 |
| BOLT-FLANGED-SMALL,6X10 (Ref # 132) | 132J0610 | 10 |
| SCREW-PAN-CROS (Ref # 220) | 220C0430 | 2 |