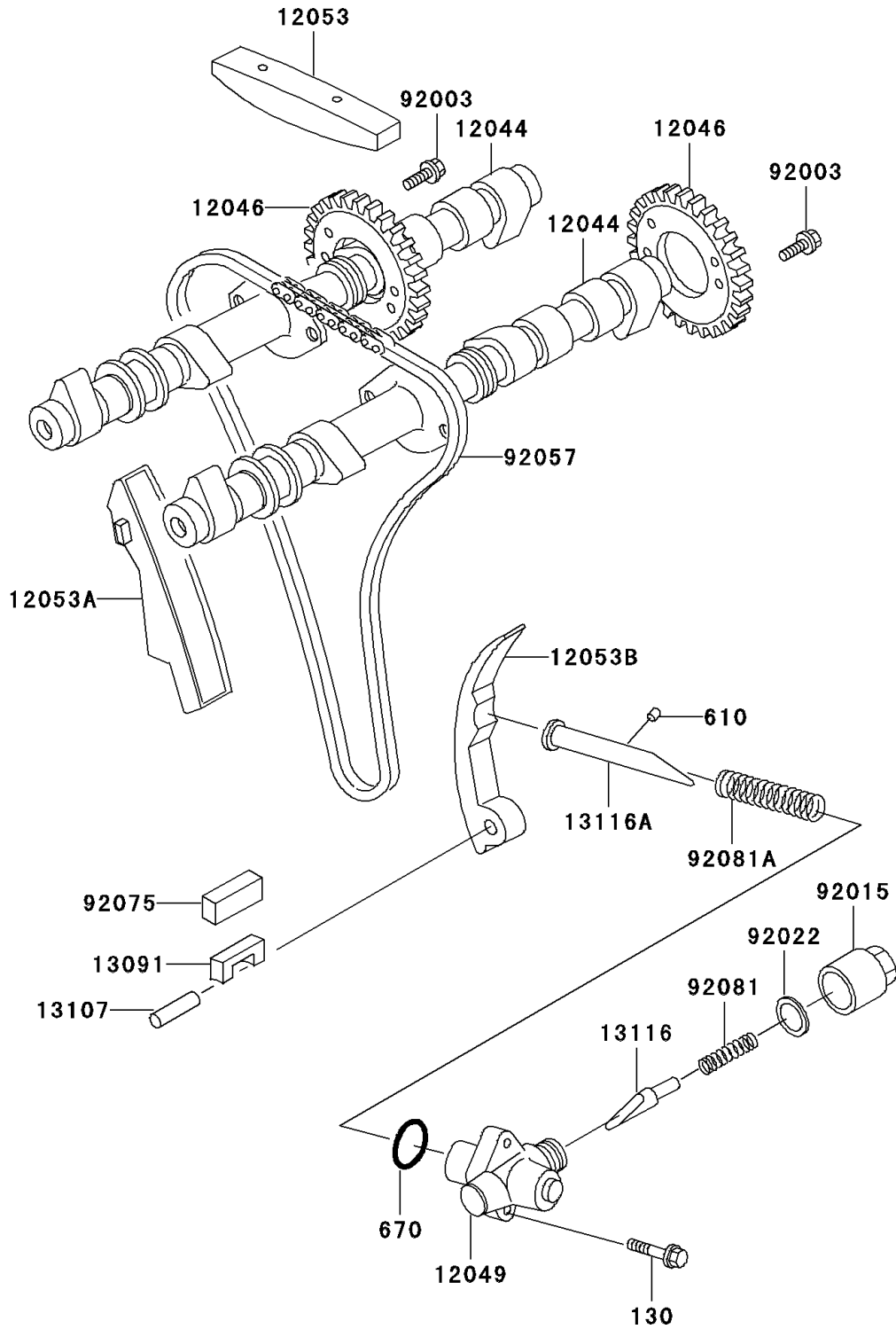


## 2001 Police 1000 PARTS DIAGRAM

Camshaft(s)/Tensioner

E1230



## 2001 Police 1000 PARTS LIST

Camshaft(s)/Tensioner

| ITEM NAME                                | PART NUMBER | QUANTITY |
|--|-------------|----------|
| BOLT-FLANGED (Ref # 130)                 | 130Y0625    | 1        |
| ROLLER,4X8 (Ref # 610)                   | 610A0408    | 1        |
| O RING,22MM (Ref # 670)                  | 670D2022    | 1        |
| CAMSHAFT-VALVE (Ref # 12044)             | 12044-1027  | 1        |
| SPROCKET,CAMSHAFT,42T (Ref # 12046)      | 12046-1025  | 1        |
| TENSIONER,CAM CHAIN (Ref # 12049)        | 12049-1009  | 1        |
| GUIDE-CHAIN,CAM,HEAD (Ref # 12053)       | 12053-1018  | 1        |
| GUIDE-CHAIN,CAM,FR (Ref # 12053A)        | 12053-1048  | 1        |
| GUIDE-CHAIN,CAM,RR (Ref # 12053B)        | 12053-1049  | 1        |
| HOLDER,CAM CHAIN GUIDE (Ref # 13091)     | 13091-1084  | 1        |
| SHAFT,8X28 (Ref # 13107)                 | 13107-1020  | 1        |
| ROD-PUSH,TENSIONER (Ref # 13116)         | 13116-1012  | 1        |
| ROD-PUSH,TENSIONER (Ref # 13116A)        | 13116-1038  | 1        |
| BOLT,FLANGED,6X11 (Ref # 92003)          | 92003-208   | 1        |
| NUT,CAP,18MM (Ref # 92015)               | 92015-1100  | 1        |
| WASHER,18.3X24X1.4 (Ref # 92022)         | 92022-1175  | 1        |
| CHAIN,CAMSHAFT,75-010X152L (Ref # 92057) | 92057-1052  | 1        |
| DAMPER,CAM CHAIN GUIDE (Ref # 92075)     | 92075-1270  | 1        |
| SPRING,TENSIONER (Ref # 92081)           | 92081-1302  | 1        |
| SPRING,TENSIONER (Ref # 92081A)          | 92081-1380  | 1        |