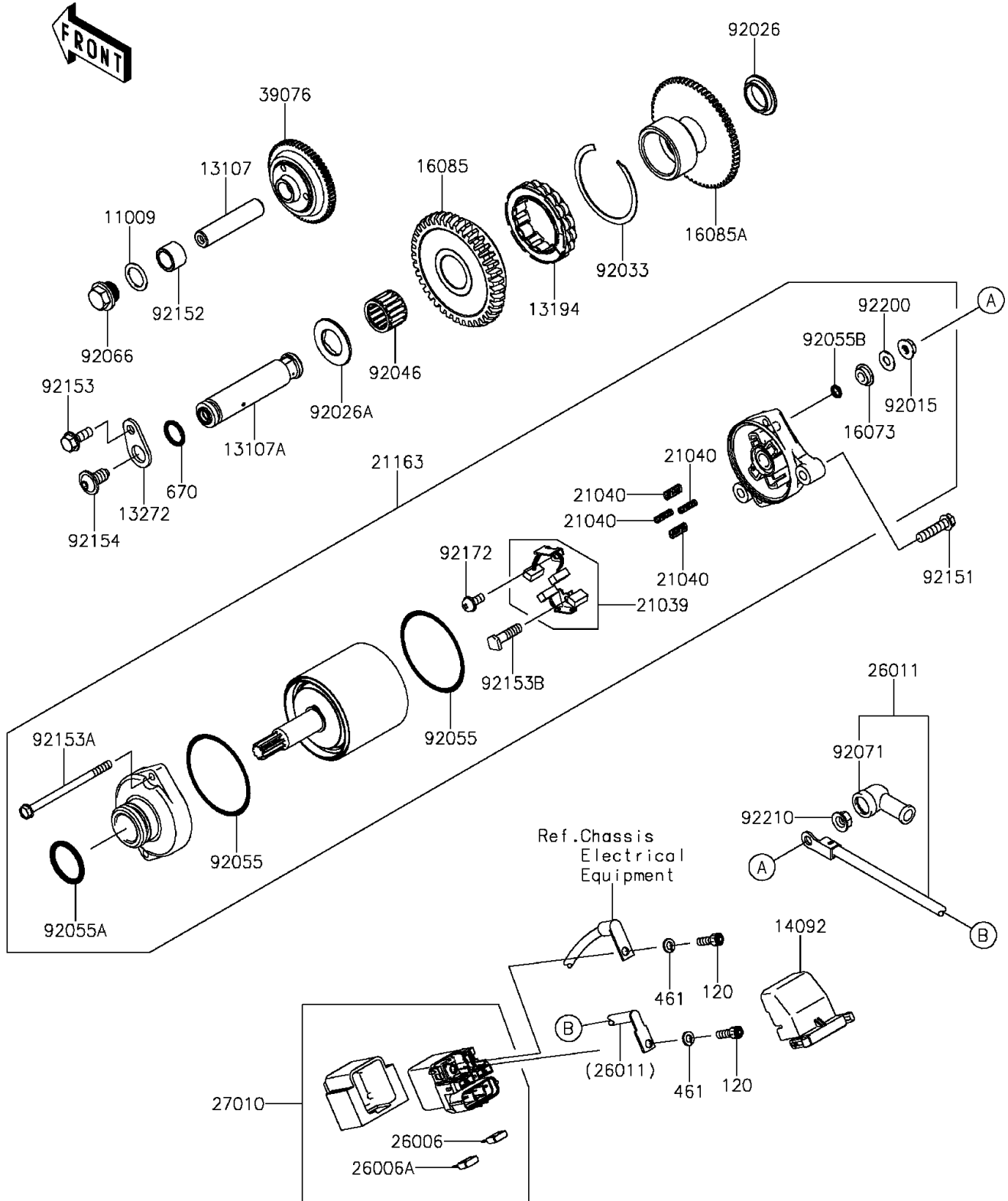


2015 Ninja® ZX™ -10R ABS 30th Anniversary Edition PARTS DIAGRA

Starter Motor

E1840



2015 Ninja® ZX™ -10R ABS 30th Anniversary Edition PARTS LIST

Starter Motor

ITEM NAME	PART NUMBER	QUANTITY
GASKET,14.3X20X1 (Ref # 11009)	11009-1238	1
SHAFT (Ref # 13107)	13107-0231	1
SHAFT,ONEWAY CLUTCH (Ref # 13107A)	13107-0233	1
CLUTCH-ONEWAY (Ref # 13194)	13194-0553	1
PLATE (Ref # 13272)	13272-0888	1
COVER (Ref # 14092)	14092-0109	1
INSULATOR (Ref # 16073)	16073-0053	1
GEAR,39T (Ref # 16085)	16085-0142	1
GEAR,62T (Ref # 16085A)	16085-0143	1
BRUSH,CARBON (Ref # 21039)	21039-0004	1
SPRING-BRUSH (Ref # 21040)	21040-0003	4
STARTER-ELECTRIC (Ref # 21163)	21163-0064	1
FUSE,MINI BLADE,15A,BLUE (Ref # 26006)	26006-0001	1
FUSE,MINI BLADE,30A,GREEN (Ref # 26006A)	26006-1080	1
WIRE-LEAD (Ref # 26011)	26011-0308	1
SWITCH (Ref # 27010)	27010-0773	1
LIMITER (Ref # 39076)	39076-0554	1
NUT,STARTER MOTOR (Ref # 92015)	92015-1476	1
SPACER,RH (Ref # 92026)	92026-0157	1
SPACER,LH (Ref # 92026A)	92026-0158	1
RING-SNAP (Ref # 92033)	92033-3731	1
BEARING-NEEDLE,FMJ-182417 (Ref # 92046)	92046-0040	1
RING-O (Ref # 92055)	92055-0136	2
RING-O (Ref # 92055A)	92055-1276	1
RING-O,4.5X2.0 (Ref # 92055B)	92055-1370	1
PLUG,14X8 (Ref # 92066)	92066-1273	1
GROMMET (Ref # 92071)	92071-0024	1
BOLT,FLANGED-SMALL,6X25 (Ref # 92151)	92151-1930	2
COLLAR,12.2X17X12 (Ref # 92152)	92152-0870	1

2015 Ninja® ZX™ -10R ABS 30th Anniversary Edition PARTS LIST

Starter Motor

ITEM NAME	PART NUMBER	QUANTITY
BOLT,FLANGED,6X16 (Ref # 92153)	92153-1551	1
BOLT (Ref # 92153A)	92153-1850	2
BOLT (Ref # 92153B)	92153-1866	1
BOLT,SOCKET,8X16 (Ref # 92154)	92154-0397	1
SCREW (Ref # 92172)	92172-0334	1
WASHER (Ref # 92200)	92200-0386	1
NUT,6MM (Ref # 92210)	92210-0188	1
BOLT-SOCKET,5X10 (Ref # 120)	120CB0510	2
WASHER-SPRING,5MM (Ref # 461)	461DB0500	2
O RING,14MM (Ref # 670)	670D2014	1