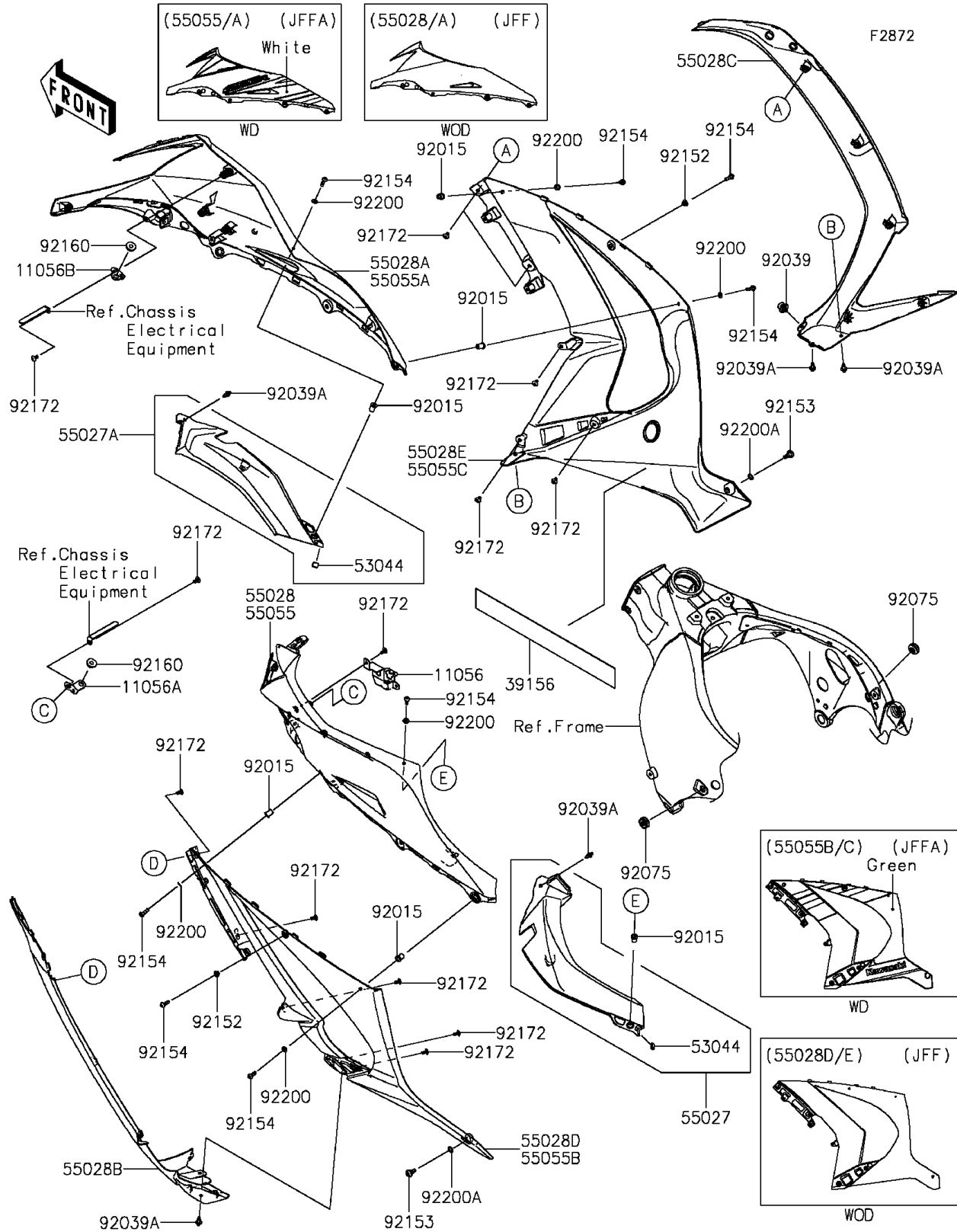


# 2015 Ninja® ZX™ -10R 30th Anniversary Edition PARTS DIAGRAM

## Cowling Lower



## 2015 Ninja® ZX™ -10R 30th Anniversary Edition PARTS LIST

### Cowling Lowers

ITEM NAME	PART NUMBER	QUANTITY
BRACKET,FUSE BOX (Ref # 11056)	11056-0457	1
BRACKET (Ref # 11056A)	11056-0709	1
BRACKET (Ref # 11056B)	11056-0710	1
PAD,49X400X0.3 (Ref # 39156)	39156-0753	1
TRIM (Ref # 53044)	53044-0552	2
COWLING-ASSY,INNER,LH,F.BLACK (Ref # 55027)	55027-0060-6Z	1
COWLING-ASSY,INNER,RH,F.BLACK (Ref # 55027A)	55027-0061-6Z	1
COWLING,SIDE,FR,LH,F.BLACK (Ref # 55028B)	55028-0336-6Z	1
COWLING,SIDE,FR,RH,F.BLACK (Ref # 55028C)	55028-0337-6Z	1
COWLING,SIDE,UPP,LH,P.S.WHITE (Ref # 55055)	55055-5490-25Y	1
COWLING,SIDE,UPP,RH,P.S.WHITE (Ref # 55055A)	55055-5491-25Y	1
COWLING,SIDE,LH,GREEN (Ref # 55055B)	55055-5492-777	1
COWLING,SIDE,RH,GREEN (Ref # 55055C)	55055-5493-777	1
NUT,WELL,5MM (Ref # 92015)	92015-1757	6
RIVET,HOLE 8MM (Ref # 92039)	92039-0014	1
RIVET (Ref # 92039A)	92039-0068	5
DAMPER (Ref # 92075)	92075-1067	2
COLLAR,5.3X7.3X5.3 (Ref # 92152)	92152-0912	2
BOLT,SOCKET,6MM (Ref # 92153)	92153-0489	2
BOLT,SOCKET,5X16 (Ref # 92154)	92154-0209	8
DAMPER (Ref # 92160)	92160-1613	2
SCREW,TAPPING,5X10 (Ref # 92172)	92172-0262	13
WASHER,NYLON,5.3X11.5X0.5 (Ref # 92200)	92200-0006	6
WASHER,10.4X15.9X0.5 (Ref # 92200A)	92200-0157	2