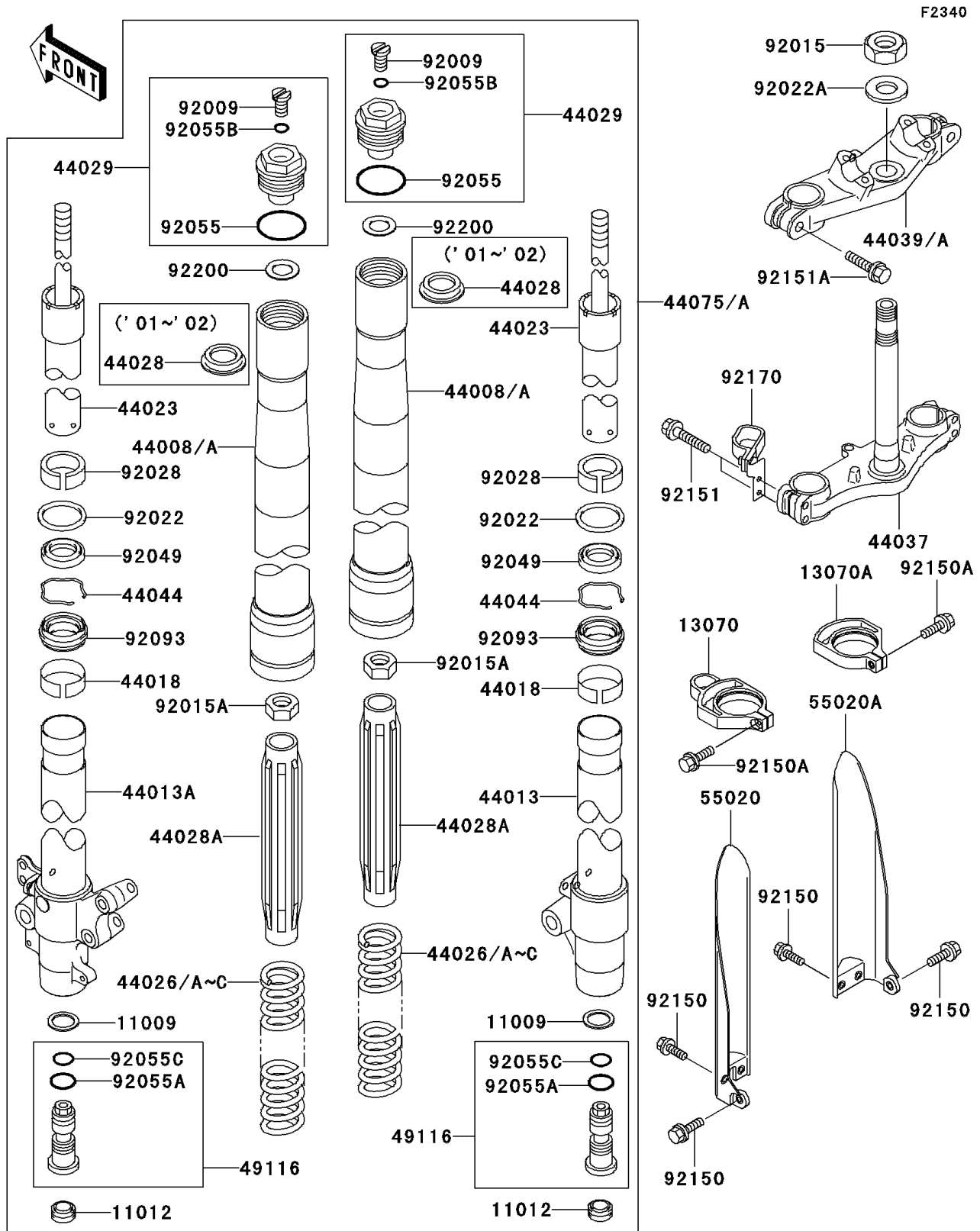


# 2003 KX85

## PARTS DIAGRAM

### Front Fork



# 2003 KX85

## PARTS LIST

### Front Fork

**Kawasaki**

Let the Good Times Roll®

ITEM NAME	PART NUMBER	QUANTITY
GASKET,FORK CYLINDER BOLT (Ref # 11009)	11009-1592	2
CAP (Ref # 11012)	11012-1692	2
GUIDE,PROTECTOR,LH,WHITE (Ref # 13070)	13070-1310-RZ	1
GUIDE,PROTECTOR,RH,WHITE (Ref # 13070A)	13070-1311-RZ	1
PIPE-FORK OUTER,BRONZE (Ref # 44008)	44008-1041-JS	2
PIPE-FORK INNER,RH (Ref # 44013)	44013-1442	1
PIPE-FORK INNER,LH (Ref # 44013A)	44013-1484	1
PISTON-FORK (Ref # 44018)	44018-1058	2
CYLINDER-SET-FORK (Ref # 44023)	44023-1119	2
SPRING-FRONT FORK,K=0.28 (Ref # 44026)	44026-1633	2
SPRING-FRONT FORK,K=0.29 (Ref # 44026A)	44026-1634	2
SPRING-FRONT FORK,K=0.30 (Ref # 44026B)	44026-1635	2
SPRING-FRONT FORK,K=0.27 (Ref # 44026C)	44026-1671	2
GUIDE-FORK SPRING (Ref # 44028A)	44028-1090	2
SEAT-FORK SPRING (Ref # 44029)	44029-1152	2
HOLDER-FORK UNDER (Ref # 44037)	44037-1360	1
HOLDER-FORK UPPER (Ref # 44039A)	44039-1294	1
RING-SNAP (Ref # 44044)	44044-015	2
DAMPER-SET-FORK,BRONZE (Ref # 44075)	44075-1130-JS	1
VALVE-ASSY,FORK (Ref # 49116)	49116-1153	2
GUARD,FORK,LH,WHITE (Ref # 55020)	55020-1611-RZ	1
GUARD,FORK,RH,WHITE (Ref # 55020A)	55020-1612-RZ	1
SCREW (Ref # 92009)	92009-1568	2
NUT,STEERING STEM,22MM (Ref # 92015)	92015-1653	1
NUT (Ref # 92015A)	92015-1839	2
WASHER,FRONT FORK (Ref # 92022)	92022-1275	2
WASHER,STEERING STEM (Ref # 92022A)	92022-1873	1
BUSHING (Ref # 92028)	92028-1656	2
SEAL-OIL,FORK OUTER TUBE (Ref # 92049)	92049-1394	2

# 2003 KX85

## PARTS LIST

### Front Fork

ITEM NAME	PART NUMBER	QUANTITY
RING-O (Ref # 92055)	92055-1123	2
RING-O (Ref # 92055A)	92055-1156	2
RING-O (Ref # 92055B)	92055-1441	2
RING-O,FORK VALVE (Ref # 92055C)	92055-1502	2
SEAL,FORK OUTER TUBE (Ref # 92093)	92093-1426	2
BOLT,6X14 (Ref # 92150)	92150-1340	6
BOLT,5X16 (Ref # 92150A)	92150-1802	2
BOLT,FLANGED,8X40 (Ref # 92151)	92151-1877	4
BOLT,FLANGED,8X35 (Ref # 92151A)	92151-1878	2
CLAMP (Ref # 92170)	92170-1810	1
WASHER (Ref # 92200)	92200-1655	2