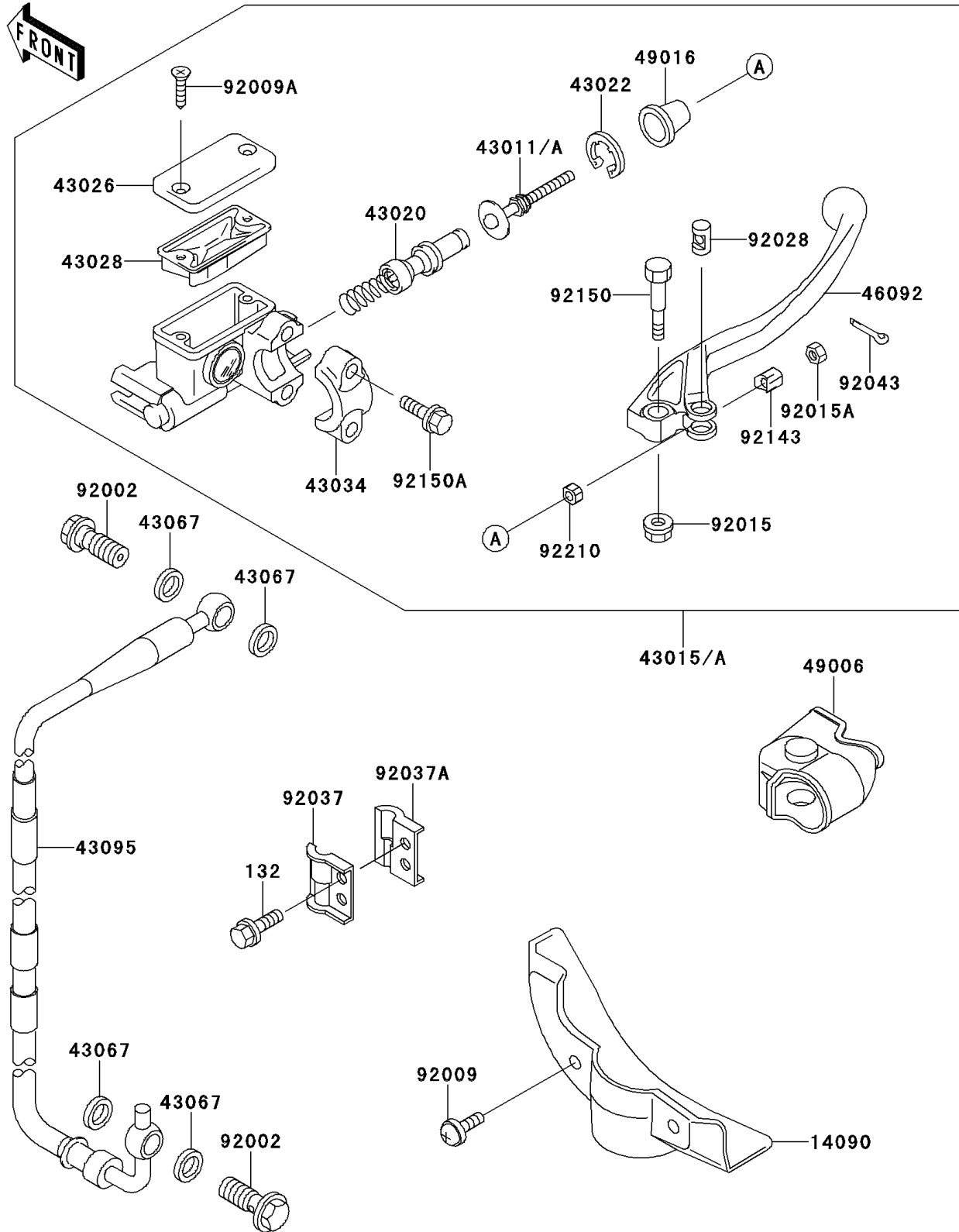


2000 KX80 PARTS DIAGRAM

Front Master Cylinder

F2291



2000 KX80 PARTS LIST

Front Master Cylinder

| ITEM NAME | PART NUMBER | QUANTITY |
|---|---------------|----------|
| BOLT-FLANGED-SMALL (Ref # 132) | 132G0616 | 2 |
| COVER,BRAKE HOSE,WHITE (Ref # 14090) | 14090-1860-RZ | 1 |
| ROD-BRAKE,FR MASTER CYLINDER (Ref # 43011A) | 43011-1181 | 1 |
| CYLINDER-ASSY-MASTER,FR (Ref # 43015A) | 43015-1657 | 1 |
| PISTON-COMP-BRAKE (Ref # 43020) | 43020-1115 | 1 |
| STOPPER-BRAKE,PISTON (Ref # 43022) | 43022-1010 | 1 |
| CAP-BRAKE (Ref # 43026) | 43026-1075 | 1 |
| DIAPHRAGM (Ref # 43028) | 43028-1067 | 1 |
| HOLDER-BRAKE (Ref # 43034) | 43034-1110 | 1 |
| WASHER,10.5X15X1.5 (Ref # 43067) | 43067-001 | 4 |
| HOSE-BRAKE,FR (Ref # 43095) | 43095-1091 | 1 |
| LEVER-GRIP,FRONT BRAKE (Ref # 46092) | 46092-1191 | 1 |
| BOOT,FRONT BRAKE LEVER (Ref # 49006) | 49006-1286 | 1 |
| COVER-SEAL,MASTER CYLINDER (Ref # 49016) | 49016-1044 | 1 |
| BOLT,OIL,L=23 (Ref # 92002) | 92002-1888 | 2 |
| SCREW,6X14,WHITE (Ref # 92009) | 92009-1287 | 2 |
| SCREW,4MM (Ref # 92009A) | 92009-1458 | 2 |
| NUT,FLANGED,6MM (Ref # 92015) | 92015-1528 | 1 |
| NUT,ADJUST (Ref # 92015A) | 92015-1642 | 1 |
| BUSHING (Ref # 92028) | 92028-1792 | 1 |
| CLAMP,BRAKE HOSE,OUTSIDE (Ref # 92037) | 92037-1362 | 1 |
| CLAMP,BRAKE HOSE,INSIDE (Ref # 92037A) | 92037-1363 | 1 |
| PIN (Ref # 92043) | 92043-1539 | 1 |
| COLLAR (Ref # 92143) | 92143-1882 | 1 |
| BOLT,LEVER SET (Ref # 92150) | 92150-1451 | 1 |
| BOLT (Ref # 92150A) | 92150-1452 | 2 |
| NUT,ADJUST (Ref # 92210) | 92210-1064 | 1 |