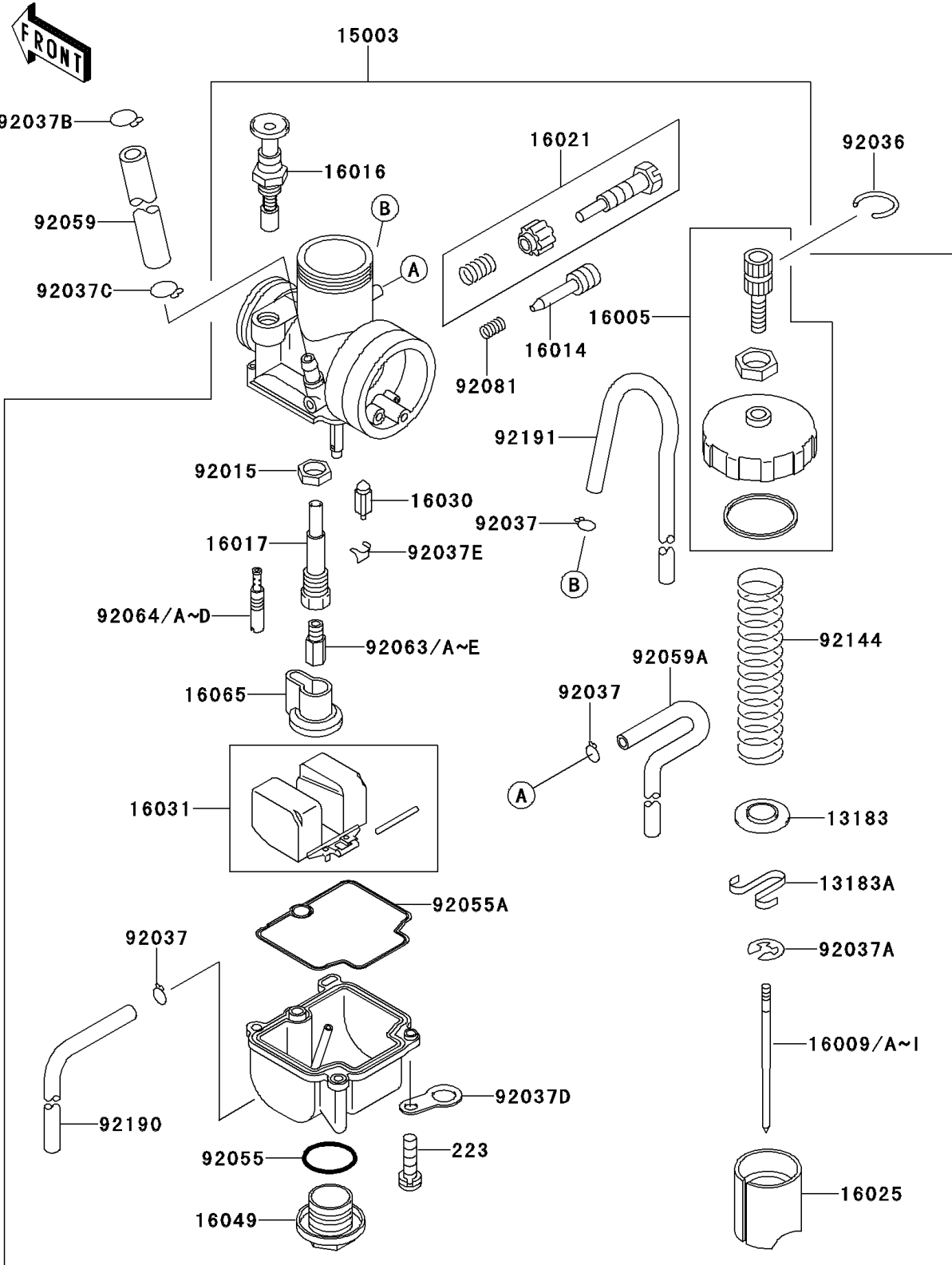


1999 KX80 PARTS DIAGRAM

Carburetor

E1611



1999 KX80 PARTS LIST

Carburetor

| ITEM NAME | PART NUMBER | QUANTITY |
|------------------------------------|-------------|----------|
| PLATE (Ref # 13183) | 13183-1162 | 1 |
| PLATE,THROTTLE (Ref # 13183A) | 13183-1250 | 1 |
| CARBURETOR-ASSY (Ref # 15003) | 15003-1336 | 1 |
| TOP-CHAMBER (Ref # 16005) | 16005-1077 | 1 |
| NEEDLE-JET,N5HG (Ref # 16009) | 16009-1953 | 1 |
| NEEDLE-JET,N5HD (Ref # 16009A) | 16009-1958 | 1 |
| NEEDLE-JET,N5HE (Ref # 16009B) | 16009-1959 | 1 |
| NEEDLE-JET,N5HF (Ref # 16009C) | 16009-1960 | 1 |
| NEEDLE-JET,N5HH (Ref # 16009D) | 16009-1961 | 1 |
| NEEDLE-JET,N5JD (Ref # 16009E) | 16009-1963 | 1 |
| NEEDLE-JET,N5JE (Ref # 16009F) | 16009-1964 | 1 |
| NEEDLE-JET,N5JF (Ref # 16009G) | 16009-1965 | 1 |
| NEEDLE-JET,N5JG (Ref # 16009H) | 16009-1966 | 1 |
| NEEDLE-JET,N5JH (Ref # 16009I) | 16009-1967 | 1 |
| SCREW-PILOT AIR (Ref # 16014) | 16014-1033 | 1 |
| PLUNGER,STARTER (Ref # 16016) | 16016-1028 | 1 |
| JET-NEEDLE (Ref # 16017) | 16017-1365 | 1 |
| SCREW-THROTTLE STOP (Ref # 16021) | 16021-1166 | 1 |
| VALVE-THROTTLE,CA3.0 (Ref # 16025) | 16025-1162 | 1 |
| VALVE-FLOAT (Ref # 16030) | 16030-1064 | 1 |
| FLOAT (Ref # 16031) | 16031-1083 | 1 |
| COVER-MAIN JET (Ref # 16049) | 16049-1051 | 1 |
| HOLDER-CARBURETOR (Ref # 16065) | 16065-1162 | 1 |
| NUT (Ref # 92015) | 92015-1674 | 1 |
| RING-SNAP (Ref # 92036) | 92036-018 | 1 |
| CLAMP,TUBE (Ref # 92037) | 92037-1396 | 3 |
| CLAMP,JET NEEDLE (Ref # 92037A) | 92037-1401 | 1 |
| CLAMP,TUBE (Ref # 92037B) | 92037-147 | 1 |
| CLAMP (Ref # 92037C) | 92037-1712 | 1 |

1999 KX80 PARTS LIST

Carburetor

| ITEM NAME | PART NUMBER | QUANTITY |
|-------------------------------------|-------------|----------|
| CLAMP,HOSE (Ref # 92037D) | 92037-1969 | 1 |
| CLAMP,FLOAT (Ref # 92037E) | 92037-1991 | 1 |
| RING-O,MAIN JET COVER (Ref # 92055) | 92055-1167 | 1 |
| SCREW-PAN-WS-CROS (Ref # 223) | 223C0416 | 2 |
| RING-O,FLOAT CHAMBER (Ref # 92055A) | 92055-1389 | 1 |
| TUBE,5X10X160 (Ref # 92059) | 92059-1826 | 1 |
| TUBE,4X7X360 (Ref # 92059A) | 92059-1941 | 1 |
| JET-MAIN,#125 (Ref # 92063) | 92063-1334 | 1 |
| JET-MAIN,#128 (Ref # 92063A) | 92063-1335 | 1 |
| JET-MAIN,#130 (Ref # 92063B) | 92063-1336 | 1 |
| JET-MAIN,#135 (Ref # 92063C) | 92063-1338 | 1 |
| JET-MAIN,#120 (Ref # 92063D) | 92063-1357 | 1 |
| JET-MAIN,#122 (Ref # 92063E) | 92063-1358 | 1 |
| JET-PILOT,#52 (Ref # 92064) | 92064-1130 | 1 |
| JET-PILOT,#55 (Ref # 92064A) | 92064-1145 | 1 |
| JET-PILOT,#58 (Ref # 92064B) | 92064-1146 | 1 |
| JET-PILOT,#60 (Ref # 92064C) | 92064-1147 | 1 |
| JET-PILOT,#62 (Ref # 92064D) | 92064-1148 | 1 |
| SPRING,ADJUST SCREW (Ref # 92081) | 92081-1555 | 1 |
| SPRING,THROTTLE VALVE (Ref # 92144) | 92144-1177 | 1 |
| TUBE,4X7X330 (Ref # 92190) | 92190-1291 | 1 |
| TUBE,4X7X560 (Ref # 92191) | 92191-1243 | 1 |