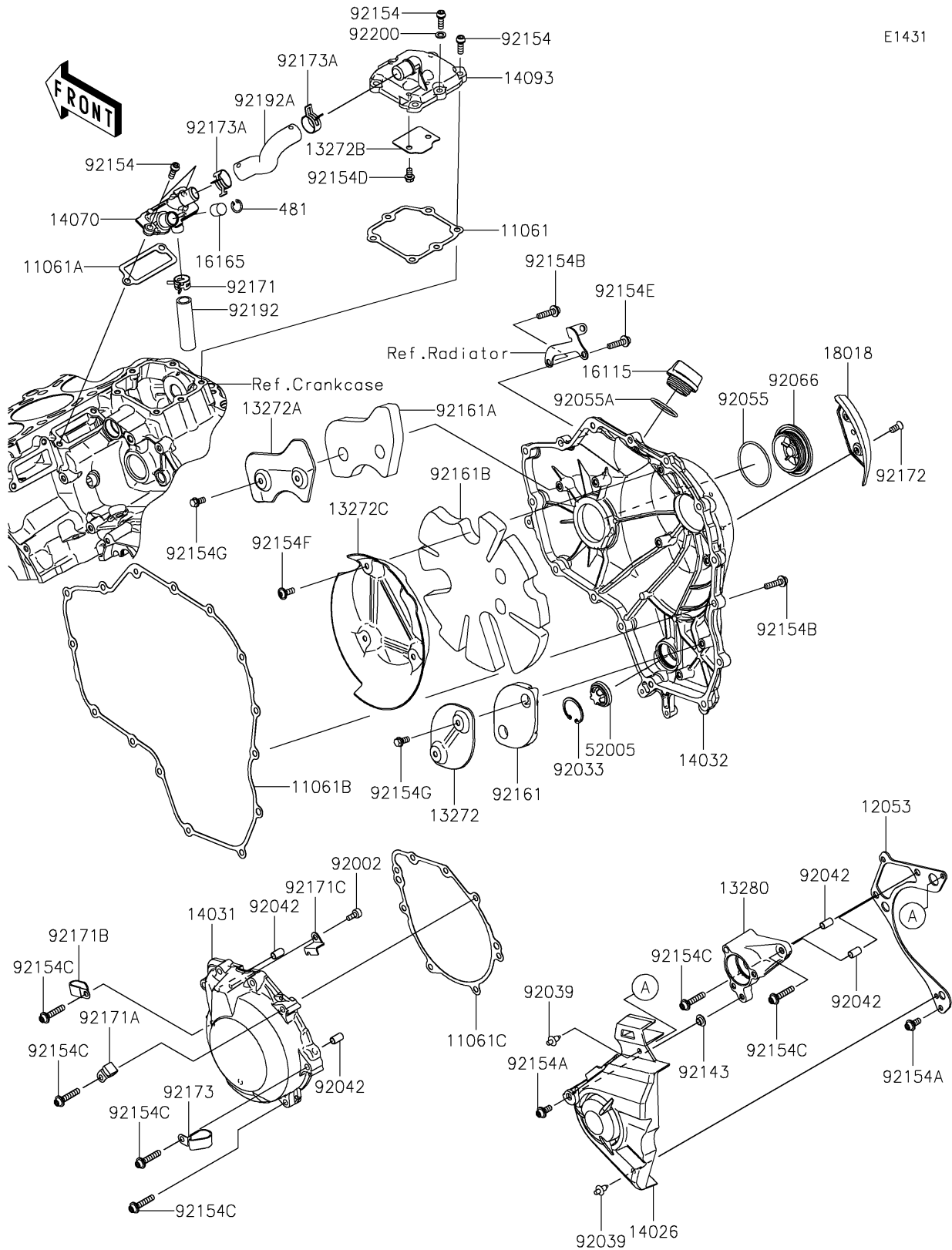


2021 Ninja H2 SX SE+ PARTS DIAGRAM

Engine Cover(s)

E1431



2021 Ninja H2 SX SE+ PARTS LIST

Engine Cover(s)

| ITEM NAME | PART NUMBER | QUANTITY |
|---------------------------------------|-------------|----------|
| GASKET,BALANCER COVER (Ref # 11061) | 11061-0941 | 1 |
| GASKET,BREATHER (Ref # 11061A) | 11061-0942 | 1 |
| GASKET,CLUTCH COVER (Ref # 11061B) | 11061-0944 | 1 |
| GASKET,GENERATOR COVER (Ref # 11061C) | 11061-0945 | 1 |
| GUIDE-CHAIN (Ref # 12053) | 12053-0247 | 1 |
| PLATE (Ref # 13272) | 13272-1852 | 1 |
| PLATE (Ref # 13272A) | 13272-1854 | 1 |
| PLATE (Ref # 13272B) | 13272-1901 | 1 |
| PLATE (Ref # 13272C) | 13272-2476 | 1 |
| HOLDER,CLUTCH RELEASE (Ref # 13280) | 13280-0903 | 1 |
| COVER-CHAIN (Ref # 14026) | 14026-0142 | 1 |
| COVER-GENERATOR (Ref # 14031) | 14031-0647 | 1 |
| COVER-CLUTCH (Ref # 14032) | 14032-0638 | 1 |
| BODY-BREATHER (Ref # 14070) | 14070-0013 | 1 |
| COVER,BALANCER (Ref # 14093) | 14093-0631 | 1 |
| CAP-OIL FILLER (Ref # 16115) | 16115-1009 | 1 |
| SEPARATOR (Ref # 16165) | 16165-0011 | 1 |
| PLATE-HEAT GUARD (Ref # 18018) | 18018-0590 | 1 |
| GAUGE (Ref # 52005) | 52005-1120 | 1 |
| BOLT,SOCKET,6X12 (Ref # 92002) | 92002-1796 | 1 |
| RING-SNAP (Ref # 92033) | 92033-1305 | 1 |
| RIVET (Ref # 92039) | 92039-0068 | 2 |
| PIN,DOWEL,6.3X8X14 (Ref # 92042) | 92042-007 | 4 |
| RING-O,49.7X2.4 (Ref # 92055) | 92055-0183 | 1 |
| RING-O,31.5X2.6 (Ref # 92055A) | 92055-049 | 1 |
| PLUG (Ref # 92066) | 92066-0800 | 1 |
| COLLAR (Ref # 92143) | 92143-1331 | 1 |
| BOLT,SOCKET,6X18 (Ref # 92154) | 92154-1455 | 8 |
| BOLT,SOCKET,6X14 (Ref # 92154A) | 92154-1460 | 2 |

2021 Ninja H2 SX SE+ PARTS LIST

Engine Cover(s)

| ITEM NAME | PART NUMBER | QUANTITY |
|---------------------------------------|-------------|----------|
| BOLT,SOCKET,6X25 (Ref # 92154B) | 92154-1461 | 14 |
| BOLT,SOCKET,6X30 (Ref # 92154C) | 92154-1463 | 10 |
| BOLT,FLANGED,6X10 (Ref # 92154D) | 92154-2819 | 2 |
| BOLT,SOCKET,6X25 (Ref # 92154E) | 92154-2826 | 1 |
| BOLT,TORX,6X16 (Ref # 92154F) | 92154-2920 | 3 |
| BOLT,FLANGED,6X12 (Ref # 92154G) | 92154-2922 | 4 |
| DAMPER (Ref # 92161) | 92161-1716 | 1 |
| DAMPER (Ref # 92161A) | 92161-1718 | 1 |
| DAMPER (Ref # 92161B) | 92161-2079 | 1 |
| CLAMP (Ref # 92171) | 92171-0533 | 1 |
| CLAMP (Ref # 92171A) | 92171-0534 | 1 |
| CLAMP (Ref # 92171B) | 92171-0739 | 1 |
| CLAMP (Ref # 92171C) | 92171-0938 | 1 |
| SCREW,TORX,6X14 (Ref # 92172) | 92172-0901 | 2 |
| CLAMP (Ref # 92173) | 92173-1549 | 1 |
| CLAMP (Ref # 92173A) | 92173-1702 | 2 |
| TUBE,BREATHER IN-SIDE (Ref # 92192) | 92192-1432 | 1 |
| TUBE,BREATHER OUT-SIDE (Ref # 92192A) | 92192-1440 | 1 |
| WASHER,6.8X11.5X1.0 (Ref # 92200) | 92200-1461 | 1 |
| CIRCLIP-TYPE-C (Ref # 481) | 481J1400 | 1 |