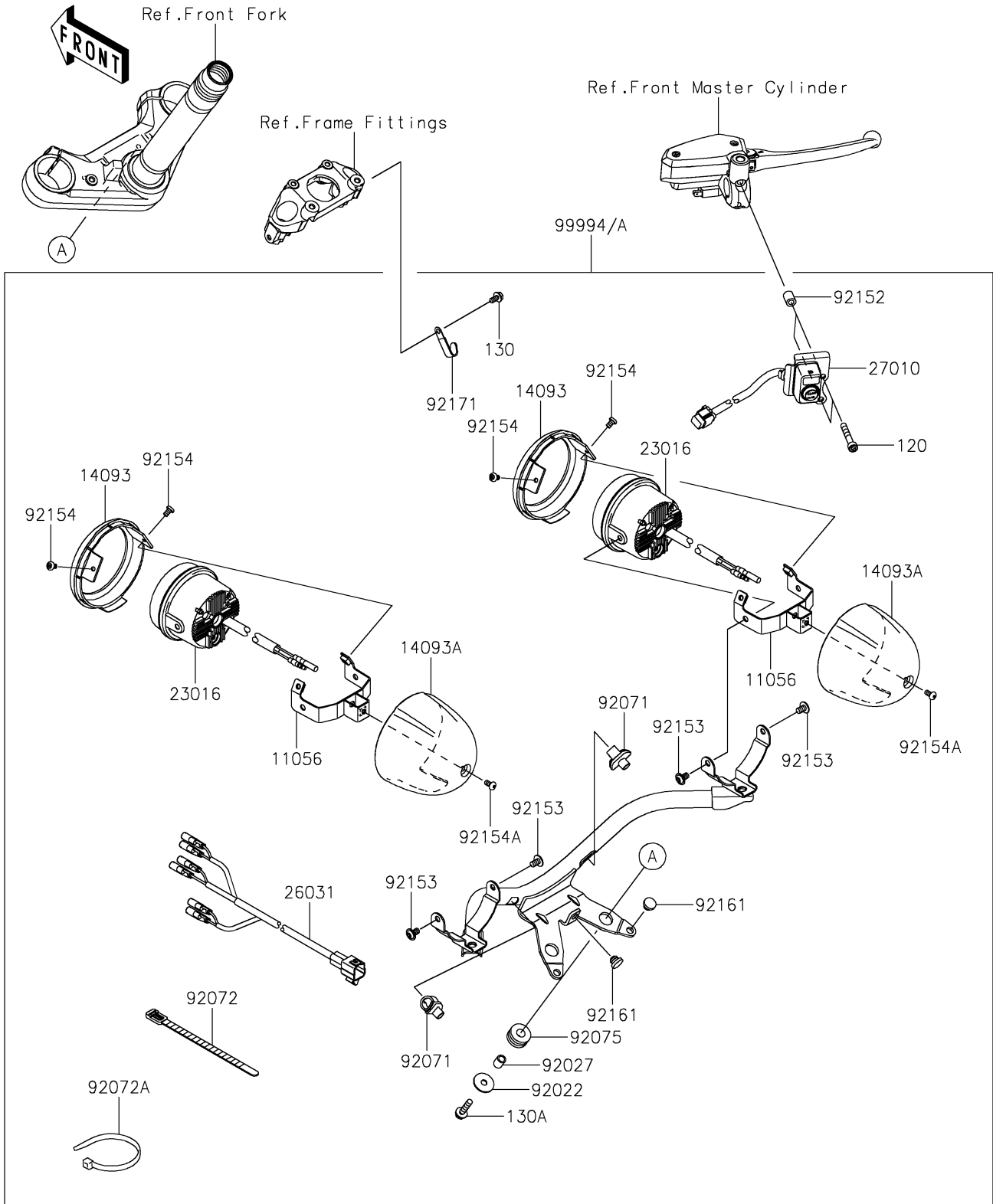


# 2022 VULCAN® S CAFE PARTS DIAGRAM

Accessory(Sub Lamp)

F2910D



## 2022 VULCAN® S CAFE PARTS LIST

### Accessory(Sub Lamp)

| ITEM NAME                                 | PART NUMBER | QUANTITY |
|---|-------------|----------|
| BRACKET,LAMP COVER (Ref # 11056)          | 11056-4446  | 2        |
| COVER,RIM (Ref # 14093)                   | 14093-0162  | 2        |
| COVER,BODY (Ref # 14093A)                 | 14093-0163  | 2        |
| LAMP-ASSY,PIAA,LP-530 (Ref # 23016)       | 23016-0576  | 2        |
| HARNESS (Ref # 26031)                     | 26031-1823  | 1        |
| SWITCH,SUB LAMP (Ref # 27010)             | 27010-0761  | 1        |
| WASHER,7X24X1.6 (Ref # 92022)             | 92022-1160  | 2        |
| COLLAR,6.8X10X12 (Ref # 92027)            | 92027-162   | 2        |
| GROMMET,SIGNAL LAMP (Ref # 92071)         | 92071-0043  | 2        |
| BAND,L=140 (Ref # 92072)                  | 92072-1293  | 2        |
| BAND,L=152 (Ref # 92072A)                 | 92072-3874  | 1        |
| DAMPER,10X24X12 (Ref # 92075)             | 92075-1690  | 2        |
| COLLAR,6.3X11X14 (Ref # 92152)            | 92152-1965  | 2        |
| BOLT,SOCKET,6X10 (Ref # 92153)            | 92153-1527  | 4        |
| BOLT (Ref # 92154)                        | 92154-0314  | 4        |
| BOLT,SOCKET,5X10 (Ref # 92154A)           | 92154-1292  | 2        |
| DAMPER (Ref # 92161)                      | 92161-1084  | 3        |
| CLAMP (Ref # 92171)                       | 92171-1539  | 1        |
| KIT-ACCESSORY,SUB-LAMP,BLK (Ref # 99994)  | 99994-0511  | 1        |
| KIT-ACCESSORY,SUB-LAMP,PLT (Ref # 99994A) | 99994-0555  | 1        |
| BOLT-SOCKET,6X40 (Ref # 120)              | 120CB0640   | 2        |
| BOLT-FLANGED,5X10 (Ref # 130)             | 130AA0510   | 1        |
| BOLT-FLANGED,6X25 (Ref # 130A)            | 130BB0625   | 2        |