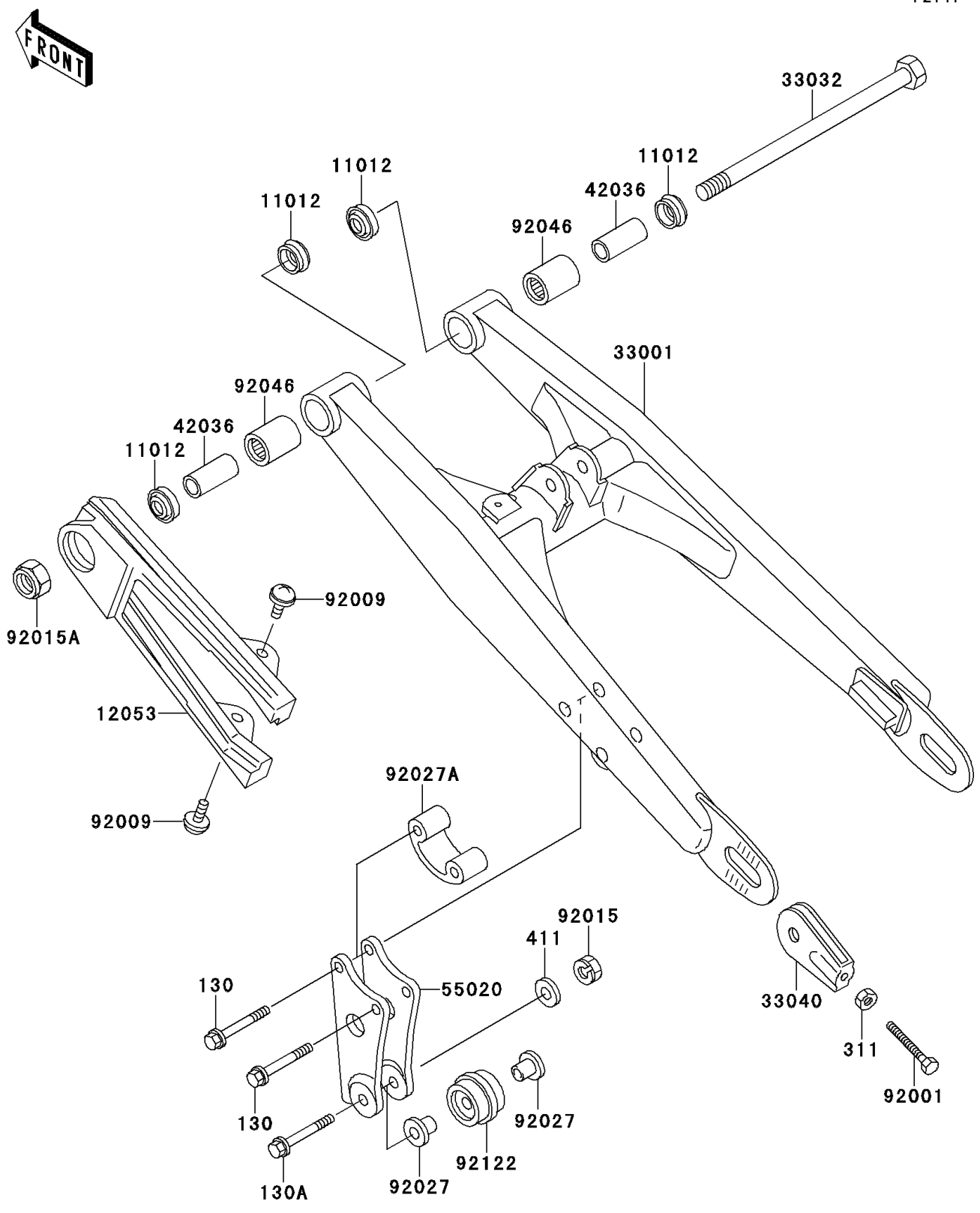


# 1992 KX60 PARTS DIAGRAM

Swing Arm

F2141



# 1992 KX60 PARTS LIST

## Swing Arm

| ITEM NAME                                 | PART NUMBER   | QUANTITY |
|---|---------------|----------|
| BOLT-FLANGED,6X45 (Ref # 130)             | 130G0645      | 2        |
| BOLT-FLANGED,6X50 (Ref # 130A)            | 130G0650      | 1        |
| NUT-HEX,6MM (Ref # 311)                   | 311B0600      | 2        |
| WASHER-PLAIN,6MM (Ref # 411)              | 411B0600      | 1        |
| CAP (Ref # 11012)                         | 11012-1263    | 4        |
| GUIDE-CHAIN,FR (Ref # 12053)              | 12053-1069    | 1        |
| ARM-COMP-SWING,SILVER NO.25 (Ref # 33001) | 33001-1307-CE | 1        |
| SHAFT-SWING ARM,PIVOT (Ref # 33032)       | 33032-1031    | 1        |
| ADJUSTER-CHAIN (Ref # 33040)              | 33040-1055    | 2        |
| SLEEVE,SWING ARM,L=34 (Ref # 42036)       | 42036-1067    | 2        |
| GUARD,CHAIN,RR (Ref # 55020)              | 55020-1163    | 1        |
| BOLT,6X39 (Ref # 92001)                   | 92001-1463    | 2        |
| SCREW,6X10,WHITE (Ref # 92009)            | 92009-1286    | 2        |
| NUT,LOCK,6MM (Ref # 92015)                | 92015-1393    | 1        |
| NUT,LOCK,12MM (Ref # 92015A)              | 92015-1774    | 1        |
| COLLAR (Ref # 92027)                      | 92027-1183    | 2        |
| COLLAR,CHAIN GUIDE (Ref # 92027A)         | 92027-1495    | 1        |
| BEARING-NEEDLE (Ref # 92046)              | 92046-1046    | 2        |
| ROLLER,CHAIN GUIDE (Ref # 92122)          | 92122-1030    | 1        |