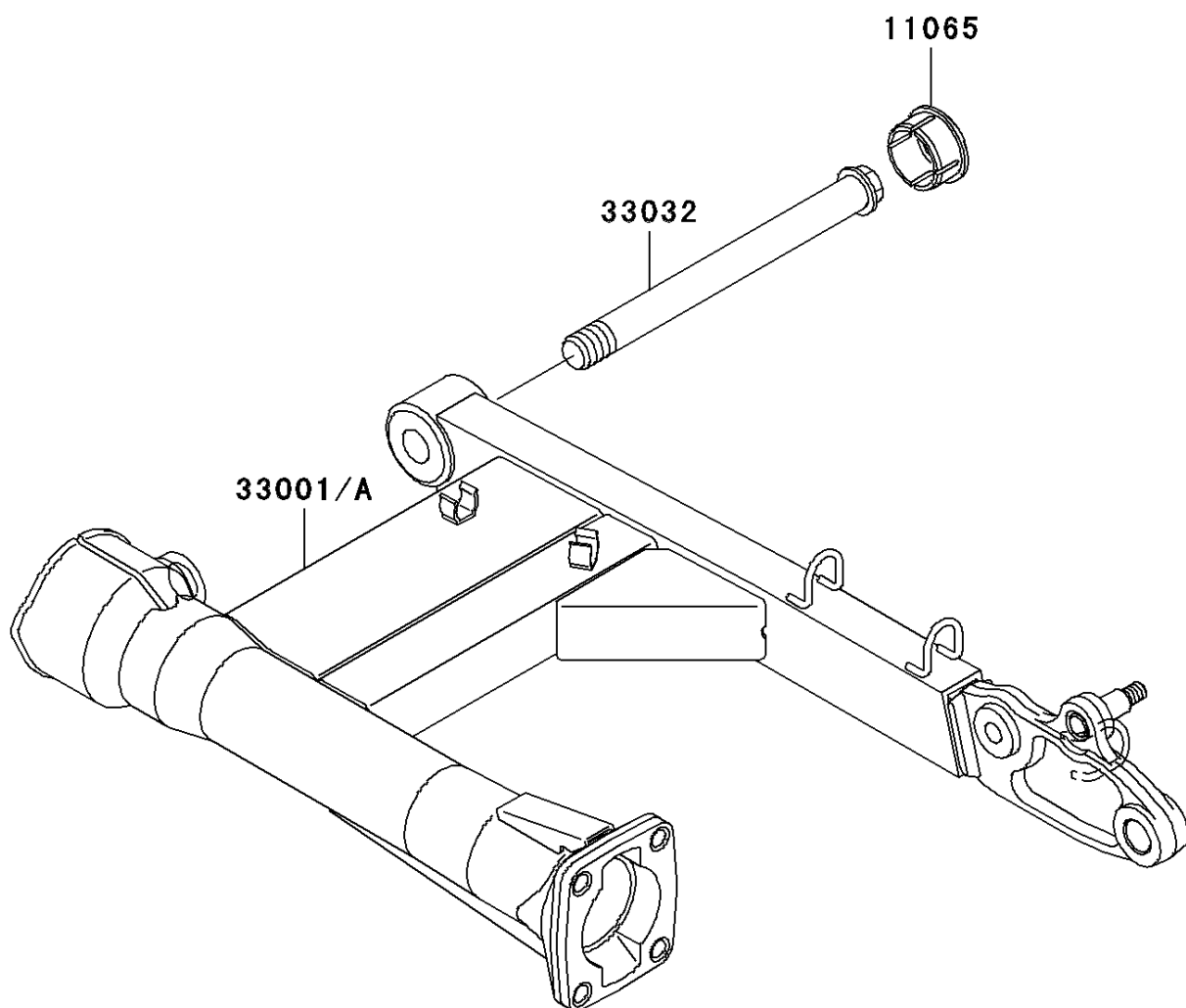


## 2008 Vulcan® 1600 Nomad™ PARTS DIAGRAM

Swingarm

F2141



## 2008 Vulcan® 1600 Nomad™ PARTS LIST

Swingarm

| ITEM NAME                     | PART NUMBER | QUANTITY |
|-------------------------------|-------------|----------|
| CAP,SWING ARM (Ref # 11065)   | 11065-1259  | 1        |
| ARM-COMP-SWING (Ref # 33001A) | 33001-0143  | 1        |
| SHAFT-SWING ARM (Ref # 33032) | 33032-1181  | 1        |