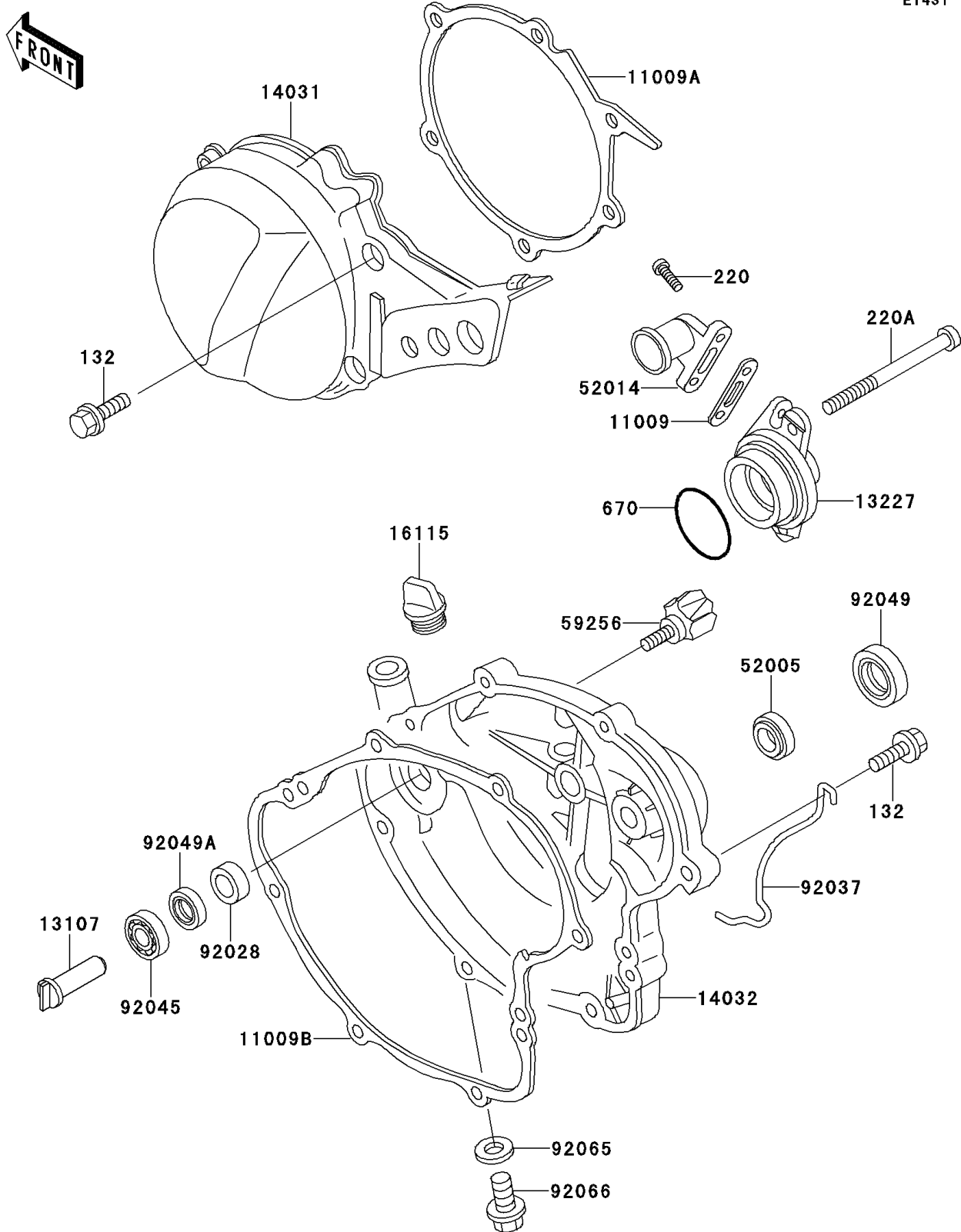


1998 KX60 PARTS DIAGRAM

Engine Cover(s)

E1431



1998 KX60 PARTS LIST

Engine Cover(s)

| ITEM NAME | PART NUMBER | QUANTITY |
|---|-------------|----------|
| BOLT-FLANGED-SMALL (Ref # 132) | 132G0625 | 1 |
| SCREW-PAN-CROS (Ref # 220) | 220B0520 | 1 |
| SCREW-PAN-CROS,6X75 (Ref # 220A) | 220B0675 | 1 |
| O RING,39MM (Ref # 670) | 670B3039 | 1 |
| GASKET,ELBOW (Ref # 11009) | 11009-1952 | 1 |
| GASKET,GENERATOR COVER (Ref # 11009A) | 11009-1974 | 1 |
| GASKET,CLUTCH COVER (Ref # 11009B) | 11009-1976 | 1 |
| SHAFT,WATER PUMP (Ref # 13107) | 13107-1123 | 1 |
| HOUSING,WATER PUMP (Ref # 13227) | 13227-1069 | 1 |
| COVER-GENERATOR (Ref # 14031) | 14031-1215 | 1 |
| COVER-CLUTCH (Ref # 14032) | 14032-1246 | 1 |
| CAP-OIL FILLER (Ref # 16115) | 16115-018 | 1 |
| GAUGE,OIL LEVEL (Ref # 52005) | 52005-1055 | 1 |
| ELBOW (Ref # 52014) | 52014-1067 | 1 |
| IMPELLER,WATER PUMP (Ref # 59256) | 59256-1052 | 1 |
| BUSHING (Ref # 92028) | 92028-1317 | 1 |
| CLAMP,TUBE (Ref # 92037) | 92037-1236 | 1 |
| BEARING-BALL,608MC3 (Ref # 92045) | 92045-1305 | 1 |
| SEAL-OIL,SB16244 (Ref # 92049) | 92049-002 | 1 |
| SEAL-OIL,MHSD8X18X10J-1 (Ref # 92049A) | 92049-1366 | 1 |
| GASKET,10.5X16X1,DRAIN PLUG (Ref # 92065) | 92065-058 | 1 |
| PLUG,DRAIN (Ref # 92066) | 92066-1241 | 1 |