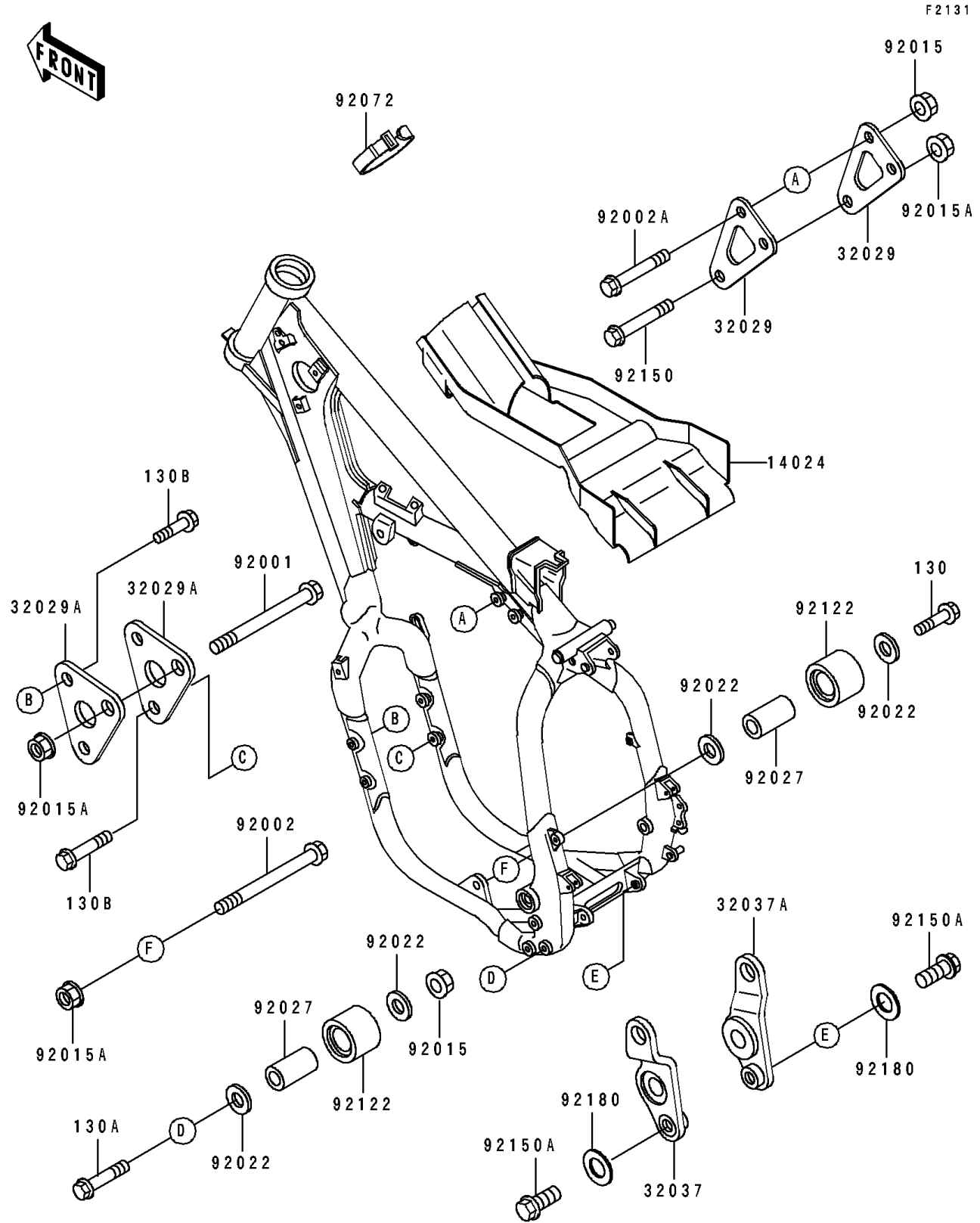


1997 KX500 PARTS DIAGRAM

Frame Fittings



1997 KX500 PARTS LIST

Frame Fittings

| ITEM NAME | PART NUMBER | QUANTITY |
|---|-------------|----------|
| COVER,AIR FILTER (Ref # 14024) | 14024-1561 | 1 |
| BRACKET-ENGINE (Ref # 32029) | 32029-1639 | 2 |
| BRACKET-ENGINE (Ref # 32029A) | 32029-1652 | 2 |
| BRACKET-SHOCKABSORBER,LH (Ref # 32037) | 32037-1532 | 1 |
| BRACKET-SHOCKABSORBER,RH (Ref # 32037A) | 32037-1533 | 1 |
| BOLT,FLANGED,10X92 (Ref # 92001) | 92001-1701 | 1 |
| BOLT,FLANGED,10X105 (Ref # 92002) | 92002-1491 | 1 |
| BOLT,FLANGED,8X47 (Ref # 92002A) | 92002-1850 | 2 |
| NUT,8MM (Ref # 92015) | 92015-1143 | 3 |
| NUT,FLANGED,10MM (Ref # 92015A) | 92015-1502 | 3 |
| WASHER,8.5X22X1.5 (Ref # 92022) | 92022-1629 | 4 |
| COLLAR,CHAIN ROLLER (Ref # 92027) | 92027-1670 | 2 |
| BAND,L=218 (Ref # 92072) | 92072-032 | 1 |
| ROLLER,CHAIN GUIDE (Ref # 92122) | 92122-1153 | 2 |
| BOLT,FLANGED,10X50 (Ref # 92150) | 92150-1125 | 1 |
| BOLT,FLANGED,12X27 (Ref # 92150A) | 92150-1359 | 2 |
| SHIM,12.5X24X0.5 (Ref # 92180) | 92180-1060 | 2 |
| BOLT-FLANGED,8X40 (Ref # 130) | 130G0840 | 1 |
| BOLT-FLANGED,8X70 (Ref # 130A) | 130G0870 | 1 |
| BOLT-FLANGED (Ref # 130B) | 130P0825 | 4 |