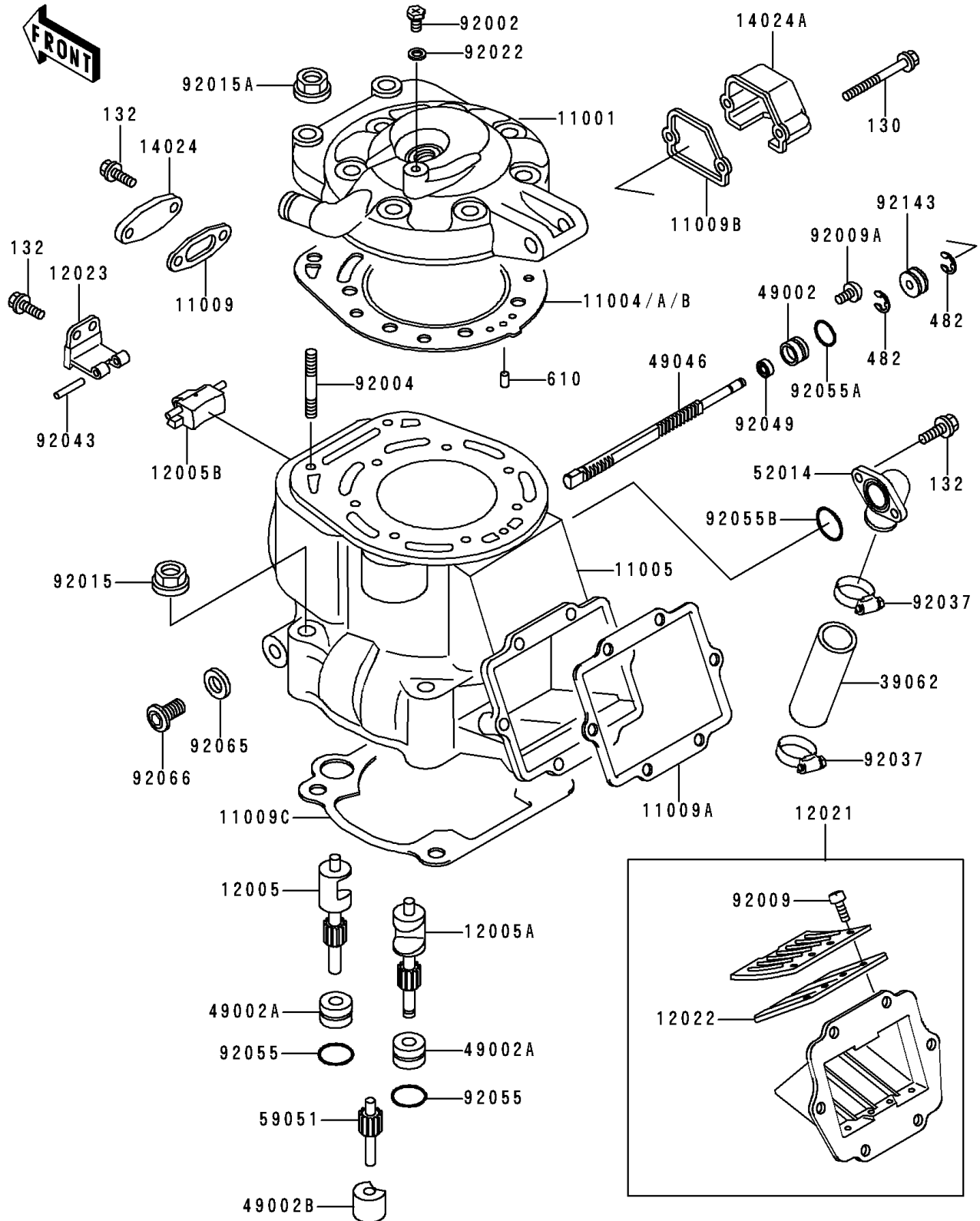


# 1995 KX500 PARTS DIAGRAM

Cylinder Head/Cylinder

E1110



# 1995 KX500 PARTS LIST

## Cylinder Head/Cylinder

| ITEM NAME                              | PART NUMBER | QUANTITY |
|--|-------------|----------|
| HEAD-CYLINDER (Ref # 11001)            | 11001-1288  | 1        |
| GASKET-HEAD,STEEL,T=0.2 (Ref # 11004)  | 11004-1187  | 1        |
| GASKET-HEAD,STEEL,T=0.4 (Ref # 11004A) | 11004-1209  | 1        |
| GASKET-HEAD,T=1.0 (Ref # 11004B)       | 11004-1276  | 1        |
| CYLINDER-ENGINE (Ref # 11005)          | 11005-1564  | 1        |
| GASKET,VALVE COVER (Ref # 11009)       | 11009-1948  | 1        |
| GASKET,REED VALVE (Ref # 11009A)       | 11009-1950  | 1        |
| GASKET,GOVERNOR COVER (Ref # 11009B)   | 11009-1960  | 1        |
| GASKET,CYLINDER BASE (Ref # 11009C)    | 11009-1961  | 1        |
| VALVE-EXHAUST,LH (Ref # 12005)         | 12005-1109  | 1        |
| VALVE-EXHAUST,RH (Ref # 12005A)        | 12005-1110  | 1        |
| VALVE-EXHAUST,CENTER (Ref # 12005B)    | 12005-1111  | 1        |
| VALVE-ASSY-REED (Ref # 12021)          | 12021-1070  | 1        |
| VALVE-REED (Ref # 12022)               | 12022-1017  | 2        |
| HOLDER-VALVE,CENTER (Ref # 12023)      | 12023-1058  | 1        |
| COVER,CENTER VALVE (Ref # 14024)       | 14024-1588  | 1        |
| COVER,GOVERNOR (Ref # 14024A)          | 14024-1611  | 1        |
| HOSE-COOLING,19X25X75 (Ref # 39062)    | 39062-1137  | 1        |
| GUIDE-VALVE,ROD (Ref # 49002)          | 49002-1062  | 1        |
| GUIDE-VALVE (Ref # 49002A)             | 49002-1093  | 2        |
| GUIDE-VALVE,IDLE GEAR (Ref # 49002B)   | 49002-1094  | 1        |
| ROD-GOVERNOR (Ref # 49046)             | 49046-1064  | 1        |
| ELBOW (Ref # 52014)                    | 52014-1065  | 1        |
| GEAR-SPUR,IDLE (Ref # 59051)           | 59051-1205  | 1        |
| BOLT,6X10 (Ref # 92002)                | 92002-1222  | 1        |
| STUD,8X35 (Ref # 92004)                | 92004-1009  | 9        |
| SCREW,3X6 (Ref # 92009)                | 92009-1371  | 8        |
| SCREW,5X10 (Ref # 92009A)              | 92009-1502  | 1        |
| NUT,FLANGED,10MM (Ref # 92015)         | 92015-077   | 4        |

# 1995 KX500 PARTS LIST

## Cylinder Head/Cylinder

| ITEM NAME                                 | PART NUMBER | QUANTITY |
|---|-------------|----------|
| NUT,8MM (Ref # 92015A)                    | 92015-1143  | 9        |
| WASHER,6.2X11X1 (Ref # 92022)             | 92022-304   | 1        |
| CLAMP,COOLING HOSE (Ref # 92037)          | 92037-1589  | 2        |
| PIN,4X23.8 (Ref # 92043)                  | 92043-1373  | 1        |
| SEAL-OIL,RSO-5.5X11X4 (Ref # 92049)       | 92049-1206  | 1        |
| RING-O,17.5X1.5 (Ref # 92055)             | 92055-022   | 2        |
| RING-O (Ref # 92055A)                     | 92055-025   | 1        |
| RING-O,19.5X1.5 (Ref # 92055B)            | 92055-055   | 1        |
| GASKET,12.5X18X1,DRAIN PLUG (Ref # 92065) | 92065-073   | 1        |
| BOLT-FLANGED (Ref # 130)                  | 130G0535    | 2        |
| BOLT-FLANGED-SMALL (Ref # 132)            | 132G0616    | 6        |
| CIRCLIP-TYPE-E,4MM (Ref # 482)            | 482J4000    | 2        |
| ROLLER,4X8 (Ref # 610)                    | 610A0408    | 1        |
| PLUG,12X10 (Ref # 92066)                  | 92066-1222  | 1        |
| COLLAR (Ref # 92143)                      | 92143-1056  | 1        |