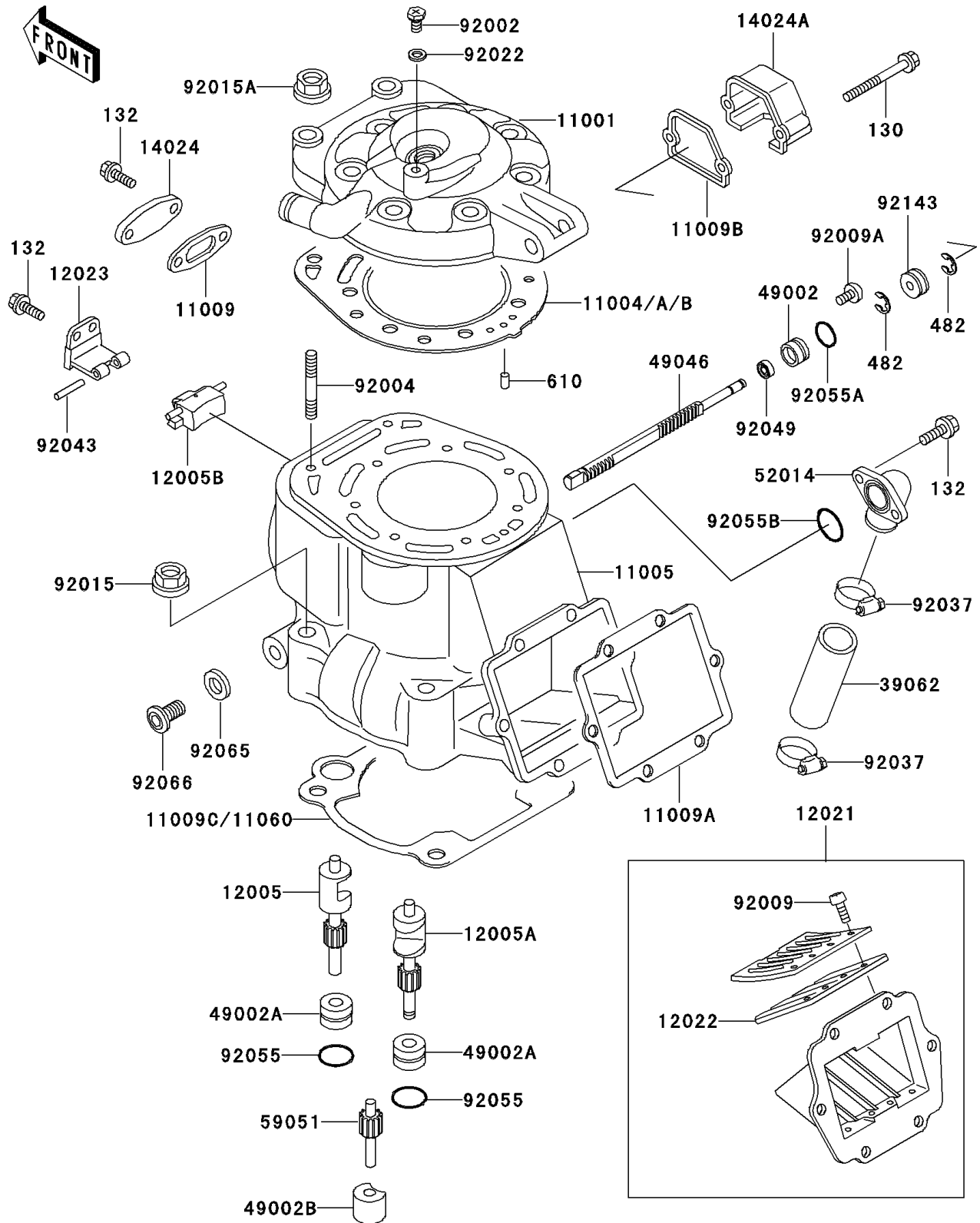


1999 KX500 PARTS DIAGRAM

Cylinder Head/Cylinder

E1110



1999 KX500 PARTS LIST

Cylinder Head/Cylinder

| ITEM NAME | PART NUMBER | QUANTITY |
|--|-------------|----------|
| HEAD-CYLINDER (Ref # 11001) | 11001-1288 | 1 |
| GASKET-HEAD,STEEL,T=0.2 (Ref # 11004) | 11004-1187 | 1 |
| GASKET-HEAD,STEEL,T=0.4 (Ref # 11004A) | 11004-1209 | 1 |
| GASKET-HEAD,T=1.0 (Ref # 11004B) | 11004-1276 | 1 |
| CYLINDER-ENGINE (Ref # 11005) | 11005-1564 | 1 |
| GASKET,VALVE COVER (Ref # 11009) | 11009-1948 | 1 |
| GASKET,REED VALVE (Ref # 11009A) | 11009-1950 | 1 |
| GASKET,GOVERNOR COVER (Ref # 11009B) | 11009-1960 | 1 |
| GASKET,CYLINDER BASE (Ref # 11060) | 11060-1874 | 1 |
| VALVE-EXHAUST,LH (Ref # 12005) | 12005-1109 | 1 |
| VALVE-EXHAUST,RH (Ref # 12005A) | 12005-1110 | 1 |
| VALVE-EXHAUST,CENTER (Ref # 12005B) | 12005-1111 | 1 |
| VALVE-ASSY-REED (Ref # 12021) | 12021-1070 | 1 |
| VALVE-REED (Ref # 12022) | 12022-1017 | 1 |
| HOLDER-VALVE,CENTER (Ref # 12023) | 12023-1058 | 1 |
| COVER,CENTER VALVE (Ref # 14024) | 14024-1588 | 1 |
| COVER,GOVERNOR (Ref # 14024A) | 14024-1611 | 1 |
| HOSE-COOLING,19X25X75 (Ref # 39062) | 39062-1137 | 1 |
| GUIDE-VALVE,ROD (Ref # 49002) | 49002-1062 | 1 |
| GUIDE-VALVE (Ref # 49002A) | 49002-1093 | 1 |
| GUIDE-VALVE,IDLE GEAR (Ref # 49002B) | 49002-1094 | 1 |
| ROD-GOVERNOR (Ref # 49046) | 49046-1064 | 1 |
| ELBOW (Ref # 52014) | 52014-1084 | 1 |
| GEAR-SPUR,IDLE (Ref # 59051) | 59051-1205 | 1 |
| BOLT,6X10 (Ref # 92002) | 92002-1222 | 1 |
| STUD,8X35 (Ref # 92004) | 92004-1009 | 1 |
| SCREW,3X6 (Ref # 92009) | 92009-1371 | 1 |
| SCREW,5X10 (Ref # 92009A) | 92009-1502 | 1 |
| NUT,FLANGED,10MM (Ref # 92015) | 92015-077 | 1 |

1999 KX500 PARTS LIST

Cylinder Head/Cylinder

| ITEM NAME | PART NUMBER | QUANTITY |
|---|-------------|----------|
| NUT,8MM (Ref # 92015A) | 92015-1143 | 1 |
| WASHER,6.2X11X1 (Ref # 92022) | 92022-304 | 1 |
| CLAMP,COOLING HOSE (Ref # 92037) | 92037-1589 | 1 |
| PIN,4X23.8 (Ref # 92043) | 92043-1373 | 1 |
| SEAL-OIL,RSO-5.5X11X4 (Ref # 92049) | 92049-1206 | 1 |
| RING-O,17.5X1.5 (Ref # 92055) | 92055-022 | 1 |
| RING-O (Ref # 92055A) | 92055-025 | 1 |
| RING-O,19.5X1.5 (Ref # 92055B) | 92055-055 | 1 |
| BOLT-FLANGED (Ref # 130) | 130G0535 | 1 |
| BOLT-FLANGED-SMALL (Ref # 132) | 132G0616 | 1 |
| CIRCLIP-TYPE-E,4MM (Ref # 482) | 482J4000 | 1 |
| ROLLER,4X8 (Ref # 610) | 610A0408 | 1 |
| GASKET,12.5X18X1,DRAIN PLUG (Ref # 92065) | 92065-073 | 1 |
| PLUG,12X10 (Ref # 92066) | 92066-1222 | 1 |
| COLLAR (Ref # 92143) | 92143-1056 | 1 |