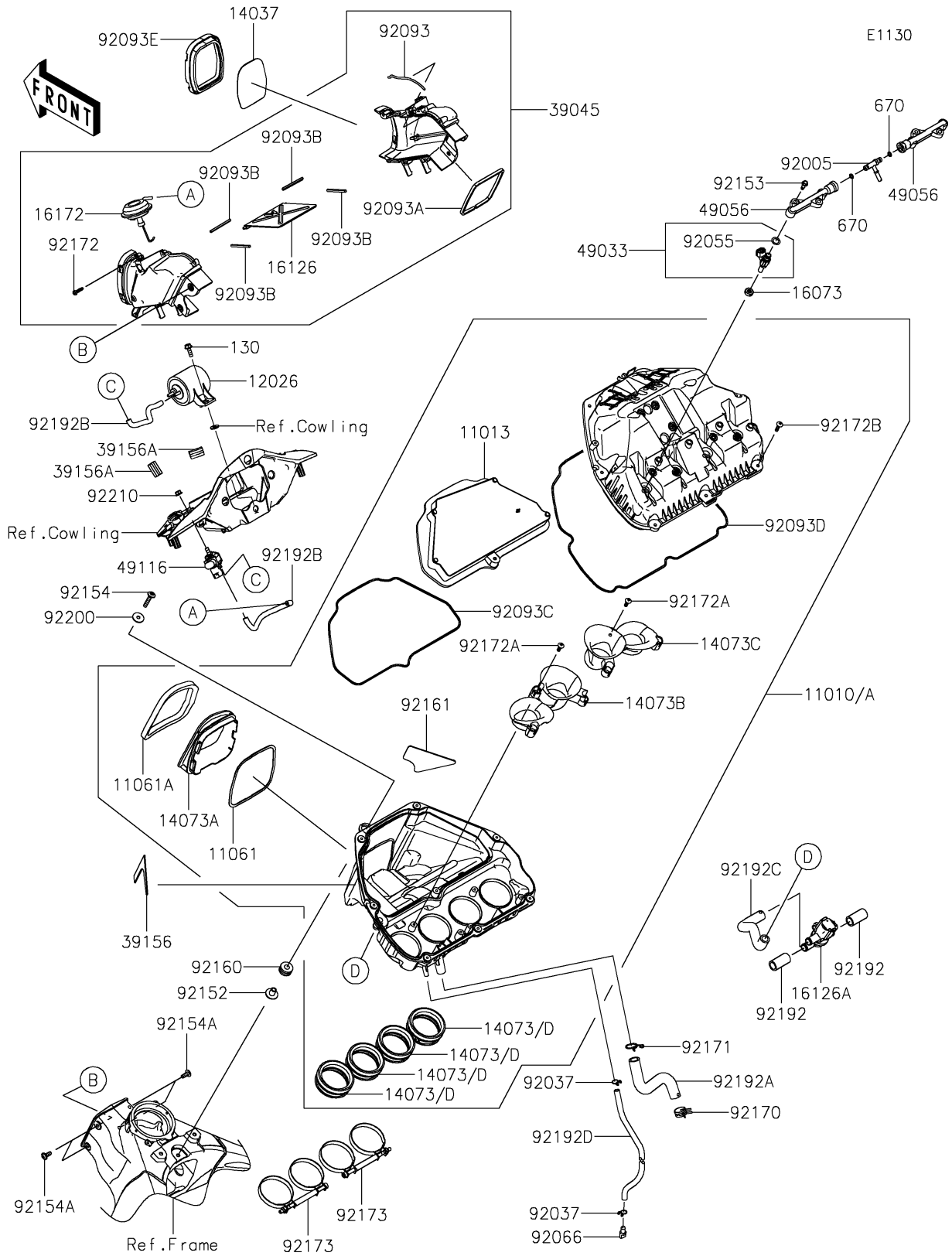


2021 Ninja® ZX™ -10R ABS KRT Edition PARTS DIAGRAM

Air Cleaner



2021 Ninja® ZX™ -10R ABS KRT Edition PARTS LIST

Air Cleaner

ITEM NAME	PART NUMBER	QUANTITY
FILTER-ASSY-AIR (Ref # 11010)	11010-0992	1
FILTER-ASSY-AIR (Ref # 11010A)	11010-0998	1
ELEMENT-AIR FILTER (Ref # 11013)	11013-0777	1
GASKET (Ref # 11061)	11061-0444	1
GASKET (Ref # 11061A)	11061-0445	1
CHAMBER (Ref # 12026)	12026-0009	1
SCREEN, RAM DUCT (Ref # 14037)	14037-0816	1
DUCT, SUB FUNNEL (Ref # 14073)	14073-0835	4
DUCT (Ref # 14073A)	14073-0841	1
DUCT, FUNNEL, #1 (Ref # 14073B)	14073-0914	1
DUCT, FUNNEL, #3 (Ref # 14073C)	14073-0915	1
DUCT, SUB FUNNEL (Ref # 14073D)	14073-1871	4
INSULATOR (Ref # 16073)	16073-0129	4
VALVE (Ref # 16126)	16126-0057	1
VALVE, AIR SWITCHING (Ref # 16126A)	16126-0745	1
ACTUATOR (Ref # 16172)	16172-0023	1
DUCT-ASSY, RAM (Ref # 39045)	39045-0058	1
PAD (Ref # 39156)	39156-1988	1
PAD, 20X26.5X5 (Ref # 39156A)	39156-2644	2
NOZZLE-INJECTION (Ref # 49033)	49033-0564	4
PIPE-INJECTION (Ref # 49056)	49056-0032	2
VALVE-ASSY (Ref # 49116)	49116-0044	1
FITTING (Ref # 92005)	92005-0125	1
CLAMP, TUBE (Ref # 92037)	92037-147	2
RING-O, INJECTION NOZZLE (Ref # 92055)	92055-0124	4
PLUG, DRAIN (Ref # 92066)	92066-1211	1
SEAL (Ref # 92093)	92093-0175	1
SEAL (Ref # 92093A)	92093-0176	1
SEAL (Ref # 92093B)	92093-0178	4

2021 Ninja® ZX™ -10R ABS KRT Edition PARTS LIST

Air Cleaner

ITEM NAME	PART NUMBER	QUANTITY
SEAL,ELEMENT (Ref # 92093C)	92093-0686	1
SEAL,CASE (Ref # 92093D)	92093-0693	1
SEAL,RAM DUCT (Ref # 92093E)	92093-0752	1
COLLAR (Ref # 92152)	92152-2197	1
BOLT,FLANGED,5MM (Ref # 92153)	92153-0361	4
BOLT,SOCKET,6X30 (Ref # 92154)	92154-0435	1
BOLT,FLANGED,BUTTON,6X18 (Ref # 92154A)	92154-1882	4
DAMPER (Ref # 92160)	92160-1162	1
DAMPER (Ref # 92161)	92161-2408	1
CLAMP (Ref # 92170)	92170-1060	1
CLAMP (Ref # 92171)	92171-0391	1
SCREW,TAPPING,5X20 (Ref # 92172)	92172-0009	6
SCREW,TAPPING,5X16 (Ref # 92172A)	92172-0482	6
SCREW,TAPPING,5X20 (Ref # 92172B)	92172-0483	8
CLAMP (Ref # 92173)	92173-0222	2
TUBE,12X17.6X38 (Ref # 92192)	92192-0887	2
TUBE,BREATHER (Ref # 92192A)	92192-0889	1
TUBE (Ref # 92192B)	92192-1119	2
TUBE,AIR CLEANER-ASV (Ref # 92192C)	92192-1619	1
TUBE,10X13X420 (Ref # 92192D)	92192-1644	1
WASHER,6.5X22X1.6 (Ref # 92200)	92200-1087	1
NUT,FLANGED,6MM (Ref # 92210)	92210-0368	1
BOLT-FLANGED,6X18 (Ref # 130)	130BB0618	1
O RING,8MM (Ref # 670)	670E1508	2