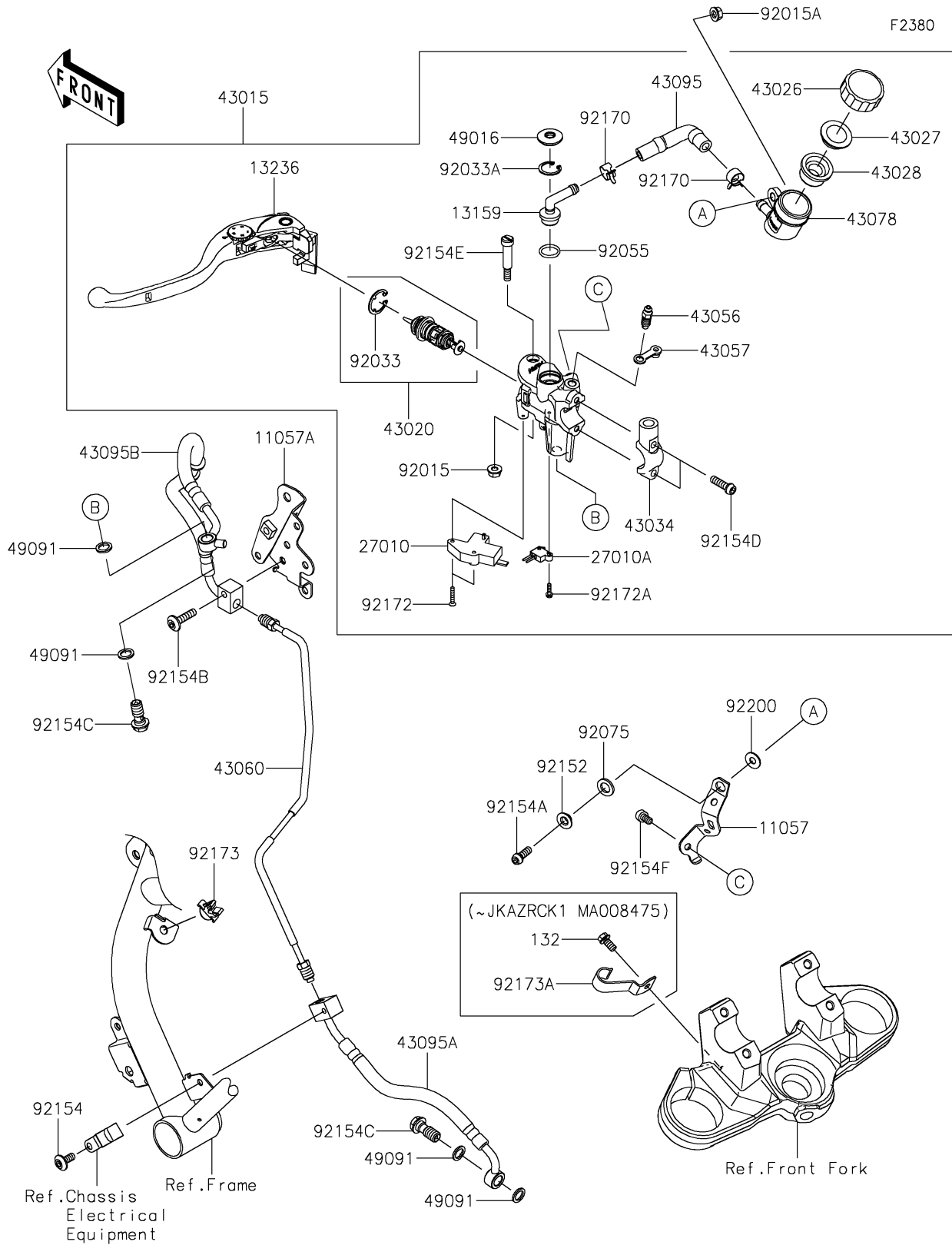


2021 Z H2 PARTS DIAGRAM

Clutch Master Cylinder



2021 Z H2 PARTS LIST

Clutch Master Cylinder

ITEM NAME	PART NUMBER	QUANTITY
BRACKET,RESERVOIR TANK (Ref # 11057)	11057-2909	1
BRACKET,HEAD PIPE (Ref # 11057A)	11057-7240	1
CONNECTOR (Ref # 13159)	13159-1061	1
LEVER-COMP,CLUTCH (Ref # 13236)	13236-0803	1
SWITCH,CLUTCH (Ref # 27010)	27010-0854	1
SWITCH,CRUISE CONTROL CANCEL (Ref # 27010A)	27010-0967	1
CYLINDER-ASSY-MASTER,CLUTCH (Ref # 43015)	43015-0785	1
PISTON-COMP-BRAKE (Ref # 43020)	43020-0028	1
CAP-BRAKE (Ref # 43026)	43026-1070	1
PLATE-DIAPHRAGM (Ref # 43027)	43027-1054	1
DIAPHRAGM (Ref # 43028)	43028-1073	1
HOLDER-BRAKE,MASTER CYLINDER (Ref # 43034)	43034-0057	1
BREATHER-BRAKE (Ref # 43056)	43056-1056	1
CAP-BREATHER (Ref # 43057)	43057-1001	1
PIPE-BRAKE (Ref # 43060)	43060-0346	1
RESERVOIR (Ref # 43078)	43078-0580	1
HOSE-BRAKE,FR MASTER CYLINDER (Ref # 43095)	43095-0040	1
HOSE-BRAKE,BRAKE PIPE-ENG. (Ref # 43095A)	43095-1700	1
HOSE-BRAKE,M/C-BRAKE PIPE (Ref # 43095B)	43095-1812	1
COVER-SEAL (Ref # 49016)	49016-1147	1
WASHER-SEAL,10.1X14.5X1.5 (Ref # 49091)	49091-0001	4
NUT,FLANGED,6MM,BLACK (Ref # 92015)	92015-1233	1
NUT,FLANGED,6MM (Ref # 92015A)	92015-1367	1
RING-SNAP (Ref # 92033)	92033-0034	1
RING-SNAP,20.5MM (Ref # 92033A)	92033-1186	1
RING-O,14.8X2.4 (Ref # 92055)	92055-0741	1
DAMPER (Ref # 92075)	92075-1564	1
COLLAR,6.5X10X5.3 (Ref # 92152)	92152-1863	1
BOLT,SOCKET,6X14 (Ref # 92154)	92154-0907	1

2021 Z H2 PARTS LIST

Clutch Master Cylinder

ITEM NAME	PART NUMBER	QUANTITY
BOLT,SOCKET,6X18 (Ref # 92154A)	92154-1455	1
BOLT,SOCKET,6X25 (Ref # 92154B)	92154-1532	1
BOLT,BANJO,10X23 (Ref # 92154C)	92154-1712	2
BOLT,SOCKET,6X22 (Ref # 92154D)	92154-1724	2
BOLT,LEVER (Ref # 92154E)	92154-1912	1
BOLT,SOCKET,6X8 (Ref # 92154F)	92154-2914	1
CLAMP,HOSE (Ref # 92170)	92170-1091	2
SCREW (Ref # 92172)	92172-1242	2
SCREW (Ref # 92172A)	92172-1243	1
CLAMP (Ref # 92173)	92173-2180	1
CLAMP (Ref # 92173A)	92173-2182	1
WASHER,6.5X16X1.0 (Ref # 92200)	92200-3712	1
BOLT-FLANGED-SMALL,6X12 (Ref # 132)	132BB0612	1