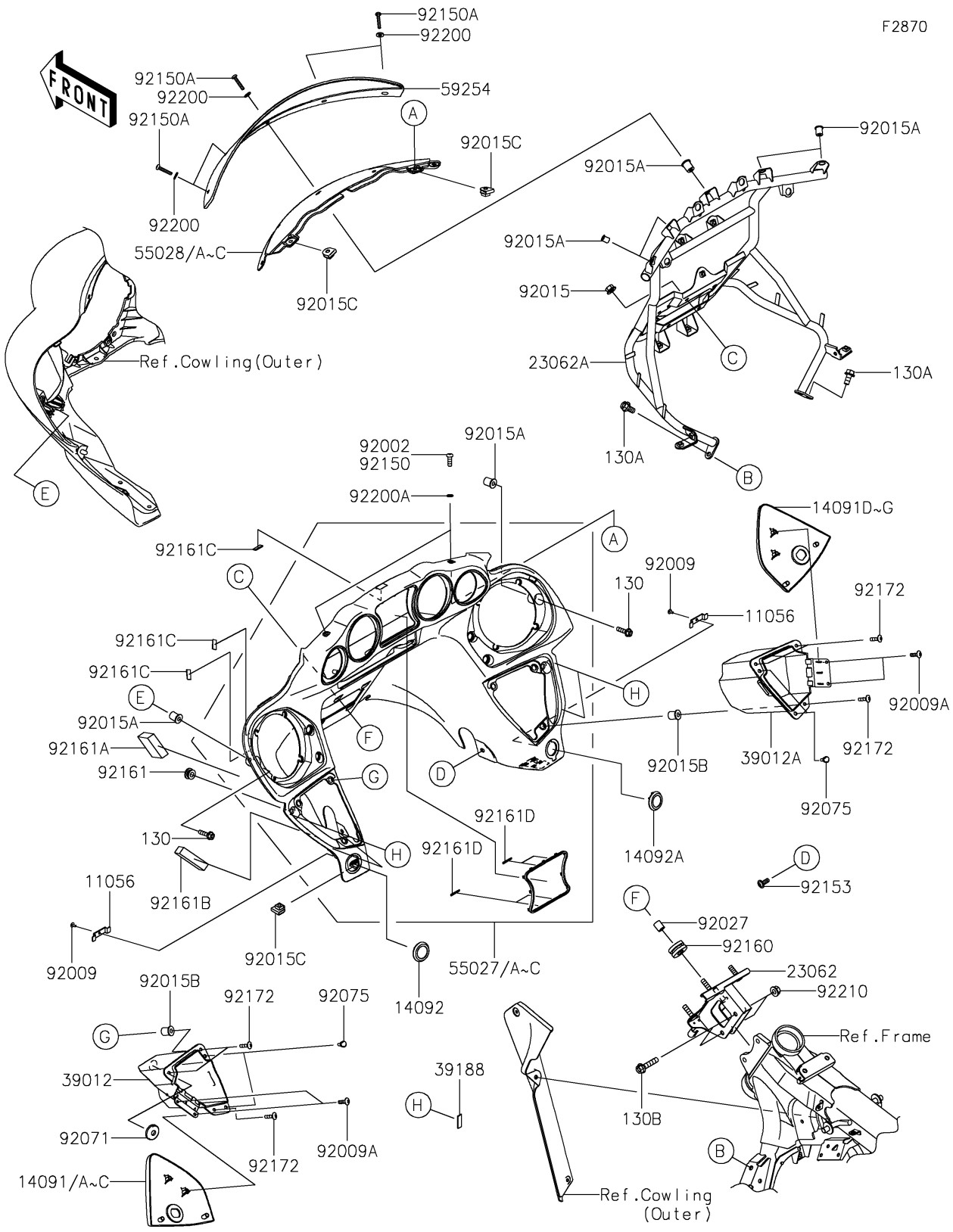


# 2018 VULCAN® 1700 VAQUERO® ABS PARTS DIAGRAM

Cowling(Inner)

F2870



## 2018 VULCAN® 1700 VAQUERO® ABS PARTS LIST

### Cowling(Inner)

ITEM NAME	PART NUMBER	QUANTITY
BRACKET (Ref # 11056)	11056-0373	2
COVER,STORAGE CASE,LH,M.S.BLK (Ref # 14091A)	14091-0946-660	1
COVER,STORAGE CASE,RH,M.S.BLK (Ref # 14091E)	14091-0947-660	1
COVER,SUB LAMP SW. (Ref # 14092)	14092-0213	1
COVER,DC SOCKET (Ref # 14092A)	14092-0214	1
BRACKET-COMP,HEAD PIPE (Ref # 23062)	23062-0106	1
BRACKET-COMP,COWLING (Ref # 23062A)	23062-0720	1
CASE-STORAGE,LH (Ref # 39012)	39012-0027	1
CASE-STORAGE,RH (Ref # 39012A)	39012-0028	1
TAPE,10X30 (Ref # 39188)	39188-0555	4
COWLING-ASSY,UPP,INNER,M.S.BLK (Ref # 55027A)	55027-0043-660	1
COWLING,CNT,EBONY (Ref # 55028C)	55028-0227-H8	1
DEFLECTOR (Ref # 59254)	59254-0001	1
SCREW,TAPPING,4X8 (Ref # 92009)	92009-1155	2
SCREW,TAPPING,5X10 (Ref # 92009A)	92009-1332	4
NUT,FLANGED,8MM (Ref # 92015)	92015-1406	4
NUT (Ref # 92015A)	92015-1700	7
NUT,WELL,5MM (Ref # 92015B)	92015-1757	6
NUT,CLIP,6MM (Ref # 92015C)	92015-1904	4
COLLAR,8.8X12X14 (Ref # 92027)	92027-012	4
GROMMET,TAIL LAMP WIRE (Ref # 92071)	92071-079	1
DAMPER,6X10X15 (Ref # 92075)	92075-1808	4
BOLT,SOCKET,6X18 (Ref # 92150)	92150-1553	2
BOLT,SOCKET,6X30 (Ref # 92150A)	92150-1554	5
BOLT,SOCKET,6X15 (Ref # 92153)	92153-1451	2
DAMPER (Ref # 92160)	92160-1007	4
DAMPER (Ref # 92161)	92161-0317	2
BOLT-FLANGED,6X22 (Ref # 130)	130BB0622	2
BOLT-FLANGED,8X16 (Ref # 130A)	130BB0816	2

## 2018 VULCAN® 1700 VAQUERO® ABS PARTS LIST

Cowling(Inner)

ITEM NAME	PART NUMBER	QUANTITY
BOLT-FLANGED,8X35 (Ref # 130B)	130BB0835	2
DAMPER (Ref # 92161A)	92161-0784	2
DAMPER (Ref # 92161B)	92161-0785	2
DAMPER (Ref # 92161C)	92161-0965	5
DAMPER,3X25X0.3 (Ref # 92161D)	92161-0996	4
SCREW,5X18 (Ref # 92172)	92172-0428	6
WASHER,6.5X14X1 (Ref # 92200)	92200-1388	5
WASHER,6.2X10X1 (Ref # 92200A)	92200-1465	2
NUT,FLANGED,8MM (Ref # 92210)	92210-0004	2