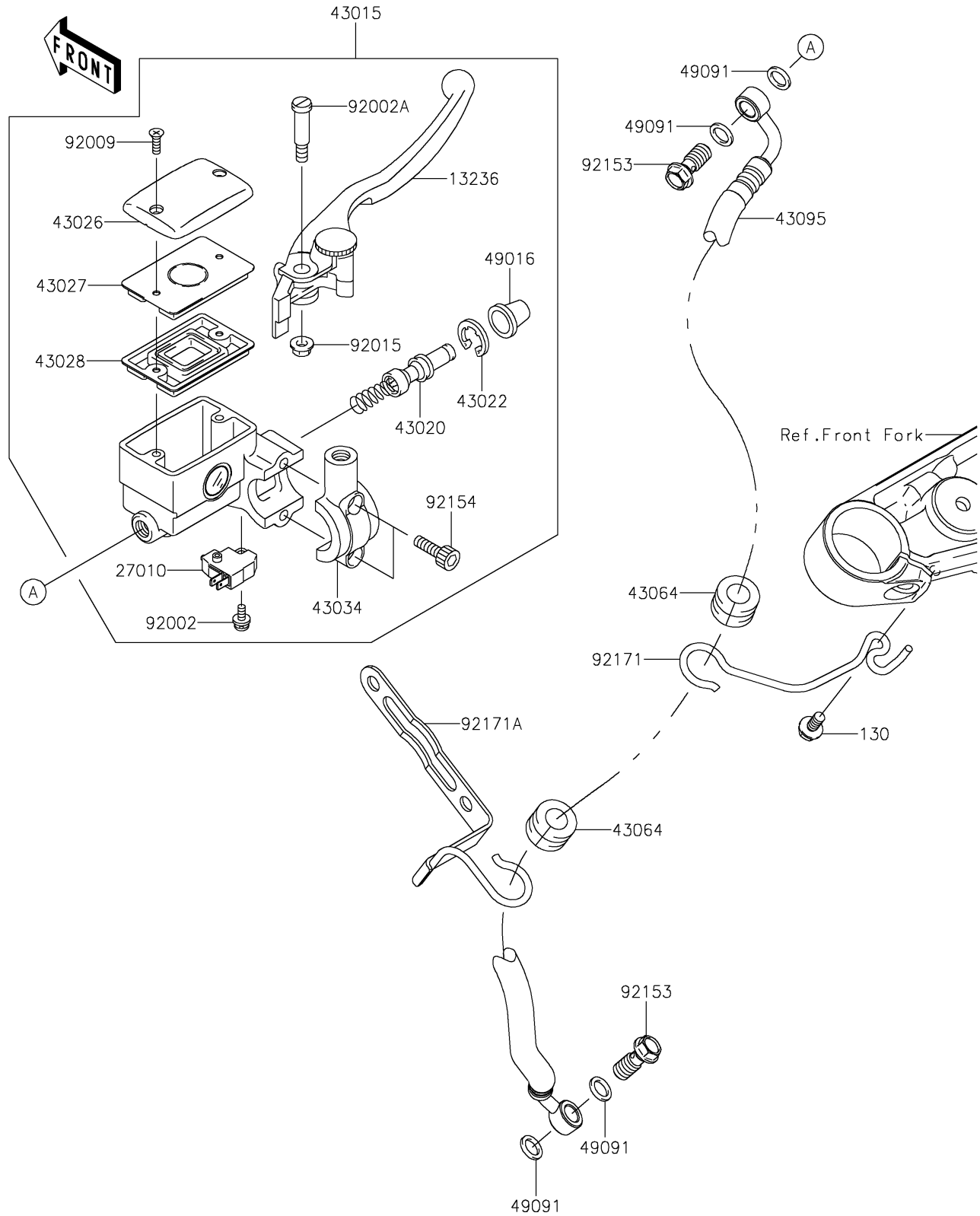


## 2018 VULCAN® 900 CUSTOM PARTS DIAGRAM

Front Master Cylinder

F2291



## 2018 VULCAN® 900 CUSTOM PARTS LIST

### Front Master Cylinder

| ITEM NAME                                | PART NUMBER | QUANTITY |
|--|-------------|----------|
| BOLT-FLANGED,6X12 (Ref # 130)            | 130BB0612   | 1        |
| LEVER-COMP,FRONT BRAKE (Ref # 13236)     | 13236-1315  | 1        |
| SWITCH,BRAKE (Ref # 27010)               | 27010-0762  | 1        |
| CYLINDER-ASSY-MASTER,FR (Ref # 43015)    | 43015-0701  | 1        |
| PISTON-COMP-BRAKE (Ref # 43020)          | 43020-1098  | 1        |
| STOPPER-BRAKE,PISTON (Ref # 43022)       | 43022-1010  | 1        |
| CAP-BRAKE (Ref # 43026)                  | 43026-0025  | 1        |
| PLATE-DIAPHRAGM (Ref # 43027)            | 43027-1059  | 1        |
| DIAPHRAGM,MASTER CYLINDER (Ref # 43028)  | 43028-1058  | 1        |
| HOLDER-BRAKE (Ref # 43034)               | 43034-0071  | 1        |
| GROMMET,HOSE CLAMP (Ref # 43064)         | 43064-006   | 1        |
| HOSE-BRAKE,FR (Ref # 43095)              | 43095-0683  | 1        |
| COVER-SEAL,MASTER CYLINDER (Ref # 49016) | 49016-1044  | 1        |
| WASHER-SEAL,10.1X14.5X1.5 (Ref # 49091)  | 49091-0001  | 1        |
| BOLT,SCREW,4X12 (Ref # 92002)            | 92002-1323  | 1        |
| BOLT,LEVER SET (Ref # 92002A)            | 92002-1561  | 1        |
| SCREW,4MM (Ref # 92009)                  | 92009-1458  | 1        |
| NUT,FLANGED,6MM (Ref # 92015)            | 92015-1528  | 1        |
| BOLT,OIL,L=23 (Ref # 92153)              | 92153-1419  | 1        |
| BOLT,SOCKET,6MM (Ref # 92154)            | 92154-0541  | 1        |
| CLAMP,BRAKE HOSE (Ref # 92171)           | 92171-0629  | 1        |
| CLAMP,BRAKE HOSE (Ref # 92171A)          | 92171-0770  | 1        |