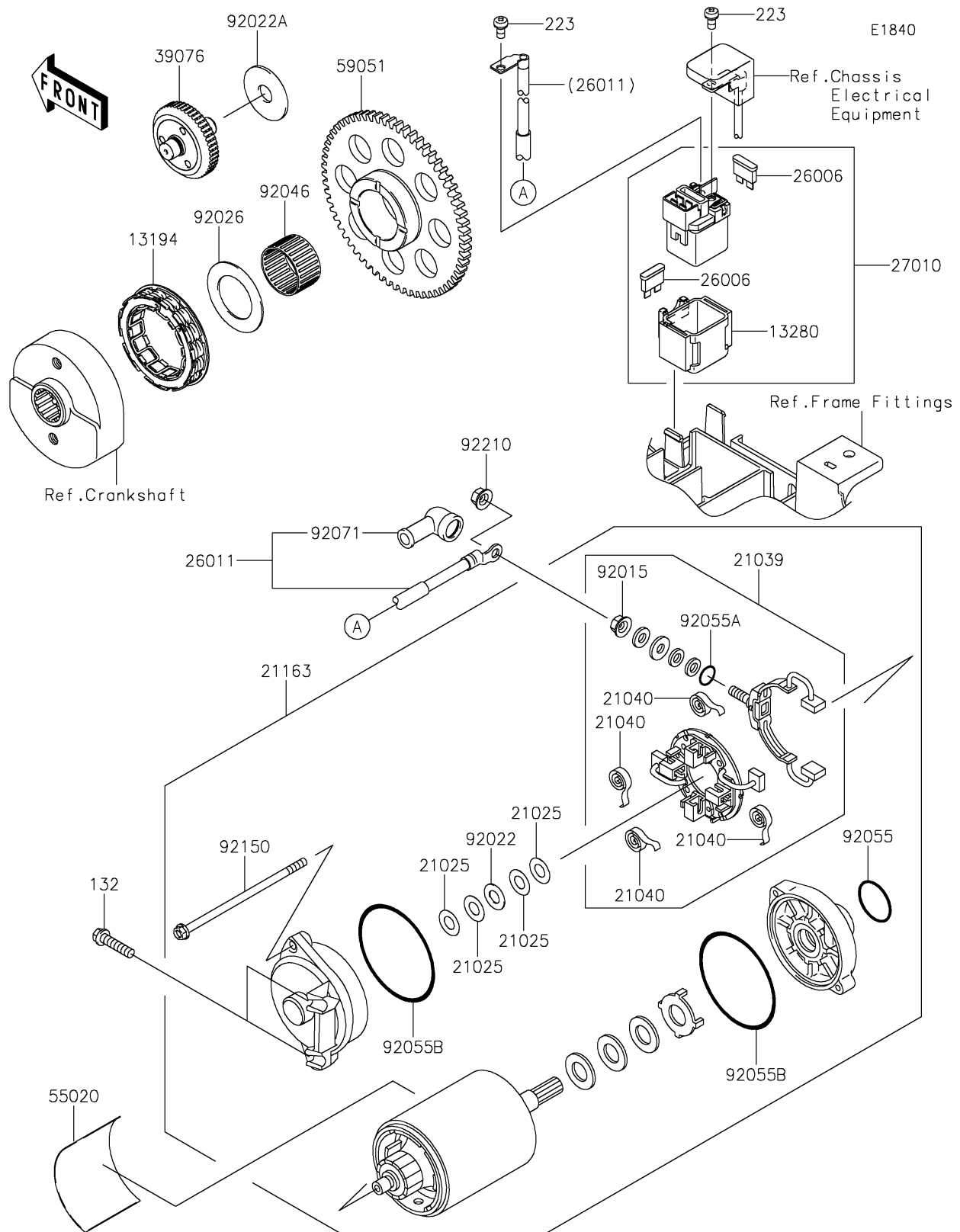


2018 VULCAN® 900 CUSTOM PARTS DIAGRAM

Starter Motor



2018 VULCAN® 900 CUSTOM PARTS LIST

Starter Motor

| ITEM NAME | PART NUMBER | QUANTITY |
|--|-------------|----------|
| CLUTCH-ONEWAY (Ref # 13194) | 13194-0009 | 1 |
| BOLT-FLANGED-SMALL,6X25 (Ref # 132) | 132BA0625 | 1 |
| HOLDER,MAGNETIC SWITCH (Ref # 13280) | 13280-0822 | 1 |
| WASHER,9.1X18X0.2 (Ref # 21025) | 21025-011 | 1 |
| BRUSH,CARBON (Ref # 21039) | 21039-1060 | 1 |
| SPRING-BRUSH (Ref # 21040) | 21040-1055 | 1 |
| STARTER-ELECTRIC (Ref # 21163) | 21163-0066 | 1 |
| SCREW-PAN-WS-CROS,5X10 (Ref # 223) | 223AA0510 | 1 |
| FUSE,BLADE,30A,GREEN (Ref # 26006) | 26006-1006 | 1 |
| WIRE-LEAD,STARTER MOTOR (Ref # 26011) | 26011-0126 | 1 |
| SWITCH,MAGNETIC (Ref # 27010) | 27010-0793 | 1 |
| LIMITER (Ref # 39076) | 39076-0008 | 1 |
| GUARD,STARTER MOTER (Ref # 55020) | 55020-1589 | 1 |
| GEAR-SPUR,63T (Ref # 59051) | 59051-0060 | 1 |
| NUT,STARTER MOTOR (Ref # 92015) | 92015-1476 | 1 |
| WASHER,9.1X18X0.8 (Ref # 92022) | 92022-1132 | 1 |
| WASHER,12.3X38X2.0 (Ref # 92022A) | 92022-1664 | 1 |
| SPACER,31X49.5X1.2 (Ref # 92026) | 92026-1490 | 1 |
| BEARING-NEEDLE,K30X35X20 (Ref # 92046) | 92046-1171 | 1 |
| RING-O (Ref # 92055) | 92055-1276 | 1 |
| RING-O,4.5X2.0 (Ref # 92055A) | 92055-1370 | 1 |
| RING-O,STARTER MOTOR (Ref # 92055B) | 92055-1381 | 1 |
| GROMMET (Ref # 92071) | 92071-0024 | 1 |
| BOLT,STARTER MOTOR (Ref # 92150) | 92150-1572 | 1 |
| NUT,6MM (Ref # 92210) | 92210-0188 | 1 |