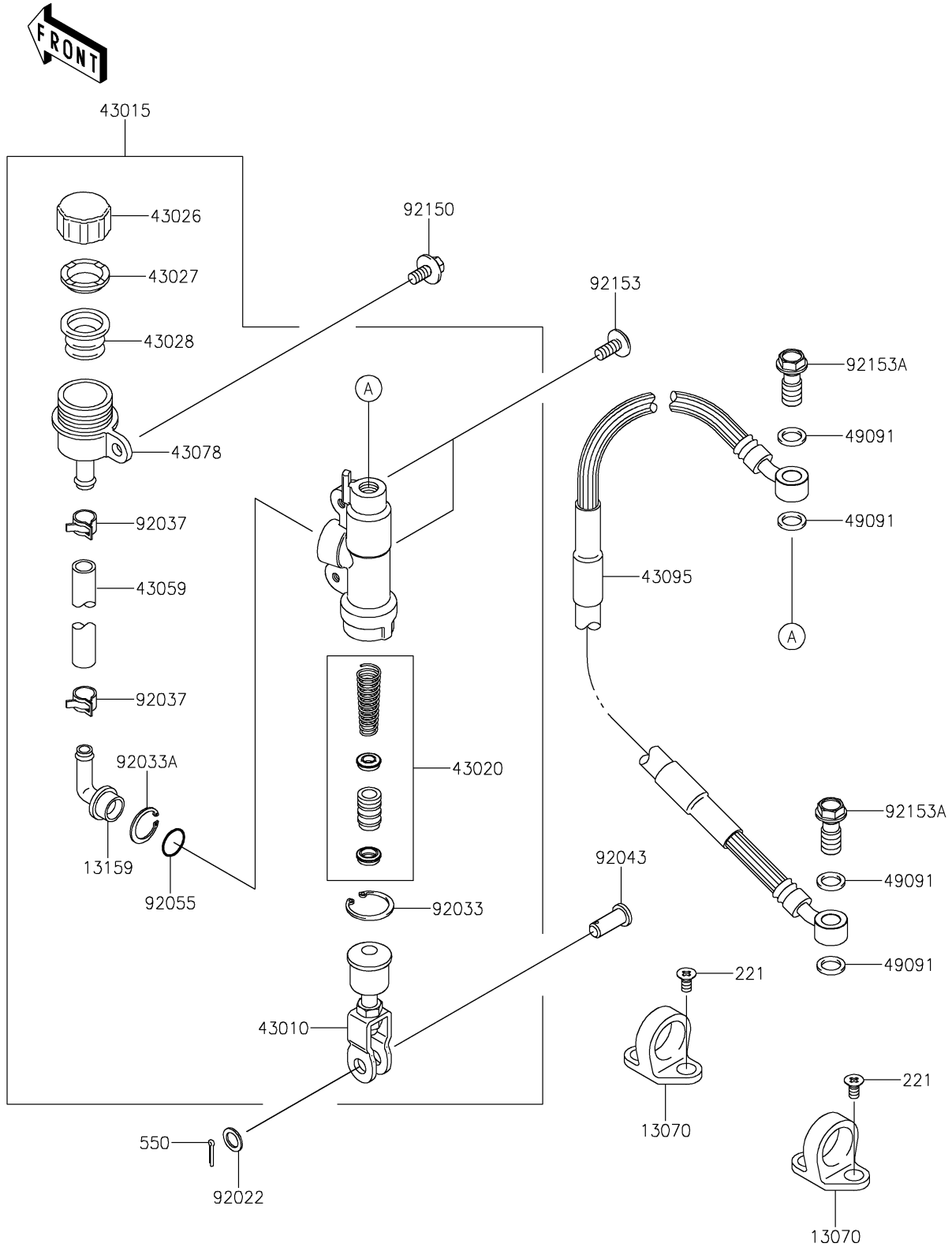


2021 KX™100 PARTS DIAGRAM

Rear Master Cylinder

F2293



2021 KX™100 PARTS LIST

Rear Master Cylinder

| ITEM NAME | PART NUMBER | QUANTITY |
|---|-------------|----------|
| GUIDE,HOSE (Ref # 13070) | 13070-1381 | 2 |
| CONNECTOR (Ref # 13159) | 13159-1056 | 1 |
| SCREW-CSK-CROS,5X10 (Ref # 221) | 221AA0510 | 4 |
| ROD-ASSY-BRAKE (Ref # 43010) | 43010-1079 | 1 |
| CYLINDER-ASSY-MASTER,RR (Ref # 43015) | 43015-1606 | 1 |
| PISTON-COMP-BRAKE (Ref # 43020) | 43020-1094 | 1 |
| CAP-BRAKE (Ref # 43026) | 43026-1058 | 1 |
| PLATE-DIAPHRAGM (Ref # 43027) | 43027-1052 | 1 |
| DIAPHRAGM (Ref # 43028) | 43028-1060 | 1 |
| HOSE-BRAKE,RR MASTER CYLINDER (Ref # 43059) | 43059-1670 | 1 |
| RESERVOIR (Ref # 43078) | 43078-1068 | 1 |
| HOSE-BRAKE,RR,L=567 (Ref # 43095) | 43095-0668 | 1 |
| WASHER-SEAL,10.1X14.5X1.5 (Ref # 49091) | 49091-0001 | 4 |
| PIN-COTTER,2.0X15 (Ref # 550) | 550AA2015 | 1 |
| WASHER,8.5X13X1 (Ref # 92022) | 92022-1028 | 1 |
| RING-SNAP,20.9X24.6X1.2 (Ref # 92033) | 92033-0079 | 1 |
| RING-SNAP,20.5MM (Ref # 92033A) | 92033-1186 | 1 |
| CLAMP (Ref # 92037) | 92037-1710 | 2 |
| PIN (Ref # 92043) | 92043-0004 | 1 |
| RING-O,14.8X2.4 (Ref # 92055) | 92055-0741 | 1 |
| BOLT,6X14 (Ref # 92150) | 92150-1340 | 1 |
| BOLT,SOCKET,6X14 (Ref # 92153) | 92153-1021 | 2 |
| BOLT,OIL,L=23 (Ref # 92153A) | 92153-1419 | 2 |