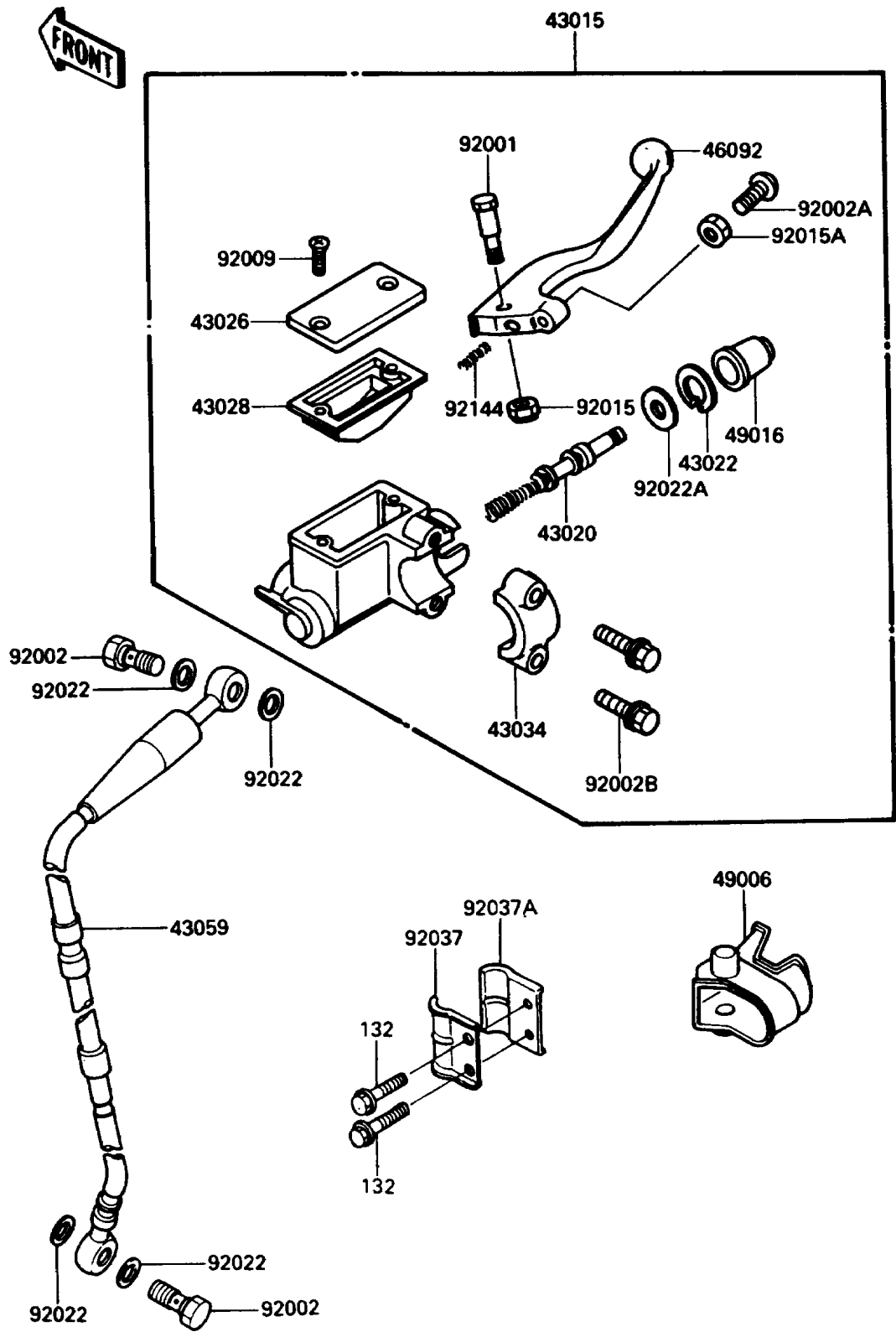


# 1988 KX™ 250 PARTS DIAGRAM

Front Master Cylinder

F2291-0174



# 1988 KX™ 250 PARTS LIST

## Front Master Cylinder

ITEM NAME	PART NUMBER	QUANTITY
CYLINDER-ASSY-MASTER,FR (Ref # 43015)	43015-1367	1
PISTON-COMP-BRAKE (Ref # 43020)	43020-1071	1
STOPPER-BRAKE,PISTON (Ref # 43022)	43022-1010	1
CAP-BRAKE (Ref # 43026)	43026-1063	1
DIAPHRAGM (Ref # 43028)	43028-1067	1
HOLDER-BRAKE,MASTER CYLINDER (Ref # 43034)	43034-1016	1
HOSE-BRAKE,FR (Ref # 43059)	43059-1421	1
LEVER-GRIP,FRONT BRAKE (Ref # 46092)	46092-1148	1
BOOT,FRONT BRAKE LEVER (Ref # 49006)	49006-1231	1
COVER-SEAL,MASTER CYLINDER (Ref # 49016)	49016-1044	1
BOLT,FRONT BRAKE LEVER (Ref # 92001)	92001-1728	1
BOLT,OIL,L=23 (Ref # 92002)	92002-1888	2
BOLT,ADJUST (Ref # 92002A)	92002-1893	1
BOLT (Ref # 92002B)	92002-1894	2
SCREW,4MM (Ref # 92009)	92009-1458	2
NUT,FLANGED,6MM (Ref # 92015)	92015-1233	1
NUT,ADJUST (Ref # 92015A)	92015-1642	1
WASHER,10.5X15X1.5 (Ref # 92022)	43067-001	4
WASHER (Ref # 92022A)	92022-1814	1
CLAMP,BRAKE HOSE,OUTSIDE (Ref # 92037)	92037-1362	1
CLAMP,BRAKE HOSE,INSIDE (Ref # 92037A)	92037-1363	1
SPRING,RETURN (Ref # 92144)	92144-1103	1
BOLT-FLANGED-SMALL (Ref # 132)	132G0616	2