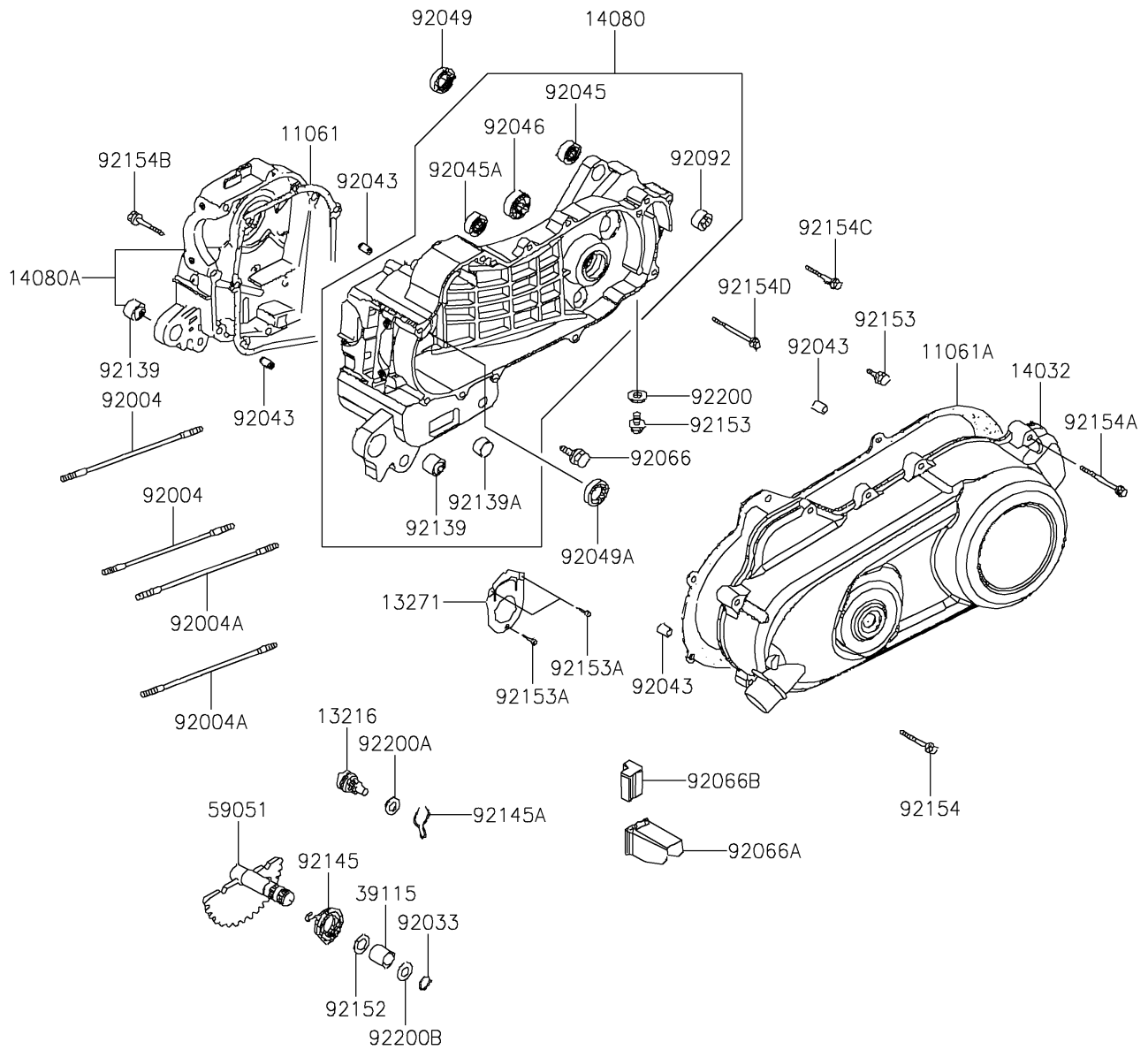


## 2017 KFX®90 PARTS DIAGRAM

Crankcase

E1411



## 2017 KFX®90 PARTS LIST

### Crankcase

| ITEM NAME                              | PART NUMBER    | QUANTITY |
|--|----------------|----------|
| GASKET,CRANK CASE (Ref # 11061)        | 11061-Y003     | 1        |
| GASKET,CLUTCH COVER (Ref # 11061A)     | 11061-Y007     | 1        |
| GEAR-COMP,KICK DRIVEN (Ref # 13216)    | 13216-Y002     | 1        |
| PLATE (Ref # 13271)                    | 13271-Y002     | 1        |
| COVER-CLUTCH,BLACK (Ref # 14032)       | 14032-Y002-931 | 1        |
| CRANKCASE,LH (Ref # 14080)             | 14080-Y003     | 1        |
| CRANKCASE,RH (Ref # 14080A)            | 14080-Y007     | 1        |
| SHAFT-IDLER,KICK (Ref # 39115)         | 39115-Y001     | 1        |
| GEAR-SPUR,KICK STARTER (Ref # 59051)   | 59051-Y001     | 1        |
| STUD,8X182.5 (Ref # 92004)             | 92004-Y002     | 1        |
| STUD,8X190.5 (Ref # 92004A)            | 92004-Y004     | 1        |
| RING-SNAP (Ref # 92033)                | 92033-Y012     | 1        |
| PIN,8X14 (Ref # 92043)                 | 92043-Y012     | 1        |
| BEARING-BALL,6203 (Ref # 92045)        | 92045-Y006     | 1        |
| BEARING-BALL,6204 (Ref # 92045A)       | 92045-Y007     | 1        |
| BEARING-NEEDLE (Ref # 92046)           | 92046-Y003     | 1        |
| SEAL-OIL,20X32X6 (Ref # 92049)         | 92049-Y004     | 1        |
| SEAL-OIL,19.8X30X5 (Ref # 92049A)      | 92049-Y041     | 1        |
| PLUG,DRAIN (Ref # 92066)               | 92066-Y003     | 1        |
| PLUG (Ref # 92066A)                    | 92066-Y005     | 1        |
| PLUG (Ref # 92066B)                    | 92066-Y007     | 1        |
| BUSHING-RUBBER (Ref # 92092)           | 92092-Y002     | 1        |
| BUSHING (Ref # 92139)                  | 92139-Y001     | 1        |
| BUSHING (Ref # 92139A)                 | 92139-Y002     | 1        |
| SPRING (Ref # 92145)                   | 92145-Y001     | 1        |
| SPRING,KICK DRIVEN GEAR (Ref # 92145A) | 92145-Y011     | 1        |
| COLLAR (Ref # 92152)                   | 92152-Y006     | 1        |
| BOLT,FLANGE,8X12 (Ref # 92153)         | 92153-Y031     | 1        |
| BOLT,5X10 (Ref # 92153A)               | 92153-Y058     | 1        |

## 2017 KFX®90 PARTS LIST

Crankcase

| ITEM NAME                       | PART NUMBER | QUANTITY |
|---------------------------------|-------------|----------|
| BOLT,FLANGE,6X28 (Ref # 92154)  | 92154-Y068  | 1        |
| BOLT,FLANGE,6X35 (Ref # 92154A) | 92154-Y069  | 1        |
| BOLT,FLANGE,6X45 (Ref # 92154B) | 92154-Y135  | 1        |
| BOLT,FLANGE,8X45 (Ref # 92154C) | 92154-Y136  | 1        |
| BOLT,FLANGE,8X60 (Ref # 92154D) | 92154-Y141  | 1        |
| WASHER,8MM (Ref # 92200)        | 92200-Y001  | 1        |
| WASHER,10MM (Ref # 92200A)      | 92200-Y002  | 1        |
| WASHER (Ref # 92200B)           | 92200-Y008  | 1        |