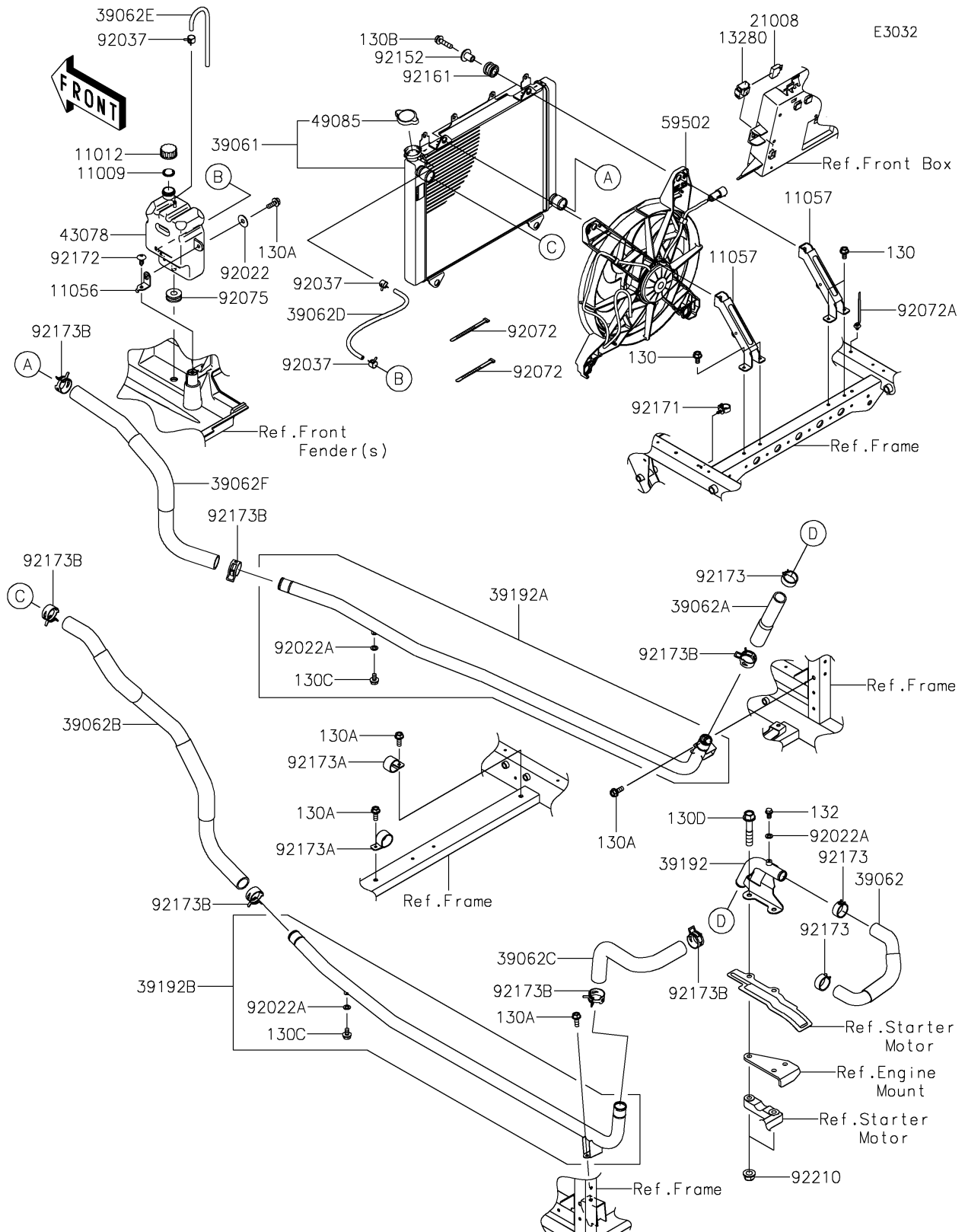


2018 MULE PRO-FXT™ EPS CAMO PARTS DIAGRAM

Radiator



2018 MULE PRO-FXT™ EPS CAMO PARTS LIST

Radiator

| ITEM NAME | PART NUMBER | QUANTITY |
|--|-------------|----------|
| GASKET,RESERVOIR TANK CAP (Ref # 11009) | 11009-1145 | 1 |
| CAP (Ref # 11012) | 11012-1084 | 1 |
| BRACKET,RESERVOIR (Ref # 11056) | 11056-3856 | 1 |
| BRACKET,RADIATOR (Ref # 11057) | 11057-0774 | 1 |
| BOLT-FLANGED,6X12 (Ref # 130) | 130BA0612 | 1 |
| BOLT-FLANGED,6X16 (Ref # 130A) | 130BA0616 | 1 |
| BOLT-FLANGED,6X25 (Ref # 130B) | 130BA0625 | 1 |
| BOLT-FLANGED,6X10 (Ref # 130C) | 130BB0610 | 1 |
| BOLT-FLANGED,10X50 (Ref # 130D) | 130CA1050 | 1 |
| BOLT-FLANGED-SMALL,6X10 (Ref # 132) | 132BA0610 | 1 |
| HOLDER,BREAKER (Ref # 13280) | 13280-0898 | 1 |
| BREAKER,RAD. FAN,20A (Ref # 21008) | 21008-0011 | 1 |
| RADIATOR-ASSY (Ref # 39061) | 39061-0706 | 1 |
| HOSE-COOLING (Ref # 39062) | 39062-0647 | 1 |
| HOSE-COOLING,ENGINE IN (Ref # 39062A) | 39062-0648 | 1 |
| HOSE-COOLING,RADIATOR IN (Ref # 39062B) | 39062-0650 | 1 |
| HOSE-COOLING,ENGINE OUT (Ref # 39062C) | 39062-0651 | 1 |
| HOSE-COOLING,RAD.-RESERVOIR (Ref # 39062D) | 39062-0657 | 1 |
| HOSE-COOLING,OVER FLOW (Ref # 39062E) | 39062-0696 | 1 |
| HOSE-COOLING,RADIATOR OUT (Ref # 39062F) | 39062-0777 | 1 |
| PIPE-WATER (Ref # 39192) | 39192-0573 | 1 |
| PIPE-WATER,RH (Ref # 39192A) | 39192-0574 | 1 |
| PIPE-WATER,LH (Ref # 39192B) | 39192-0575 | 1 |
| RESERVOIR (Ref # 43078) | 43078-0571 | 1 |
| CAP-ASSY-PRESSURE (Ref # 49085) | 49085-0005 | 1 |
| FAN-ASSY (Ref # 59502) | 59502-0609 | 1 |
| WASHER,PLAIN,6.5X20X1 (Ref # 92022) | 92022-165 | 1 |
| WASHER,6.2X11X1 (Ref # 92022A) | 92022-304 | 1 |
| CLAMP,TUBE (Ref # 92037) | 92037-1461 | 1 |

2018 MULE PRO-FXT™ EPS CAMO PARTS LIST

Radiator

| ITEM NAME | PART NUMBER | QUANTITY |
|--------------------------------------|-------------|----------|
| BAND,L=123 (Ref # 92072) | 92072-030 | 1 |
| BAND,OS170-FT7(BLACK) (Ref # 92072A) | 92072-1414 | 1 |
| DAMPER (Ref # 92075) | 92075-1185 | 1 |
| COLLAR (Ref # 92152) | 92152-1512 | 1 |
| DAMPER (Ref # 92161) | 92161-1349 | 1 |
| CLAMP (Ref # 92171) | 92171-0453 | 1 |
| SCREW,6X16 (Ref # 92172) | 92172-0284 | 1 |
| CLAMP (Ref # 92173) | 92173-0072 | 1 |
| CLAMP (Ref # 92173A) | 92173-1204 | 1 |
| CLAMP,28.6MM (Ref # 92173B) | 92173-1205 | 1 |
| NUT,LOCK,FLANGED,10MM (Ref # 92210) | 92210-0276 | 1 |