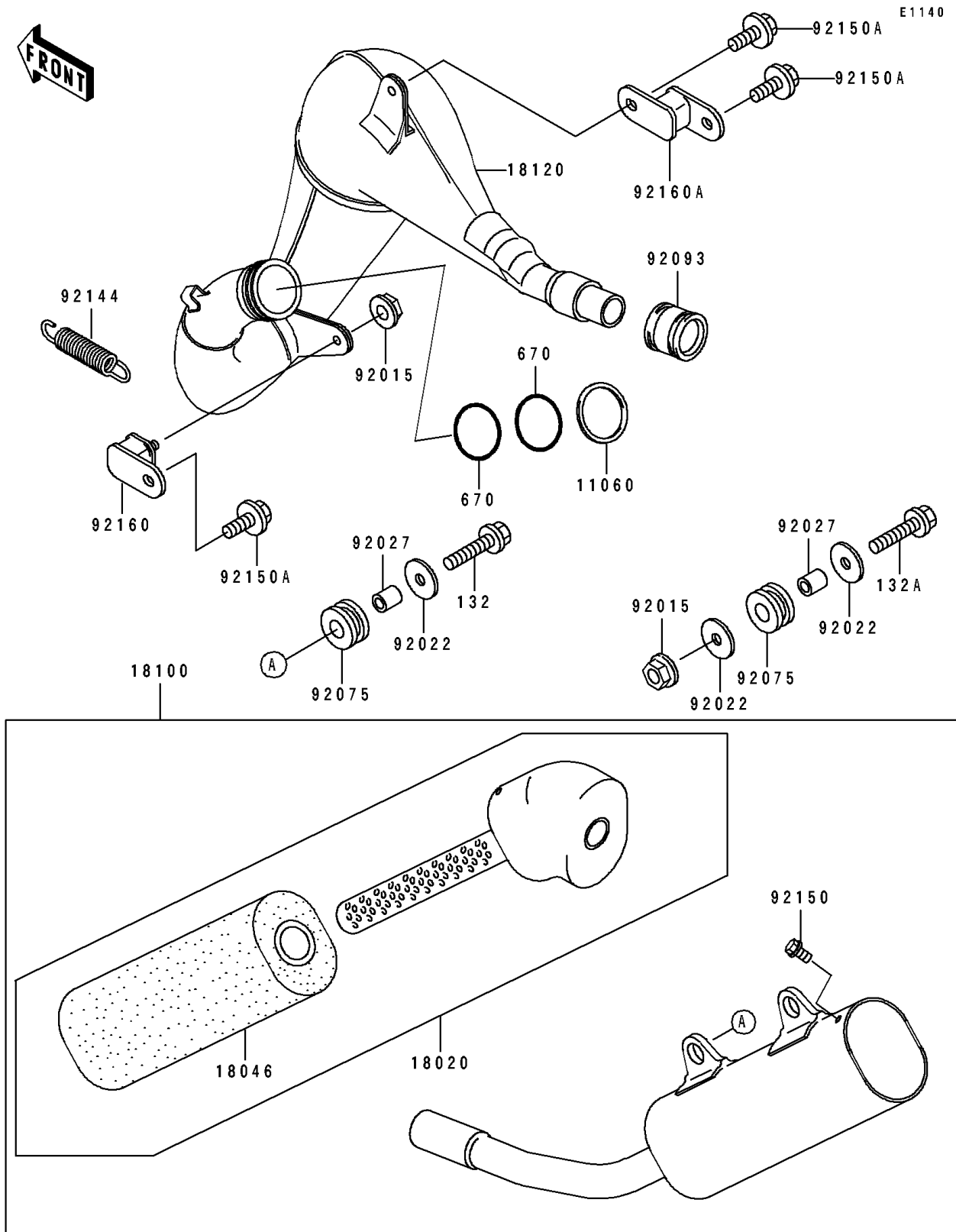


1997 KX125 PARTS DIAGRAM

Muffler(s)



1997 KX125 PARTS LIST

Muffler(s)

| ITEM NAME | PART NUMBER | QUANTITY |
|---|-------------|----------|
| BOLT-FLANGED-SMALL (Ref # 132) | 132G0625 | 1 |
| BOLT-FLANGED-SMALL (Ref # 132A) | 132G0635 | 1 |
| O RING,39MM (Ref # 670) | 670E3039 | 1 |
| GASKET,EXHAUST PIPE (Ref # 11060) | 11060-1370 | 1 |
| BAFFLE (Ref # 18020) | 18020-1236 | 1 |
| WOOL,BAFFLE PIPE (Ref # 18046) | 18046-1379 | 1 |
| BODY-ASSY-MUFFLER (Ref # 18100) | 18100-1071 | 1 |
| CHAMBER-EXHAUST (Ref # 18120) | 18120-1078 | 1 |
| NUT,FLANGED,6MM (Ref # 92015) | 92015-1078 | 1 |
| WASHER,6.5X22X1.6 (Ref # 92022) | 92022-237 | 1 |
| COLLAR,6.8X10X11.5 (Ref # 92027) | 92027-1210 | 1 |
| DAMPER,MUFFLER FITTING (Ref # 92075) | 92075-1857 | 1 |
| SEAL,MUFFLER CONNECTING (Ref # 92093) | 92093-1363 | 1 |
| SPRING,EXHAUST CONNECTING (Ref # 92144) | 92144-1470 | 1 |
| BOLT,5X8 (Ref # 92150) | 92150-1406 | 1 |
| BOLT,6X12 (Ref # 92150A) | 92150-1435 | 1 |
| DAMPER,MUFFLER,FR (Ref # 92160) | 92160-1176 | 1 |
| DAMPER,MUFFLER,RR (Ref # 92160A) | 92160-1201 | 1 |