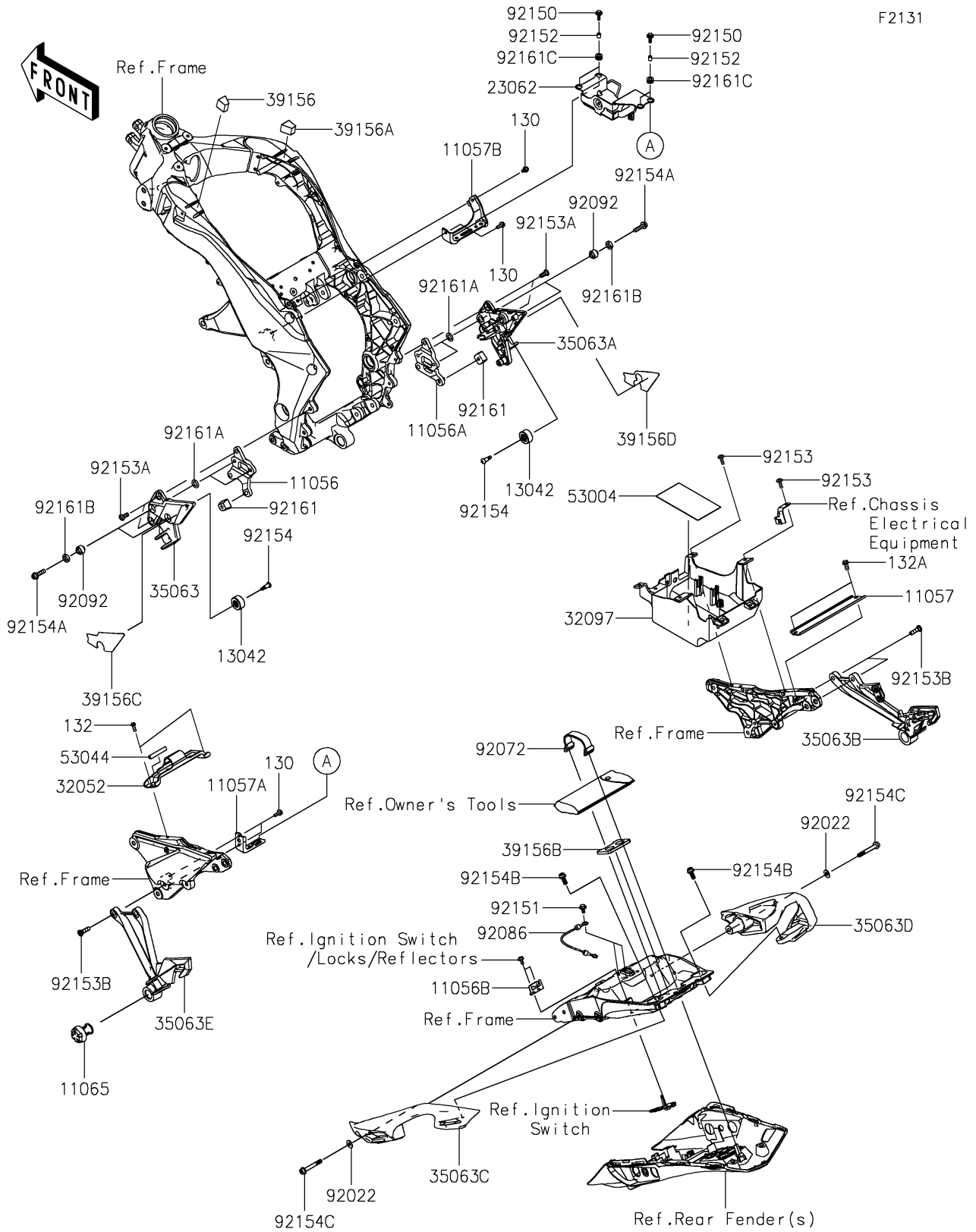


# 2020 NINJA® 1000SX PARTS DIAGRAM

## Frame Fittings



## 2020 NINJA® 1000SX PARTS LIST

### Frame Fittings

ITEM NAME	PART NUMBER	QUANTITY
BRACKET,FR,LH (Ref # 11056)	11056-0358	1
BRACKET,FR,RH (Ref # 11056A)	11056-0359	1
BRACKET,HELMET LOCK (Ref # 11056B)	11056-2657	1
BRACKET (Ref # 11057)	11057-0428	1
BRACKET,ABS UNIT (Ref # 11057A)	11057-0429	1
BRACKET,REGULATOR (Ref # 11057B)	11057-0430	1
CAP (Ref # 11065)	11065-1335	1
WEIGHT,STEP STAY (Ref # 13042)	13042-5013	2
BRACKET-COMP,ABS (Ref # 23062)	23062-0785	1
BRACKET-TANK (Ref # 32052)	32052-0719	1
CASE-BATTERY (Ref # 32097)	32097-0562	1
STAY,FR,LH,F.S.BLACK (Ref # 35063)	35063-0726-18R	1
STAY,FR,RH,F.S.BLACK (Ref # 35063A)	35063-0905-18R	1
STAY,RR,RH,F.S.BLACK (Ref # 35063B)	35063-0907-18R	1
STAY,GRIP,LH (Ref # 35063C)	35063-1358	1
STAY,GRIP,RH (Ref # 35063D)	35063-1359	1
STAY,RR,LH,F.S.BLACK (Ref # 35063E)	35063-1387-18R	1
PAD,LH (Ref # 39156)	39156-0660	1
PAD,RH (Ref # 39156A)	39156-0661	1
PAD,TOOL BOTTOM (Ref # 39156B)	39156-0752	1
PAD,STEP STAY,FR,LH (Ref # 39156C)	39156-2637	1
PAD,STEP STAY,FR,RH (Ref # 39156D)	39156-2638	1
MAT,BATTERY (Ref # 53004)	53004-0560	1
TRIM (Ref # 53044)	53044-0565	1
WASHER,8.5X20X1.6,BLACK (Ref # 92022)	92022-1317	2
BAND,L=100 (Ref # 92072)	92072-071	1
WIRE,HELMET LOCK (Ref # 92086)	92086-0019	2
BUSHING-RUBBER,8.4X20X18 (Ref # 92092)	92092-1018-SP	4
BOLT,FLANGED,6X20 (Ref # 92150)	92150-1339	4

## 2020 NINJA® 1000SX PARTS LIST

### Frame Fittings

ITEM NAME	PART NUMBER	QUANTITY
BOLT,FLANGED,6X13 (Ref # 92151)	92151-1703	2
COLLAR,6.1X8.1X9 (Ref # 92152)	92152-1782	4
BOLT,6X18 (Ref # 92153)	92153-0816	4
BOLT,SOCKET,8X20 (Ref # 92153A)	92153-1621	4
BOLT,SOCKET,8X30 (Ref # 92153B)	92153-1624	4
BOLT,SOCKET,6MM (Ref # 92154)	92154-0800	2
BOLT,SOCKET,8X30 (Ref # 92154A)	92154-2313	4
BOLT,SOCKET,8X20 (Ref # 92154B)	92154-2314	2
BOLT,SOCKET,8X60 (Ref # 92154C)	92154-2649	2
DAMPER,STEP STAY (Ref # 92161)	92161-0942	2
DAMPER,12.5X21X2 (Ref # 92161A)	92161-0943	4
BOLT-FLANGED,6X14 (Ref # 130)	130BA0614	4
BOLT-FLANGED-SMALL,6X16 (Ref # 132)	132BA0616	2
BOLT-FLANGED-SMALL,8X16 (Ref # 132A)	132BA0816	2
DAMPER,12.5X20X4 (Ref # 92161B)	92161-0944	4
DAMPER,8.2X16X8.3 (Ref # 92161C)	92161-1584	4