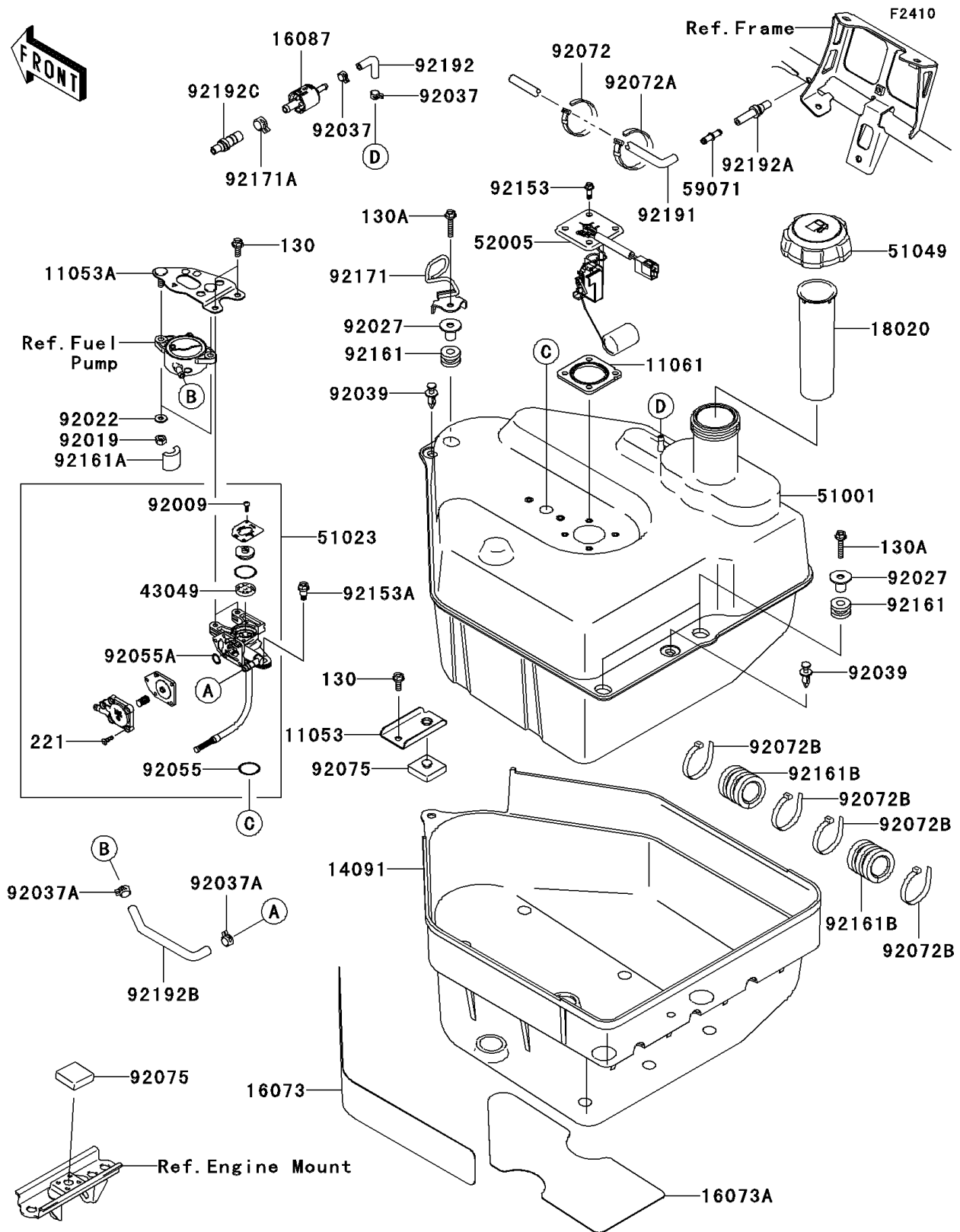


2006 Brute Force 750 4x4i PARTS DIAGRAM

Fuel Tank(A6F)



2006 Brute Force 750 4x4i PARTS LIST

Fuel Tank(A6F)

ITEM NAME	PART NUMBER	QUANTITY
BRACKET,FUEL TANK,TOP (Ref # 11053)	11053-0936	1
BRACKET,FUEL PUMP (Ref # 11053A)	11053-1247	1
GASKET,FUEL GAUGE (Ref # 11061)	11061-0071	1
COVER,FUEL TANK,LWR (Ref # 14091)	14091-0308	1
INSULATOR,FUEL TANK COVER,SIDE (Ref # 16073)	16073-0016	1
INSULATOR,FUEL TANK COVER,LWR (Ref # 16073A)	16073-0017	1
VALVE-CHECK (Ref # 16087)	16087-0002	1
BAFFLE,FUEL TANK (Ref # 18020)	18020-0008	1
PACKING (Ref # 43049)	43049-1103	1
TANK-COMP-FUEL (Ref # 51001)	51001-0058	1
TAP-ASSY,FUEL (Ref # 51023)	51023-0011	1
CAP-TANK,FUEL (Ref # 51049)	51049-1128	1
GAUGE,FUEL (Ref # 52005)	52005-0011	1
JOINT (Ref # 59071)	59071-3717	1
SCREW,3X5 (Ref # 92009)	92009-1123	1
NUT,LOCK,6MM (Ref # 92019)	92019-008	1
WASHER,6.2X15.0X1.2 (Ref # 92022)	92022-2373	1
COLLAR,L=16.1 (Ref # 92027)	92027-1847	1
CLAMP,TUBE (Ref # 92037)	92037-1461	1
CLAMP,TUBE (Ref # 92037A)	92037-1505	1
RIVET (Ref # 92039)	92039-1229	1
RING-O,FUEL TAP (Ref # 92055)	92055-0054	1
RING-O (Ref # 92055A)	92055-1664	1
BAND,L=149 (Ref # 92072)	92072-031	1
BAND,L=186 (Ref # 92072A)	92072-056	1
BAND,L=188 (Ref # 92072B)	92072-1239	1
DAMPER (Ref # 92075)	92075-1882	1
BOLT,FLANGED,5MM (Ref # 92153)	92153-0361	1
BOLT,6MM (Ref # 92153A)	92153-0824	1

2006 Brute Force 750 4x4i PARTS LIST

Fuel Tank(A6F)

ITEM NAME	PART NUMBER	QUANTITY
DAMPER (Ref # 92161)	92161-0106	1
DAMPER,FUEL PUMP (Ref # 92161A)	92161-0125	1
DAMPER,FUEL TANK,RR (Ref # 92161B)	92161-1111	1
CLAMP,FUEL TUBE (Ref # 92171)	92171-0380	1
CLAMP (Ref # 92171A)	92171-0515	1
TUBE,CANISTER-SEPARATOR,BLUE (Ref # 92191)	92191-1384	1
TUBE,FUEL TANK-CHECK VALVE (Ref # 92192)	92192-0067	1
TUBE,FRAME PIPE-CHECK VALVE (Ref # 92192A)	92192-0068	1
TUBE,FUEL (Ref # 92192B)	92192-0126	1
TUBE,FRAME PIPE-CHECK VALVE (Ref # 92192C)	92192-0128	1
BOLT-FLANGED,6X16 (Ref # 130)	130G0616	1
BOLT-FLANGED,6X30 (Ref # 130A)	130G0630	1
SCREW-CSK-CROS,4X14 (Ref # 221)	221B0414	1