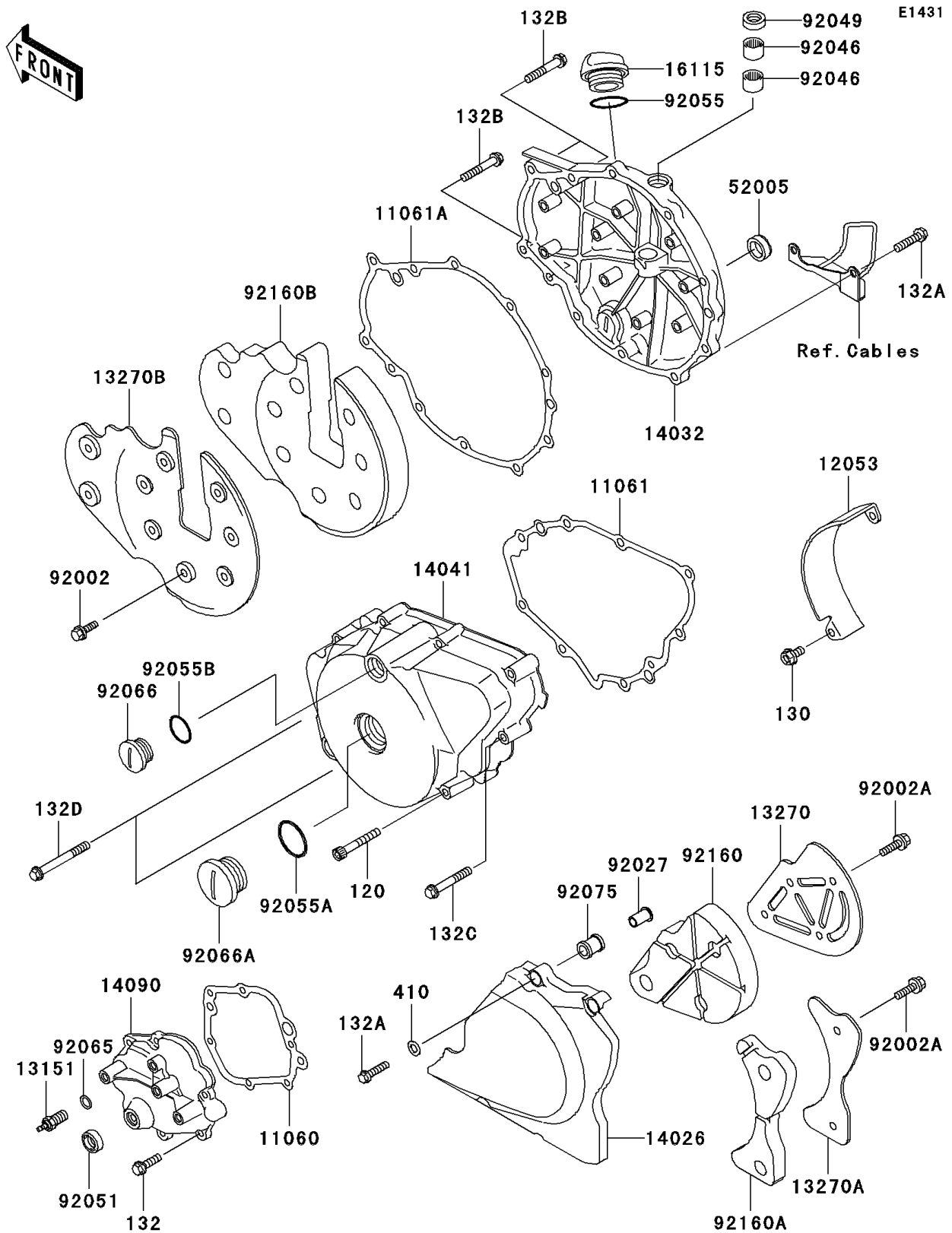


2009 Vulcan® 500 LTD PARTS DIAGRAM

Engine Cover(s)



2009 Vulcan® 500 LTD PARTS LIST

Engine Cover(s)

ITEM NAME	PART NUMBER	QUANTITY
BOLT-SOCKET,6X40 (Ref # 120)	120CB0640	1
BOLT-FLANGED,6X12 (Ref # 130)	130BA0612	1
BOLT-FLANGED-SMALL,6X20 (Ref # 132)	132BB0620	1
BOLT-FLANGED-SMALL,6X25 (Ref # 132A)	132E0625	1
BOLT-FLANGED-SMALL,6X35 (Ref # 132B)	132E0635	1
BOLT-FLANGED-SMALL,6X40 (Ref # 132C)	132E0640	1
BOLT-FLANGED-SMALL,6X55 (Ref # 132D)	132E0655	1
WASHER-PLAIN-SMALL (Ref # 410)	410AA0600	1
GASKET,CHANGE MECHANISM (Ref # 11060)	11060-1830	1
GASKET,GENERATOR COVER (Ref # 11061)	11061-0273	1
GASKET,CLUTCH COVER (Ref # 11061A)	11061-0274	1
GUIDE-CHAIN (Ref # 12053)	12053-1215	1
SWITCH-COMP,NEUTRAL (Ref # 13151)	13151-1080	1
PLATE (Ref # 13270)	13270-1558	1
PLATE (Ref # 13270A)	13270-1559	1
PLATE (Ref # 13270B)	13270-1586	1
COVER-CHAIN (Ref # 14026)	14026-1232	1
COVER-CLUTCH (Ref # 14032)	14032-0102	1
COVER-COMP,GENERATOR (Ref # 14041)	14041-1118	1
COVER,CHANGE MECHANISM (Ref # 14090)	14090-1661	1
CAP-OIL FILLER (Ref # 16115)	16115-1062	1
GAUGE,OIL LEVEL (Ref # 52005)	52005-1009	1
BOLT,6X10 (Ref # 92002)	92002-1541	1
BOLT,6X8 (Ref # 92002A)	92002-1604	1
COLLAR (Ref # 92027)	92027-1858	1
BEARING-NEEDLE,HK1210 (Ref # 92046)	92046-1010	1
SEAL-OIL,TB12205.5 (Ref # 92049)	92049-1271	1
SEAL-OIL,TB13225.5 (Ref # 92051)	92051-005	1
RING-O,31.7X2.4 (Ref # 92055)	92055-049	1

2009 Vulcan® 500 LTD PARTS LIST

Engine Cover(s)

ITEM NAME	PART NUMBER	QUANTITY
RING-O (Ref # 92055A)	92055-091	1
RING-O,20X2 (Ref # 92055B)	92055-1146	1
GASKET,10.5X16X1 (Ref # 92065)	92065-058	1
PLUG (Ref # 92066)	92066-1397	1
PLUG (Ref # 92066A)	92066-1404	1
DAMPER (Ref # 92075)	92075-1681	1
DAMPER (Ref # 92160)	92160-1687	1
DAMPER (Ref # 92160A)	92160-1688	1
DAMPER (Ref # 92160B)	92160-1710	1