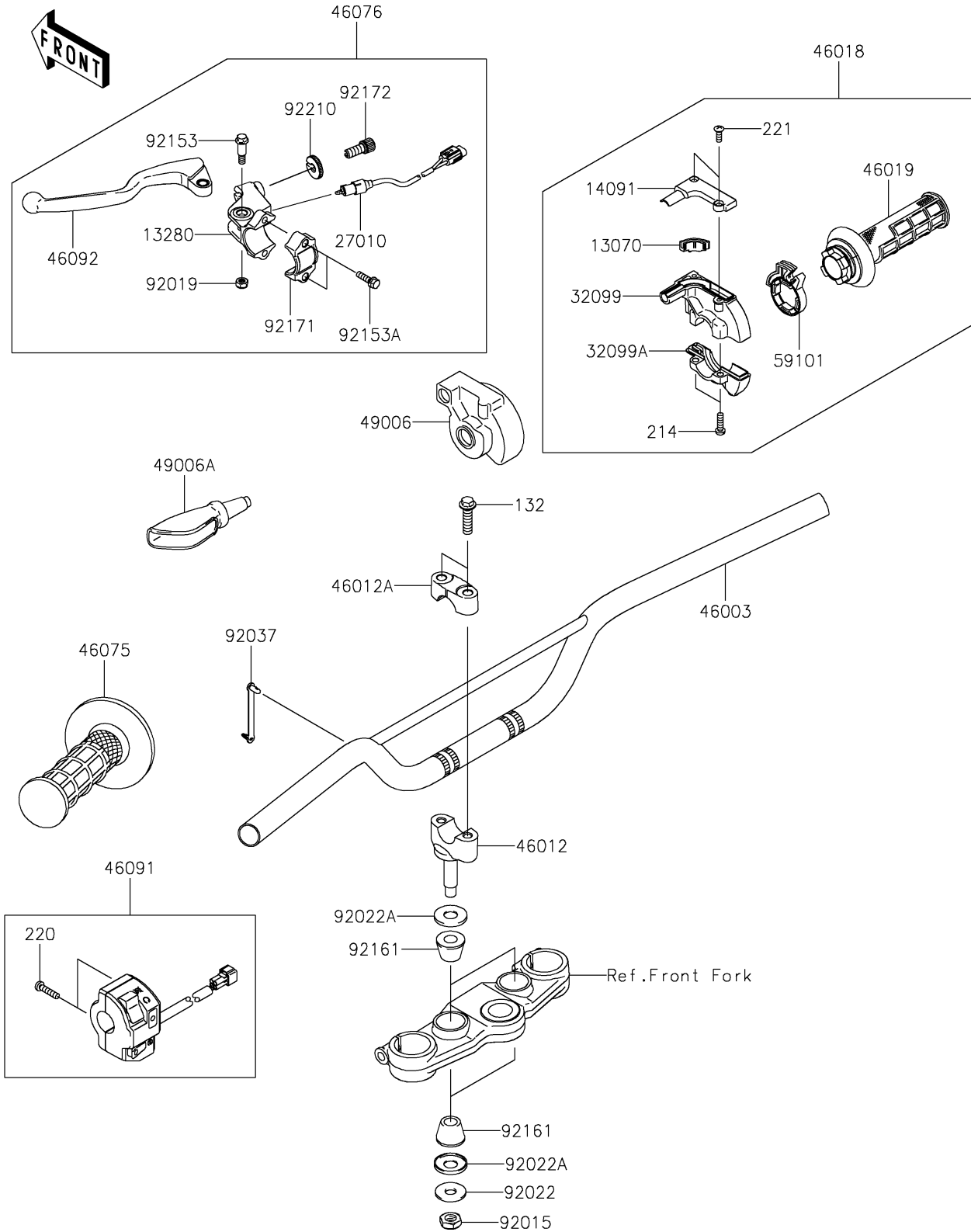


2019 KLX® 140G PARTS DIAGRAM

Handlebar

F2310



2019 KLX® 140G PARTS LIST

Handlebar

ITEM NAME	PART NUMBER	QUANTITY
GUIDE,THROTTLE (Ref # 13070)	13070-0083	1
BOLT-FLANGED-SMALL,8X30 (Ref # 132)	132BC0830	1
HOLDER,CLUTCH LEVER (Ref # 13280)	13280-0256	1
COVER,THROTTLE CASE,UPP (Ref # 14091)	14091-0873	1
SCREW-PAN+-,5X18 (Ref # 214)	214AB0518	1
SCREW-PAN-CROS,5X22 (Ref # 220)	220AB0522	1
SCREW-CSK-CROS,4X12 (Ref # 221)	221AB0412	1
SWITCH,CLUTCH (Ref # 27010)	27010-0071	1
CASE,THROTTLE,UPP (Ref # 32099)	32099-0037	1
CASE,THROTTLE,LWR (Ref # 32099A)	32099-0038	1
HANDLE,P.SILVER (Ref # 46003)	46003-0205-458	1
HOLDER-HANDLE,LWR,P.SILVER (Ref # 46012)	46012-0013-458	1
HOLDER-HANDLE,UPP,P.SILVER (Ref # 46012A)	46012-0023-458	1
GRIP-ASSY-THROTTLE (Ref # 46018)	46018-0073	1
GRIP-ASSY,THROTTLE (Ref # 46019)	46019-0023	1
GRIP,LH (Ref # 46075)	46075-0072	1
LEVER-ASSY-GRIP,CLUTCH (Ref # 46076)	46076-0049	1
HOUSING-ASSY-CONTROL,LH (Ref # 46091)	46091-0226	1
LEVER-GRIP,CLUTCH (Ref # 46092)	46092-0026	1
BOOT,THROTTLE CASE (Ref # 49006)	49006-0075	1
BOOT,LEVER HOLDER (Ref # 49006A)	49006-0080	1
REEL,THROTTLE (Ref # 59101)	59101-0005	1
NUT,LOCK,10MM (Ref # 92015)	92015-1962	1
NUT,LOCK,6MM (Ref # 92019)	92019-008	1
WASHER,10.2X28X2 (Ref # 92022)	92022-1088	1
WASHER (Ref # 92022A)	92022-1737	1
CLAMP,SPEED,L=58 (Ref # 92037)	92037-1163	1
BOLT,6MM (Ref # 92153)	92153-1897	1
BOLT,5X20 (Ref # 92153A)	92153-1898	1

2019 KLX® 140G PARTS LIST

Handlebar

ITEM NAME	PART NUMBER	QUANTITY
DAMPER,HANDLE HOLDER (Ref # 92161)	92161-0632	1
CLAMP,LEVER HOLDER (Ref # 92171)	92171-1671	1
SCREW,CABLE ADJUST,8MM (Ref # 92172)	92172-0330	1
NUT,CABLE ADJUST (Ref # 92210)	92210-0411	1