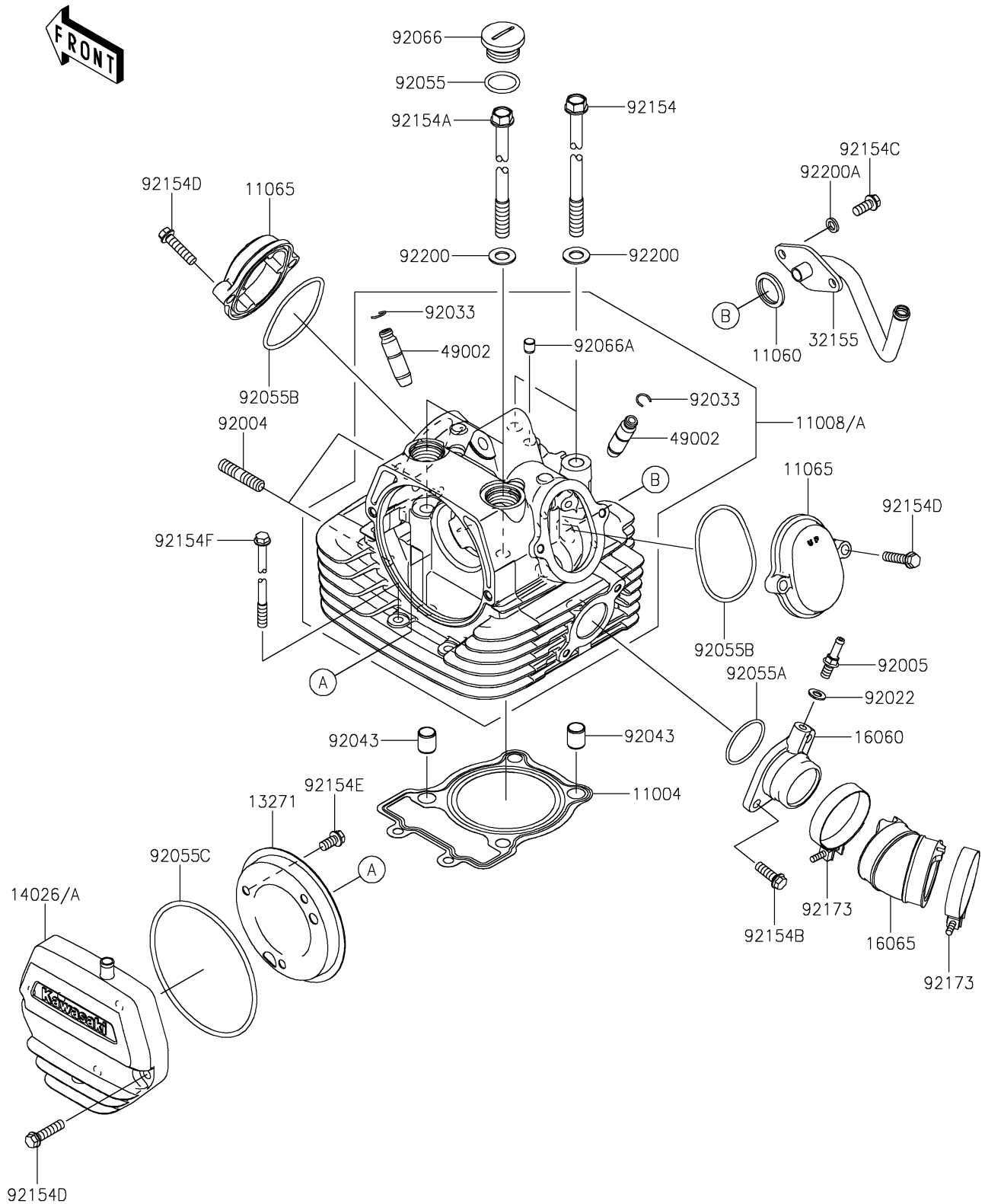


2019 W175 SE (Indonesia Only) PARTS DIAGRAM

Cylinder Head

E1111



2019 W175 SE (Indonesia Only) PARTS LIST

Cylinder Head

| ITEM NAME | PART NUMBER | QUANTITY |
|--|-------------|----------|
| GASKET-HEAD (Ref # 11004) | 11004-0780 | 1 |
| HEAD-COMP-CYLINDER (Ref # 11008A) | 11008-0911 | 1 |
| GASKET, REED VALVE (Ref # 11060) | 11060-1815 | 1 |
| CAP, ROCKER CASE (Ref # 11065) | 11065-0986 | 1 |
| PLATE, BREATHER (Ref # 13271) | 13271-0173 | 1 |
| COVER-CHAIN, CAM SPROCKET (Ref # 14026A) | 14026-0139 | 1 |
| PIPE-INTAKE (Ref # 16060) | 16060-0005 | 1 |
| HOLDER-CARBURETOR (Ref # 16065) | 16065-0133 | 1 |
| PIPE, HEAD-ASWV (Ref # 32155) | 32155-2618 | 1 |
| GUIDE-VALVE (Ref # 49002) | 49002-1140 | 1 |
| STUD, 8X22 (Ref # 92004) | 92004-1217 | 1 |
| FITTING (Ref # 92005) | 92005-0751 | 1 |
| WASHER, 6.1X12X1 (Ref # 92022) | 92022-077 | 1 |
| RING-SNAP (Ref # 92033) | 92033-0789 | 1 |
| PIN, 10.1X12X14 (Ref # 92043) | 92043-0929 | 1 |
| RING-O, 18.8X2.4 (Ref # 92055) | 92055-0023 | 1 |
| RING-O (Ref # 92055A) | 92055-0200 | 1 |
| RING-O, 53.6X2.6 (Ref # 92055B) | 92055-0750 | 1 |
| RING-O, 3.1X94.4 (Ref # 92055C) | 92055-0886 | 1 |
| PLUG (Ref # 92066) | 92066-0909 | 1 |
| PLUG, OIL LINE, 7.2X8 (Ref # 92066A) | 92066-1012 | 1 |
| BOLT, FLANGED, 9X228.5 (Ref # 92154) | 92154-2111 | 1 |
| BOLT, FLANGED, 9X188 (Ref # 92154A) | 92154-2112 | 1 |
| BOLT, FLANGED, 6X18 (Ref # 92154B) | 92154-2725 | 1 |
| BOLT, FLANGED, 6X14 (Ref # 92154C) | 92154-2751 | 1 |
| BOLT, FLANGED, 6X25 (Ref # 92154D) | 92154-2752 | 1 |
| BOLT, FLANGED, 6X12 (Ref # 92154E) | 92154-2753 | 1 |
| BOLT, 6X110 (Ref # 92154F) | 92154-3770 | 1 |
| CLAMP (Ref # 92173) | 92173-0991 | 1 |

2019 W175 SE (Indonesia Only) PARTS LIST

Cylinder Head

| ITEM NAME | PART NUMBER | QUANTITY |
|------------------------------------|-------------|----------|
| WASHER,9.5X18X1.2 (Ref # 92200) | 92200-1900 | 1 |
| WASHER,6.3X10.2X1.6 (Ref # 92200A) | 92200-1982 | 1 |