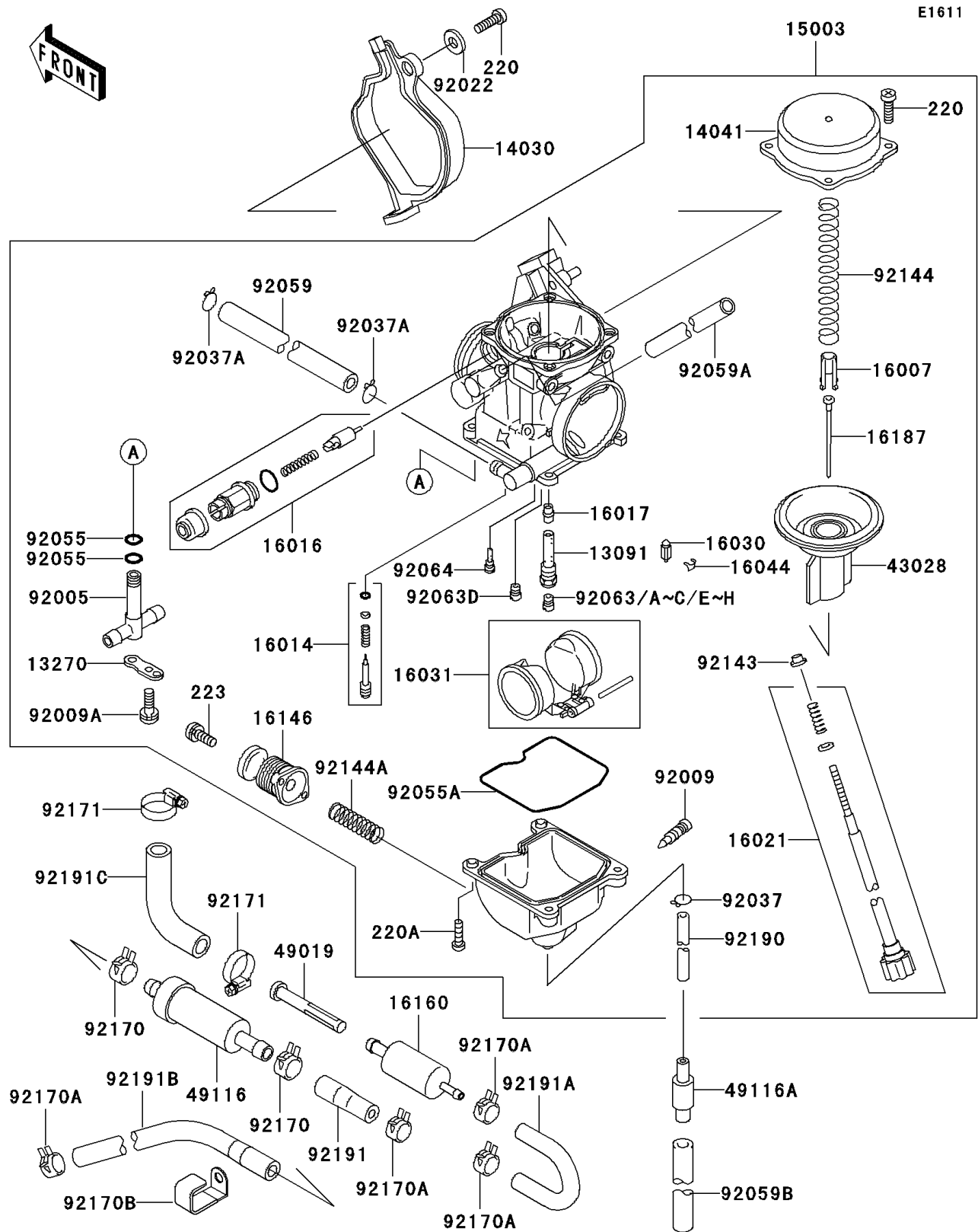


# 1999 Prairie 400 4X4 PARTS DIAGRAM

Carburetor



# 1999 Prairie 400 4X4 PARTS LIST

## Carburetor

| ITEM NAME                              | PART NUMBER | QUANTITY |
|--|-------------|----------|
| HOLDER,NEEDLE JET (Ref # 13091)        | 13091-1259  | 1        |
| PLATE,FITTING STAY (Ref # 13270)       | 13270-1063  | 1        |
| COVER-CARBURETOR (Ref # 14030)         | 14030-1054  | 1        |
| COVER-COMP,MIXING,INSIDE (Ref # 14041) | 14041-1061  | 1        |
| CARBURETOR-ASSY (Ref # 15003)          | 15003-1446  | 1        |
| SEAT-SPRING,VALVE (Ref # 16007)        | 16007-1134  | 1        |
| SCREW-PILOT AIR (Ref # 16014)          | 16014-1081  | 1        |
| PLUNGER,STARTER (Ref # 16016)          | 16016-1101  | 1        |
| JET-NEEDLE,#6 (Ref # 16017)            | 16017-1400  | 1        |
| SCREW-THROTTLE STOP (Ref # 16021)      | 16021-1213  | 1        |
| VALVE-FLOAT (Ref # 16030)              | 16030-1007  | 1        |
| FLOAT (Ref # 16031)                    | 16031-1077  | 1        |
| CLAMP,FLOAT VALVE (Ref # 16044)        | 16044-007   | 1        |
| COVER-ASSY,PUMP (Ref # 16146)          | 16146-1129  | 1        |
| BODY,FILTER (Ref # 16160)              | 16160-1151  | 1        |
| NEEDLE-JET,N6OI (Ref # 16187)          | 16187-1092  | 1        |
| DIAPHRAGM,VALVE (Ref # 43028)          | 43028-1081  | 1        |
| FILTER-WATER (Ref # 49019)             | 49019-1068  | 1        |
| VALVE-ASSY (Ref # 49116)               | 49116-1081  | 1        |
| VALVE-ASSY (Ref # 49116A)              | 49116-1126  | 1        |
| FITTING (Ref # 92005)                  | 92005-1235  | 1        |
| SCREW,DRAIN,6X0.75 (Ref # 92009)       | 92009-1551  | 1        |
| SCREW (Ref # 92009A)                   | 92009-1713  | 1        |
| WASHER,5.2X13X1 (Ref # 92022)          | 92022-1380  | 1        |
| CLAMP,TUBE (Ref # 92037)               | 92037-1201  | 1        |
| CLAMP,TUBE (Ref # 92037A)              | 92037-1531  | 2        |
| RING-O,4.5X1.5 (Ref # 92055)           | 92055-1427  | 2        |
| RING-O,FLOAT CHAMBER (Ref # 92055A)    | 92055-1518  | 1        |
| TUBE,6.5X11.5X200 (Ref # 92059)        | 92059-1538  | 1        |

# 1999 Prairie 400 4X4 PARTS LIST

## Carburetor

| ITEM NAME                          | PART NUMBER | QUANTITY |
|------------------------------------|-------------|----------|
| TUBE,6.5X9.5X260 (Ref # 92059A)    | 92059-1598  | 1        |
| TUBE,7X10X100 (Ref # 92059B)       | 92059-1736  | 1        |
| JET-MAIN,#140 (Ref # 92063)        | 92063-1013  | AR       |
| JET-MAIN,#138 (Ref # 92063A)       | 92063-1015  | AR       |
| JET-MAIN,#142 (Ref # 92063B)       | 92063-1016  | AR       |
| JET-MAIN,#145 (Ref # 92063C)       | 92063-1017  | AR       |
| JET-MAIN,#85 (Ref # 92063D)        | 92063-1023  | 1        |
| SCREW-PAN-CROS,4X8 (Ref # 220)     | 220B0408    | 5        |
| SCREW-PAN-CROS,4X14 (Ref # 220A)   | 220D0414    | 4        |
| SCREW-PAN-WS-CROS,4X12 (Ref # 223) | 223C0412    | 2        |
| JET-MAIN,#148 (Ref # 92063E)       | 92063-1324  | AR       |
| JET-MAIN,#150 (Ref # 92063F)       | 92063-1330  | 1        |
| JET-MAIN,#152 (Ref # 92063G)       | 92063-1331  | AR       |
| JET-MAIN,#155 (Ref # 92063H)       | 92063-1332  | AR       |
| JET-PILOT,#35 (Ref # 92064)        | 92064-1101  | 1        |
| COLLAR (Ref # 92143)               | 92143-1589  | 1        |
| SPRING,VACUUM VALVE (Ref # 92144)  | 92144-1066  | 1        |
| SPRING,PUMP (Ref # 92144A)         | 92144-1672  | 1        |
| CLAMP (Ref # 92170)                | 92170-1492  | 2        |
| CLAMP (Ref # 92170A)               | 92170-1493  | 4        |
| CLAMP (Ref # 92170B)               | 92170-1863  | 1        |
| CLAMP (Ref # 92171)                | 92171-1158  | 2        |
| TUBE,4.5X8X330 (Ref # 92190)       | 92190-1557  | 1        |
| TUBE (Ref # 92191)                 | 92191-1427  | 1        |
| TUBE (Ref # 92191A)                | 92191-1428  | 1        |
| TUBE (Ref # 92191B)                | 92191-1429  | 1        |
| TUBE (Ref # 92191C)                | 92191-1430  | 1        |