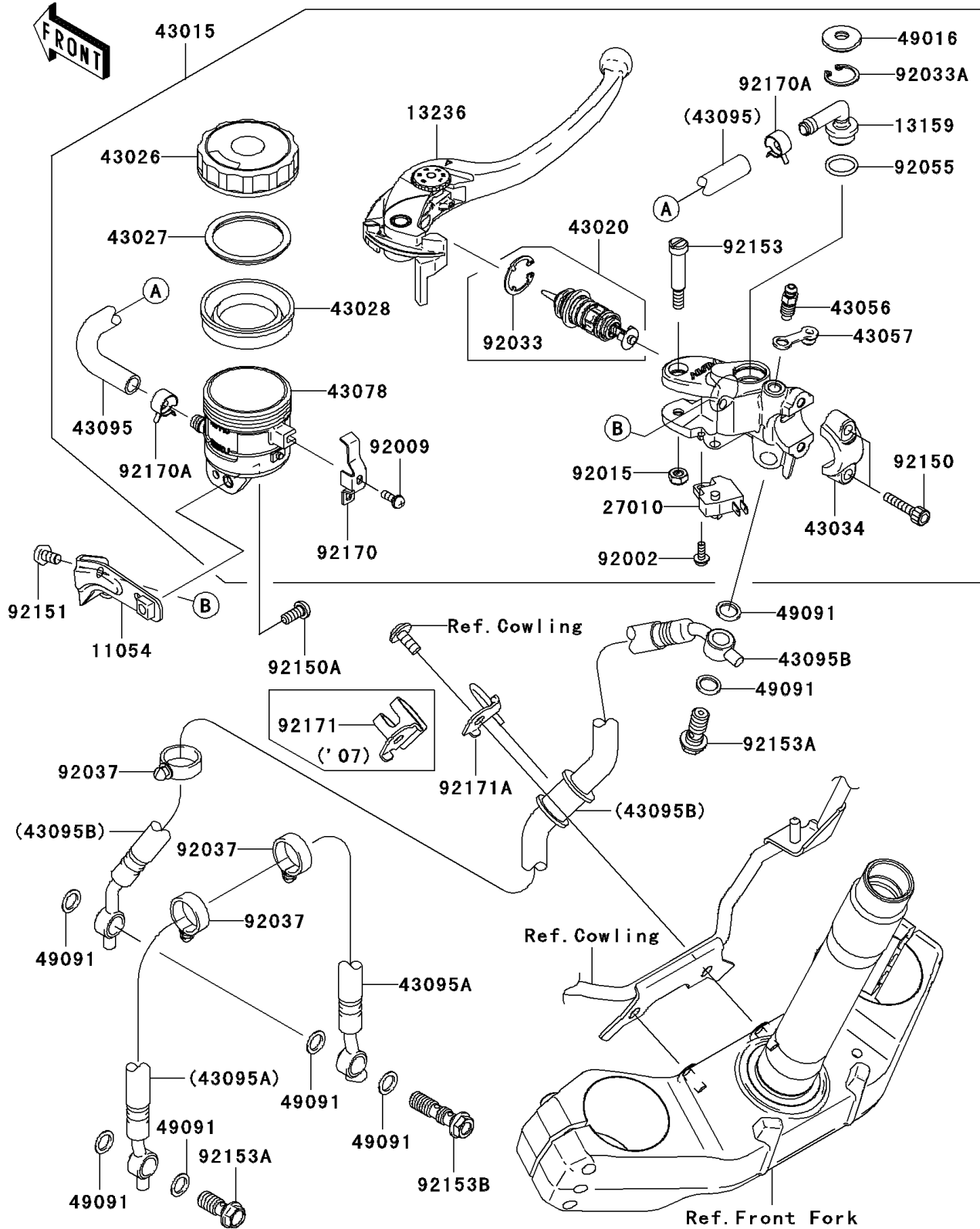


2008 Z1000 PARTS DIAGRAM

Front Master Cylinder

F2291



2008 Z1000 PARTS LIST

Front Master Cylinder

ITEM NAME	PART NUMBER	QUANTITY
BRACKET (Ref # 11054)	11054-1912	1
CONNECTOR (Ref # 13159)	13159-1061	1
LEVER-COMP,FRONT BRAKE (Ref # 13236)	13236-0139	1
SWITCH,BRAKE (Ref # 27010)	27010-0025	1
CYLINDER-ASSY-MASTER,FR (Ref # 43015)	43015-0108	1
PISTON-COMP-BRAKE (Ref # 43020)	43020-0003	1
CAP-BRAKE (Ref # 43026)	43026-1051	1
PLATE-DIAPHRAGM (Ref # 43027)	43027-1051	1
DIAPHRAGM,MASTER CYLINDER (Ref # 43028)	43028-1057	1
HOLDER-BRAKE,MASTER CYLINDER (Ref # 43034)	43034-1163	1
BREATHER-BRAKE (Ref # 43056)	43056-1056	1
CAP-BREATHER (Ref # 43057)	43057-1001	1
RESERVOIR (Ref # 43078)	43078-1099	1
HOSE-BRAKE,FR MASTER CYLINDER (Ref # 43095)	43095-0040	1
HOSE-BRAKE,FR (Ref # 43095A)	43095-0223	1
HOSE-BRAKE,FR (Ref # 43095B)	43095-0280	1
COVER-SEAL (Ref # 49016)	49016-1147	1
WASHER-SEAL,10.1X14.5X1.5 (Ref # 49091)	49091-0001	7
BOLT,SCREW,4X12 (Ref # 92002)	92002-1323	1
SCREW (Ref # 92009)	92009-1570	1
NUT,FLANGED,6MM,BLACK (Ref # 92015)	92015-1233	1
RING-SNAP (Ref # 92033)	92033-0034	1
RING-SNAP,20.5MM (Ref # 92033A)	92033-1186	1
CLAMP,HOSE (Ref # 92037)	92037-1827	3
RING-O,MASTER CYLINDER (Ref # 92055)	92055-1251	1
BOLT (Ref # 92150)	92150-1328	2
BOLT,SOCKET,6X14 (Ref # 92150A)	92150-1836	1
BOLT,SOCKET,6X10 (Ref # 92151)	92151-1449	1
BOLT,LEVER (Ref # 92153)	92153-0868	1

2008 Z1000 PARTS LIST

Front Master Cylinder

ITEM NAME	PART NUMBER	QUANTITY
BOLT,OIL,L=23 (Ref # 92153A)	92153-1419	2
BOLT,OIL,L=37 (Ref # 92153B)	92153-1438	1
CLAMP (Ref # 92170)	92170-1090	1
CLAMP,HOSE (Ref # 92170A)	92170-1091	2
CLAMP,BRAKE HOSE (Ref # 92171A)	92171-1667	1