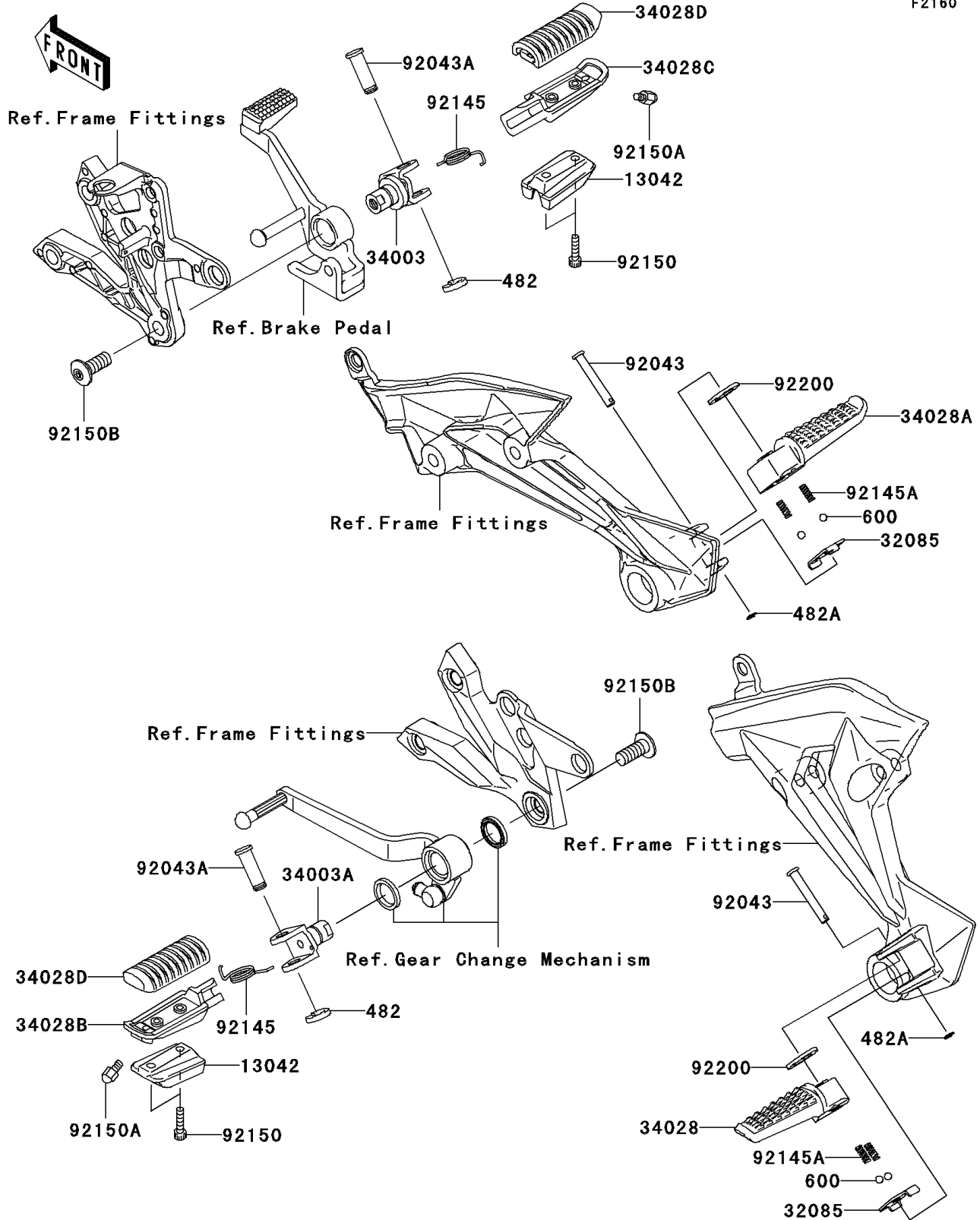


2008 Z1000 PARTS DIAGRAM

Footrests

F2160



2008 Z1000 PARTS LIST

Footrests

ITEM NAME	PART NUMBER	QUANTITY
CIRCLIP-TYPE-E,10MM (Ref # 482)	482L0100	2
CIRCLIP-TYPE-E,5MM (Ref # 482A)	482L5000	2
BALL-STEEL,1/4" (Ref # 600)	600A0800	4
WEIGHT,STEP (Ref # 13042)	13042-0022	2
STOPPER,REAR STEP (Ref # 32085)	32085-0047	2
HOLDER-STEP,FR,RH (Ref # 34003)	34003-0025	1
HOLDER-STEP,FR,LH (Ref # 34003A)	34003-1474	1
STEP,RR,LH (Ref # 34028)	34028-0004	1
STEP,RR,RH (Ref # 34028A)	34028-0005	1
STEP,FR,LH (Ref # 34028B)	34028-1428	1
STEP,FR,RH (Ref # 34028C)	34028-1429	1
STEP,FR,RUBBER (Ref # 34028D)	34028-1430	2
PIN,6X40 (Ref # 92043)	92043-1595	2
PIN,12X37 (Ref # 92043A)	92043-1641	2
SPRING,STEP RETURN (Ref # 92145)	92145-0360	2
SPRING (Ref # 92145A)	92145-1319	4
BOLT,SOCKET,5X20 (Ref # 92150)	92150-1019	4
BOLT,BANK SENSOR (Ref # 92150A)	92150-1114	2
BOLT,SOCKET,10X25 (Ref # 92150B)	92150-1268	2
WASHER,16X26X2.3 (Ref # 92200)	92200-0043	2