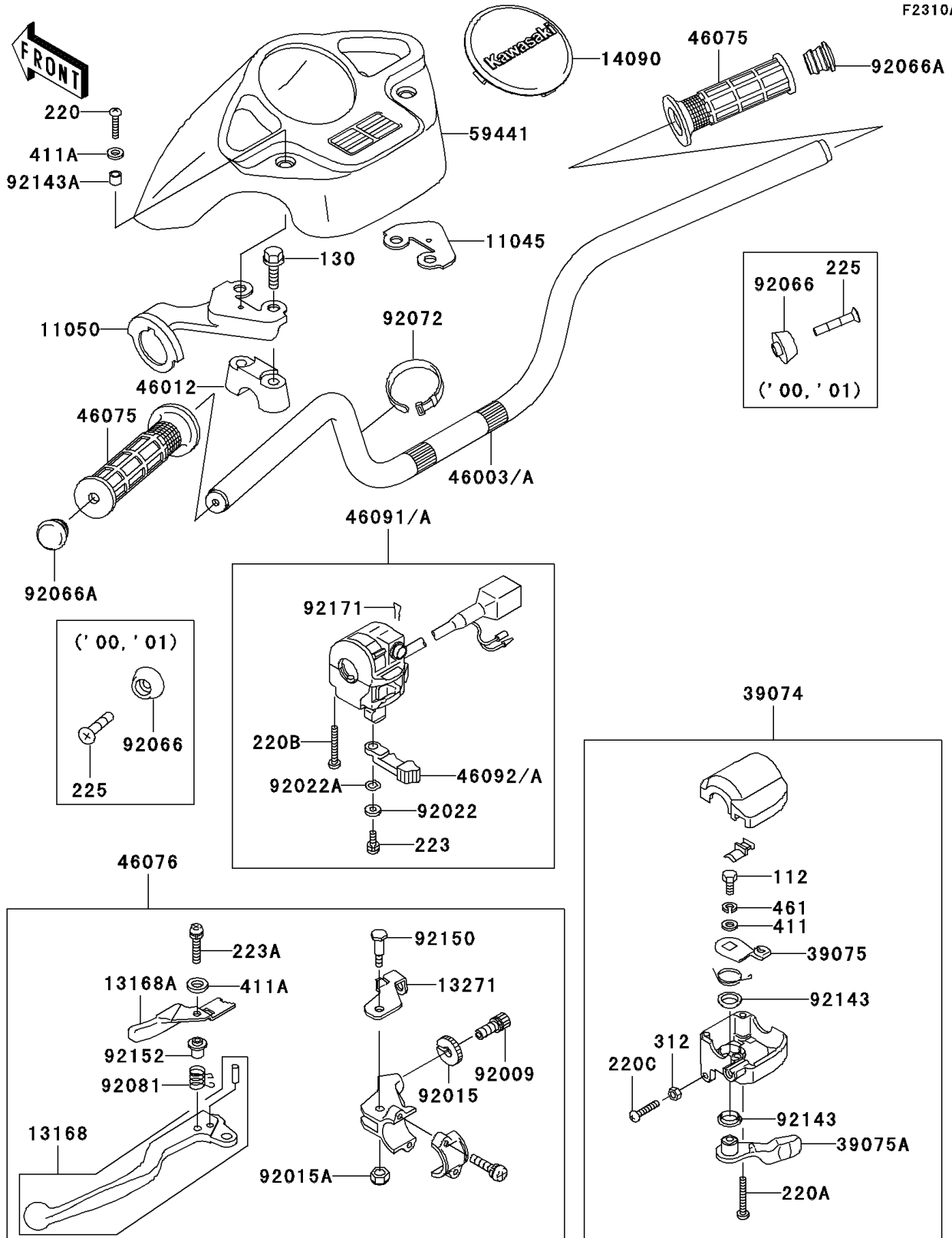


2001 Prairie 300 PARTS DIAGRAM

Handlebar(B2/B3/B4)

F2310A



2001 Prairie 300 PARTS LIST

Handlebar(B2/B3/B4)

| ITEM NAME | PART NUMBER | QUANTITY |
|---|---------------|----------|
| BOLT-UPSET,6X14 (Ref # 112) | 112D0614 | 1 |
| BOLT-FLANGED,8X60 (Ref # 130) | 130P0860 | 1 |
| SCREW-PAN-CROS,4X20 (Ref # 220) | 220C0420 | 1 |
| SCREW-PAN-CROS,5X30 (Ref # 220A) | 220C0530 | 1 |
| BRACKET,HANDLE COVER (Ref # 11045) | 11045-1925 | 1 |
| BRACKET,HANDLE COVER,LH (Ref # 11050) | 11050-1727 | 1 |
| LEVER,LH (Ref # 13168) | 13168-1672 | 1 |
| LEVER,LOCK (Ref # 13168A) | 13168-1673 | 1 |
| PLATE,LOCK (Ref # 13271) | 13271-1259 | 1 |
| LEVER-ASSY-THROTTLE (Ref # 39074) | 39074-1055 | 1 |
| LEVER-THROTTLE,ARM (Ref # 39075) | 39075-1054 | 1 |
| LEVER-THROTTLE (Ref # 39075A) | 39075-1059 | 1 |
| HANDLE (Ref # 46003) | 46003-1452 | 1 |
| HOLDER-HANDLE (Ref # 46012) | 46012-1168 | 1 |
| GRIP (Ref # 46075) | 46075-1056 | 1 |
| LEVER-ASSY-GRIP,LH (Ref # 46076) | 46076-1224 | 1 |
| HOUSING-ASSY-CONTROL,LH (Ref # 46091) | 46091-1799 | 1 |
| LEVER-GRIP,CHOKE (Ref # 46092) | 46092-1205 | 1 |
| COVER-HANDLE,F.BLACK (Ref # 59441) | 59441-1135-6Z | 1 |
| SCREW,CABLE ADJUST,8MM (Ref # 92009) | 92009-1435 | 1 |
| NUT,CABLE ADJUST LOCK,8MM (Ref # 92015) | 92015-1596 | 1 |
| NUT (Ref # 92015A) | 92015-1829 | 1 |
| WASHER,5MM (Ref # 92022) | 92022-1837 | 1 |
| WASHER,WAVE,5MM (Ref # 92022A) | 92022-1838 | 1 |
| PLUG,HANDLE (Ref # 92066) | 92066-1191 | 1 |
| SPRING,LOCK RETURN (Ref # 92081) | 92081-1358 | 1 |
| COLLAR (Ref # 92143) | 92143-1138 | 1 |
| COLLAR,5.6X8X7 (Ref # 92143A) | 92143-1336 | 1 |
| BOLT (Ref # 92150) | 92150-1420 | 1 |

2001 Prairie 300 PARTS LIST

Handlebar(B2/B3/B4)

| ITEM NAME | PART NUMBER | QUANTITY |
|--|---------------|----------|
| COLLAR (Ref # 92152) | 92152-1176 | 1 |
| CLAMP,CLIP (Ref # 92171) | 92171-1095 | 1 |
| SCREW-PAN-CROS,5X35 (Ref # 220B) | 220C0535 | 1 |
| SCREW-PAN-CROS,6X30,BLACK (Ref # 220C) | 220C0630 | 1 |
| SCREW-PAN-WS-CROS,5X12 (Ref # 223) | 223C0512 | 1 |
| SCREW-PAN-WS-CROS (Ref # 223A) | 223C0520 | 1 |
| SCREW-PAN-WSP-CROS,6X20 (Ref # 225) | 225C0620 | 1 |
| NUT-HEX,6MM,BLACK (Ref # 312) | 312C0600 | 1 |
| WASHER-PLAIN,6MM (Ref # 411) | 411E0600 | 1 |
| WASHER-PLAIN,5MM,BLACK (Ref # 411A) | 411F0500 | 1 |
| WASHER-SPRING (Ref # 461) | 461L0600 | 1 |
| COVER,BLIND CAP,F.BLACK (Ref # 14090) | 14090-1945-6Z | 1 |
| BAND,L=149 (Ref # 92072) | 92072-031 | 2 |