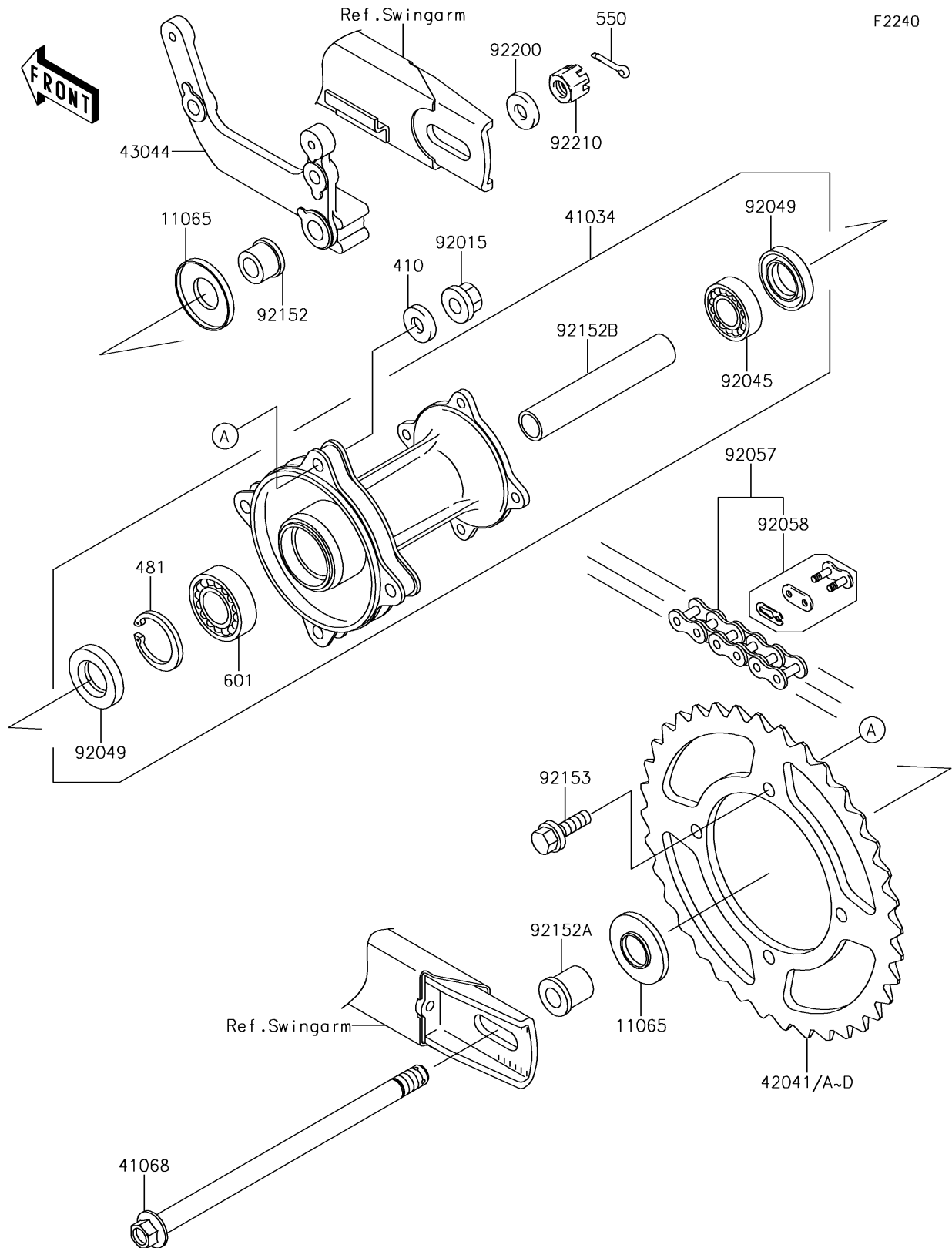


2016 KX™65 PARTS DIAGRAM

Rear Hub



2016 KX™65 PARTS LIST

Rear Hub

| ITEM NAME | PART NUMBER | QUANTITY |
|---|-------------|----------|
| CAP (Ref # 11065) | 11065-1137 | 1 |
| WASHER-PLAIN-SMALL,8MM (Ref # 410) | 410AA0800 | 1 |
| DRUM-ASSY,REAR BRAKE (Ref # 41034) | 41034-1303 | 1 |
| AXLE,RR (Ref # 41068) | 41068-1419 | 1 |
| SPROCKET-HUB,45T (Ref # 42041) | 42041-1526 | 1 |
| SPROCKET-HUB,46T (Ref # 42041A) | 42041-1527 | 1 |
| SPROCKET-HUB,47T (Ref # 42041B) | 42041-1528 | 1 |
| SPROCKET-HUB,48T (Ref # 42041C) | 42041-1529 | 1 |
| SPROCKET-HUB,49T (Ref # 42041D) | 42041-1549 | 1 |
| HOLDER-COMP-CALIPER,RR (Ref # 43044) | 43044-1127 | 1 |
| CIRCLIP-TYPE-C,37MM (Ref # 481) | 481J3700 | 1 |
| PIN-COTTER,3.0X25 (Ref # 550) | 550AA3025 | 1 |
| BEARING-BALL,#6201UUC3 (Ref # 601) | 601B6301UU | 1 |
| NUT,8MM (Ref # 92015) | 92015-1432 | 1 |
| BEARING-BALL,TMB201LLUC3/2A (Ref # 92045) | 92045-1062 | 1 |
| SEAL-OIL,TC20376.5 (Ref # 92049) | 92049-1257 | 1 |
| CHAIN,DRIVE,DID420MBK1X110L (Ref # 92057) | 92057-1504 | 1 |
| JOINT-CHAIN,DRIVE (Ref # 92058) | 92058-1073 | 1 |
| COLLAR,AXLE,L=15.5 (Ref # 92152) | 92152-1196 | 1 |
| COLLAR,RR AXLE,L=22 (Ref # 92152A) | 92152-1198 | 1 |
| COLLAR,RR BRAKE DRUM,L=89 (Ref # 92152B) | 92152-1199 | 1 |
| BOLT,FLANGED,8X28 (Ref # 92153) | 92153-1101 | 1 |
| WASHER,12.3X23X2.3 (Ref # 92200) | 92200-1004 | 1 |
| NUT,12MM (Ref # 92210) | 92210-7501 | 1 |