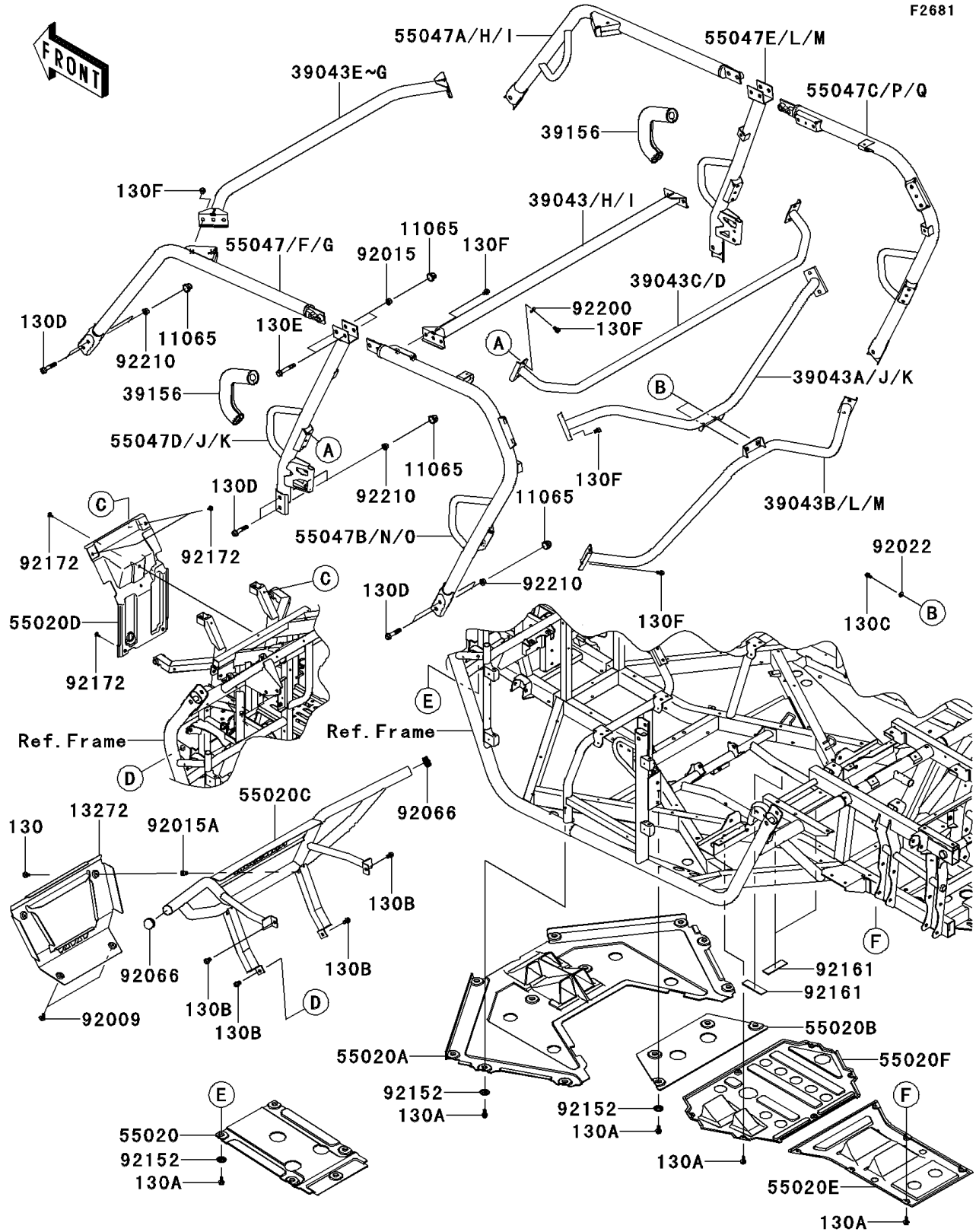


2013 TERYX4™ 750 4x4 (Canadian) PARTS DIAGRAM

Guards/Cab Frame

F2681



2013 TERYX4™ 750 4x4 (Canadian) PARTS LIST

Guards/Cab Frame

| ITEM NAME | PART NUMBER | QUANTITY |
|---|----------------|----------|
| CAP (Ref # 11065) | 11065-0751 | 1 |
| PLATE,T.BLACK (Ref # 13272) | 13272-0994-388 | 1 |
| CROSSMEMBER-COMP,CNT,LWR,RED (Ref # 39043C) | 39043-0325-16I | 1 |
| CROSSMEMBER-COMP,FR,UPP,RED (Ref # 39043F) | 39043-0328-16I | 1 |
| CROSSMEMBER-COMP,FR,UPP,T.BLK (Ref # 39043G) | 39043-0328-388 | 1 |
| CROSSMEMBER-COMP,CNT,UPP,RED (Ref # 39043H) | 39043-0329-16I | 1 |
| CROSSMEMBER-COMP,CNT,UPP,T.BLK (Ref # 39043I) | 39043-0329-388 | 1 |
| CROSSMEMBER-COMP,RR,UPP,RED (Ref # 39043J) | 39043-0330-16I | 1 |
| CROSSMEMBER-COMP,RR,UPP,T.BLK (Ref # 39043K) | 39043-0330-388 | 1 |
| CROSSMEMBER-COMP,RR,LWR,RED (Ref # 39043L) | 39043-0331-16I | 1 |
| CROSSMEMBER-COMP,RR,LWR,T.BLK (Ref # 39043M) | 39043-0331-388 | 1 |
| PAD (Ref # 39156) | 39156-0764 | 1 |
| GUARD,SKID,FR (Ref # 55020) | 55020-0723 | 1 |
| GUARD,SKID,FR MIDDLE (Ref # 55020A) | 55020-0724 | 1 |
| GUARD,SKID,CNT,FR (Ref # 55020B) | 55020-0726 | 1 |
| GUARD,FRONT,T.BLACK (Ref # 55020C) | 55020-0727-388 | 1 |
| GUARD,FR FRAME (Ref # 55020D) | 55020-0741 | 1 |
| GUARD,SKID,RR (Ref # 55020E) | 55020-0812 | 1 |
| GUARD,SKID,CNT (Ref # 55020F) | 55020-0815 | 1 |
| BAR-COMP,A-PILLAR,LH,T.S.RED (Ref # 55047F) | 55047-0334-16I | 1 |
| BAR-COMP,A-PILLAR,LH,T.BLACK (Ref # 55047G) | 55047-0334-388 | 1 |
| BAR-COMP,A-PILLAR,RH,T.S.RED (Ref # 55047H) | 55047-0335-16I | 1 |
| BOLT-FLANGED,6X14 (Ref # 130) | 130AB0614 | 1 |
| BOLT-FLANGED,6X14 (Ref # 130A) | 130BA0614 | 1 |
| BOLT-FLANGED,10X16 (Ref # 130B) | 130BA1016 | 1 |
| BOLT-FLANGED,8X16 (Ref # 130C) | 130BB0816 | 1 |
| BOLT-FLANGED,12X60 (Ref # 130D) | 130BB1260 | 1 |
| BOLT-FLANGED,12X75 (Ref # 130E) | 130BB1275 | 1 |
| BOLT-FLANGED,10X14 (Ref # 130F) | 130CB1014 | 1 |

2013 TERYX4™ 750 4x4 (Canadian) PARTS LIST

Guards/Cab Frame

| ITEM NAME | PART NUMBER | QUANTITY |
|---|----------------|----------|
| BAR-COMP,A-PILLAR,RH,T.BLACK (Ref # 55047I) | 55047-0335-388 | 1 |
| BAR-COMP,B-PILLAR,LH,T.S.RED (Ref # 55047J) | 55047-0336-16I | 1 |
| BAR-COMP,B-PILLAR,LH,T.BLACK (Ref # 55047K) | 55047-0336-388 | 1 |
| BAR-COMP,B-PILLAR,RH,T.S.RED (Ref # 55047L) | 55047-0337-16I | 1 |
| BAR-COMP,B-PILLAR,RH,T.BLACK (Ref # 55047M) | 55047-0337-388 | 1 |
| BAR-COMP,C-PILLAR,LH,T.S.RED (Ref # 55047N) | 55047-0338-16I | 1 |
| BAR-COMP,C-PILLAR,LH,T.BLACK (Ref # 55047O) | 55047-0338-388 | 1 |
| BAR-COMP,C-PILLAR,RH,T.S.RED (Ref # 55047P) | 55047-0339-16I | 1 |
| BAR-COMP,C-PILLAR,RH,T.BLACK (Ref # 55047Q) | 55047-0339-388 | 1 |
| SCREW,TAPPING,6X16 (Ref # 92009) | 92009-1166 | 1 |
| NUT,LOCK,FLANGED,12MM (Ref # 92015) | 92015-1433 | 1 |
| NUT,POP,6MM,L=15 (Ref # 92015A) | 92015-1791 | 1 |
| WASHER,8.5X20X1.6,BLACK (Ref # 92022) | 92022-1317 | 1 |
| PLUG (Ref # 92066) | 92066-7503 | 1 |
| COLLAR (Ref # 92152) | 92152-0784 | 1 |
| DAMPER,30X100X3.2 (Ref # 92161) | 92161-1457 | 1 |
| SCREW,6X16 (Ref # 92172) | 92172-0711 | 1 |
| WASHER,10.2X23X2.5 (Ref # 92200) | 92200-7506 | 1 |
| NUT,12MM (Ref # 92210) | 92210-0603 | 1 |