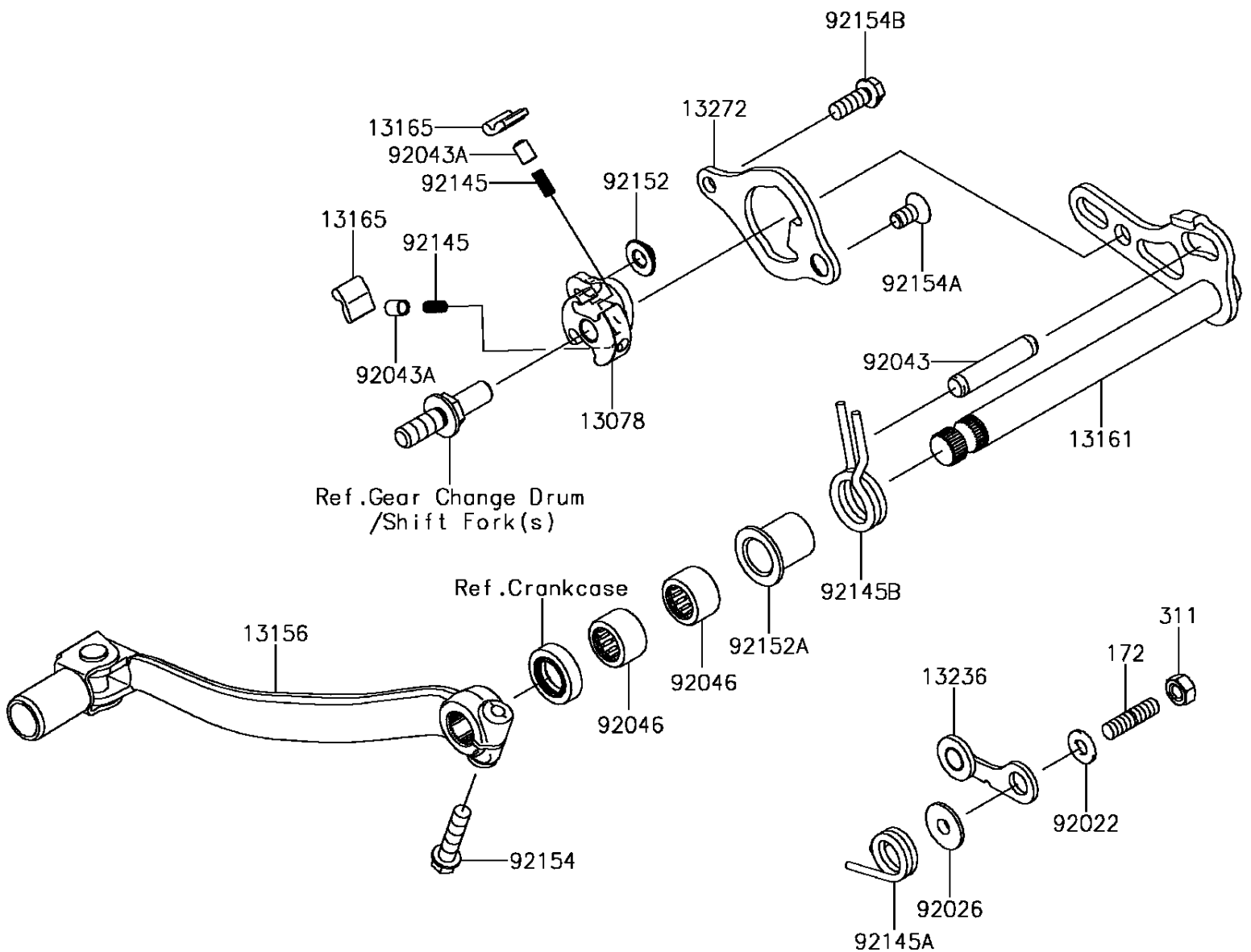


2017 KX™250F PARTS DIAGRAM

Gear Change Mechanism

E1370



2017 KX™250F PARTS LIST

Gear Change Mechanism

| ITEM NAME | PART NUMBER | QUANTITY |
|---------------------------------------|-------------|----------|
| RATCHET (Ref # 13078) | 13078-0029 | 1 |
| LEVER-CHANGE,PEDAL (Ref # 13156) | 13156-0124 | 1 |
| LEVER-COMP-CHANGE SHAFT (Ref # 13161) | 13161-0590 | 1 |
| PAWL (Ref # 13165) | 13165-0018 | 1 |
| LEVER-COMP,POSITION (Ref # 13236) | 13236-0161 | 1 |
| PLATE,PAWL GUIDE (Ref # 13272) | 13272-2127 | 1 |
| BOLT-STUD,6X12 (Ref # 172) | 172BA0612 | 1 |
| NUT-HEX,6MM (Ref # 311) | 311BA0600 | 1 |
| WASHER,6X12.8X1.2 (Ref # 92022) | 92022-1827 | 1 |
| SPACER (Ref # 92026) | 92026-1217 | 1 |
| PIN,8X39 (Ref # 92043) | 92043-0017 | 1 |
| PIN,PLUNGER (Ref # 92043A) | 92043-1676 | 1 |
| BEARING-NEEDLE,HK1312 (Ref # 92046) | 92046-1148 | 1 |
| SPRING (Ref # 92145) | 92145-0453 | 1 |
| SPRING,POSITION (Ref # 92145A) | 92145-0843 | 1 |
| SPRING,RETURN (Ref # 92145B) | 92145-1725 | 1 |
| COLLAR (Ref # 92152) | 92152-1414 | 1 |
| COLLAR (Ref # 92152A) | 92152-2208 | 1 |
| BOLT,FLANGED,6X25 (Ref # 92154) | 92154-0520 | 1 |
| BOLT,TORX (Ref # 92154A) | 92154-1621 | 1 |
| BOLT,FLANGED,6X16 (Ref # 92154B) | 92154-2096 | 1 |