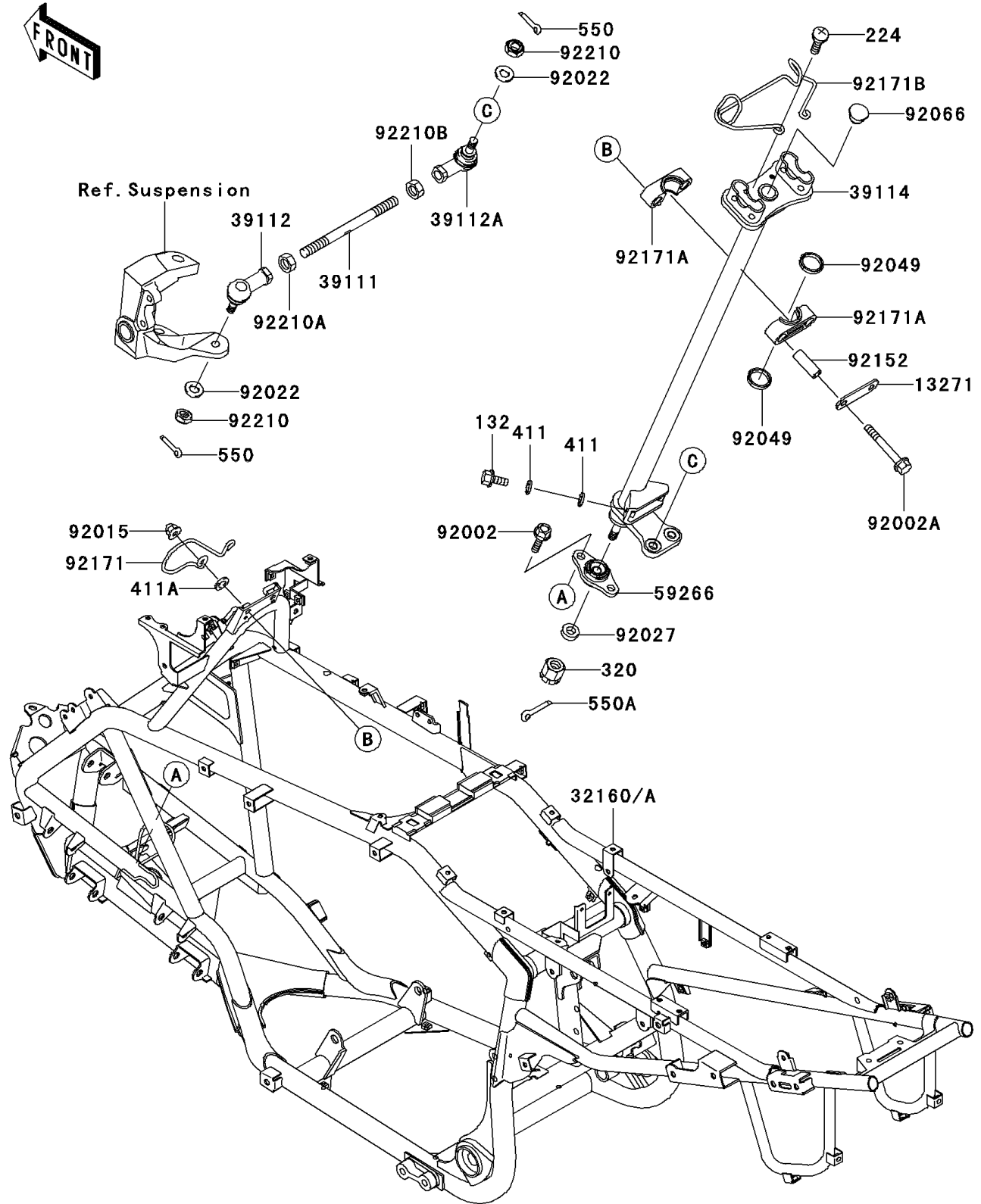


2004 KFX700 V Force PARTS DIAGRAM

Frame

F2120



2004 KFX700 V Force PARTS LIST

Frame

ITEM NAME	PART NUMBER	QUANTITY
BOLT-FLANGED-SMALL (Ref # 132)	132J0616	2
SCREW-PAN-WP-CROS (Ref # 224)	224C0614	2
NUT-CASTLE (Ref # 320)	320H1000	1
WASHER-PLAIN,6MM (Ref # 411)	411B0600	4
WASHER-PLAIN,8MM,BLACK (Ref # 411A)	411F0800	2
PIN-COTTER,2.0X15 (Ref # 550)	550D2015	4
PIN-COTTER,2.5X18 (Ref # 550A)	550D2518	1
PLATE (Ref # 13271)	13271-1887	1
FRAME-COMP,G.GRAY (Ref # 32160A)	32160-1800-HN	1
ROD-TIE (Ref # 39111)	39111-1180	2
RODEND-TIE,RIGHT HANDED (Ref # 39112)	39112-1087	2
RODEND-TIE,LEFT HANDED (Ref # 39112A)	39112-1088	2
SHAFT-COMP-STRG (Ref # 39114)	39114-0001	1
JOINT-BALL (Ref # 59266)	59266-0001	1
BOLT,8X20 (Ref # 92002)	92002-1250	2
BOLT,FLANGED,8X70 (Ref # 92002A)	92002-1349	2
NUT,CAP,8MM,BLACK (Ref # 92015)	92015-1174	2
WASHER,10.2X20X1.5 (Ref # 92022)	92022-3742	4
COLLAR,10X21.3X7 (Ref # 92027)	92027-1817	1
SEAL-OIL,SR25.4X31X3.8 (Ref # 92049)	92049-1611	2
PLUG (Ref # 92066)	92066-1220	1
COLLAR,9.1X13.9X39.2 (Ref # 92152)	92152-1456	2
CLAMP,CABLE (Ref # 92171)	92171-0066	1
CLAMP,STEERING SHAFT (Ref # 92171A)	92171-1542	2
CLAMP,CABLE&HARNESS (Ref # 92171B)	92171-1543	1
NUT,LOCK,10MM (Ref # 92210)	92210-1184	4
NUT,RIGHT HANDED (Ref # 92210A)	92210-1385	2
NUT,LEFT HANDED (Ref # 92210B)	92210-1386	2