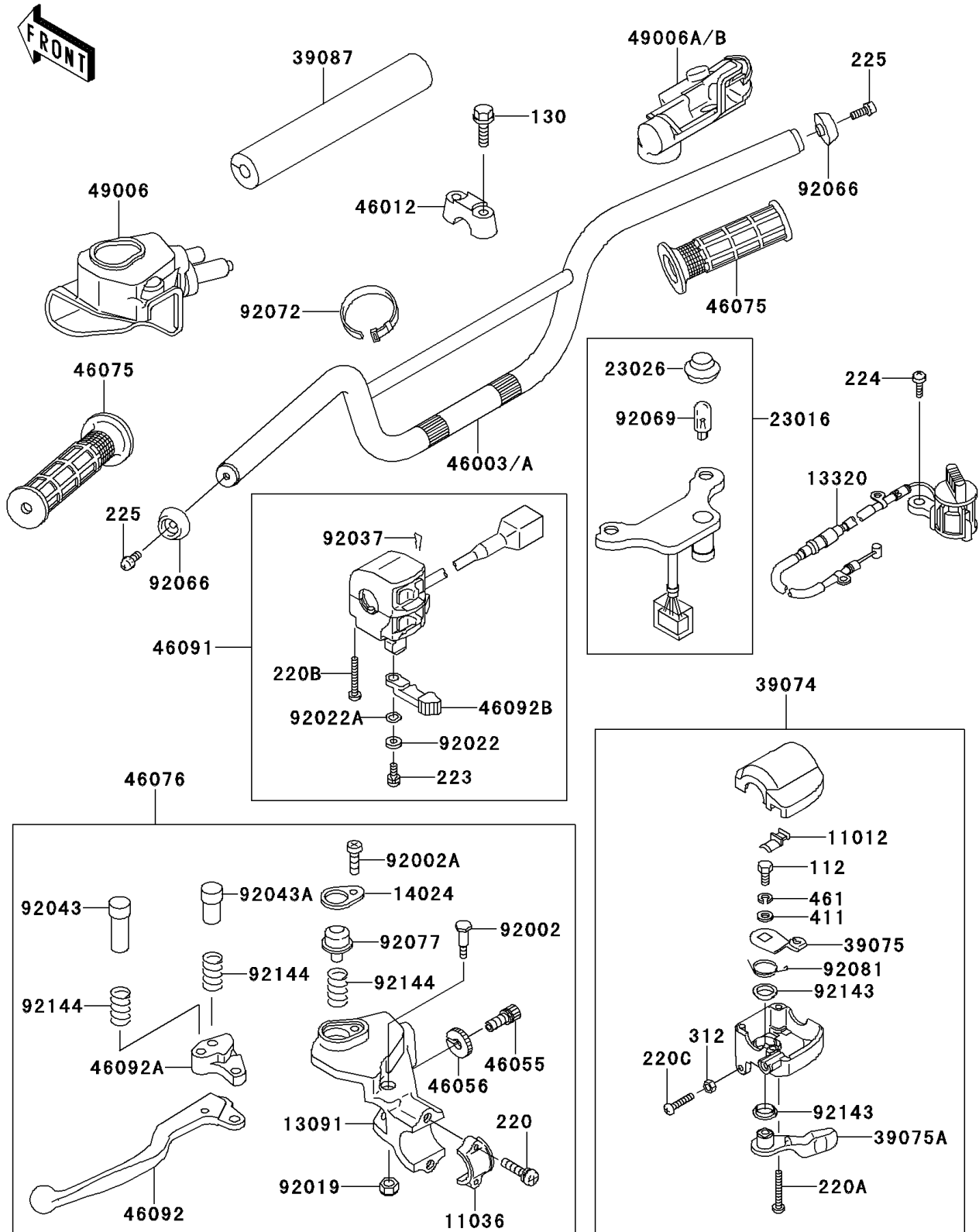


# 1997 Mojave 250 PARTS DIAGRAM

Handlebar

F2310



# 1997 Mojave 250 PARTS LIST

## Handlebar

ITEM NAME	PART NUMBER	QUANTITY
CAP (Ref # 11012)	11012-1425	1
BRACKET-A,LEVER HOLDER (Ref # 11036)	11036-1297	1
HOLDER,LEVER (Ref # 13091)	13091-1456	1
LEVER-ASSY,REVERSE (Ref # 13320)	13320-1006	1
COVER,PARKING LEVER (Ref # 14024)	14024-1351	1
LAMP-ASSY,REVERSE (Ref # 23016)	23016-1105	1
LENS,PILOT,RED (Ref # 23026)	23026-1105	1
LEVER-ASSY-THROTTLE (Ref # 39074)	39074-1055	1
LEVER-THROTTLE,ARM (Ref # 39075)	39075-1054	1
LEVER-THROTTLE (Ref # 39075A)	39075-1059	1
PAD-HANDLE (Ref # 39087)	39087-1051	1
HANDLE,F.RED (Ref # 46003A)	46003-1369-CD	1
HOLDER-HANDLE (Ref # 46012)	46012-1168	2
SCREW,CABLE ADJUST,8MM (Ref # 46055)	46055-009	1
NUT,CABLE ADJUST (Ref # 46056)	46056-006	1
GRIP (Ref # 46075)	46075-1056	2
LEVER-ASSY-GRIP,LH (Ref # 46076)	46076-1137	1
HOUSING-ASSY-CONTROL,LH (Ref # 46091)	46091-1477	1
LEVER-GRIP,CLUTCH (Ref # 46092)	46092-1137	1
LEVER-GRIP,PARKING (Ref # 46092A)	46092-1138	1
LEVER-GRIP,CHOKE (Ref # 46092B)	46092-1139	1
BOOT,LH (Ref # 49006)	49006-1197	1
BOOT,RH (Ref # 49006A)	49006-1198	1
BOLT,LEVER SET (Ref # 92002)	92002-1833	1
BOLT,TAPPING (Ref # 92002A)	92002-1834	1
NUT,LOCK,6MM (Ref # 92019)	92019-008	1
WASHER,5MM (Ref # 92022)	92022-1837	1
WASHER,WAVE,5MM (Ref # 92022A)	92022-1838	1
CLAMP,CLIP (Ref # 92037)	92037-1836	1

# 1997 Mojave 250 PARTS LIST

## Handlebar

ITEM NAME	PART NUMBER	QUANTITY
PIN,5X15 (Ref # 92043)	92043-1341	1
PIN,5X11 (Ref # 92043A)	92043-1342	1
PLUG,HANDLE (Ref # 92066)	92066-1191	2
BULB,12V 3.4W (Ref # 92069)	92069-1007	1
BAND,L=149 (Ref # 92072)	92072-031	1
KNOB,PARKING LEVER (Ref # 92077)	92077-1076	1
SPRING (Ref # 92081)	92081-1685	1
COLLAR (Ref # 92143)	92143-1138	2
SPRING (Ref # 92144)	92144-1058	3
BOLT-UPSET (Ref # 112)	112D0614	1
BOLT-FLANGED (Ref # 130)	130P0860	4
SCREW-PAN-CROS (Ref # 220)	220C0514	2
SCREW-PAN-CROS (Ref # 220A)	220C0530	2
SCREW-PAN-CROS (Ref # 220B)	220C0535	2
SCREW-PAN-CROS,6X30,BLACK (Ref # 220C)	220C0630	1
SCREW-PAN-WS-CROS (Ref # 223)	223C0512	1
SCREW-PAN-WP-CROS,5X20 (Ref # 224)	224B0520	2
SCREW-PAN-WSP-CROS,6X20 (Ref # 225)	225C0620	2
NUT-HEX,6MM,BLACK (Ref # 312)	312C0600	1
WASHER-PLAIN,6MM (Ref # 411)	411E0600	1
WASHER-SPRING (Ref # 461)	461L0600	1