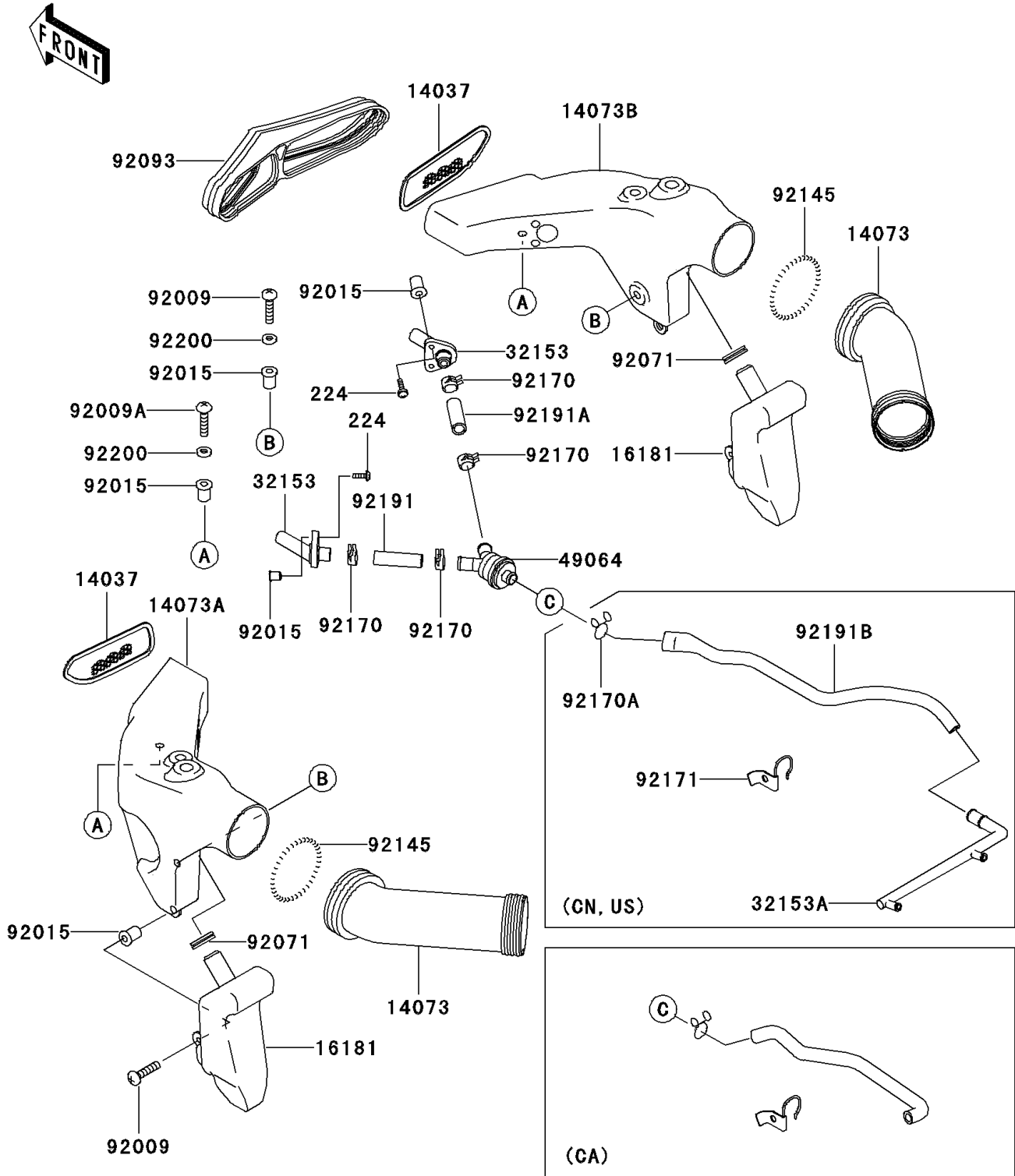


# 2008 ZZR<sup>®</sup> 600

## PARTS DIAGRAM

### Air Duct

E1131



Ref. Fuel Evaporative System

# 2008 ZZR® 600

## PARTS LIST

### Air Duct

ITEM NAME	PART NUMBER	QUANTITY
SCREW-PAN-WP-CROS,5X20 (Ref # 224)	224C0520	4
SCREEN (Ref # 14037)	14037-1270	2
DUCT,INNER (Ref # 14073)	14073-1720	2
DUCT,LH (Ref # 14073A)	14073-1767	1
DUCT,RH (Ref # 14073B)	14073-1768	1
TANK-RESONATOR (Ref # 16181)	16181-1095	2
PIPE (Ref # 32153)	32153-1342	2
PIPE (Ref # 32153A)	32153-1344	1
FILTER-AIR (Ref # 49064)	49064-1061	1
SCREW,5X16 (Ref # 92009)	92009-1909	4
SCREW,5X20 (Ref # 92009A)	92009-1934	2
NUT,WELL,5MM (Ref # 92015)	92015-1757	10
GROMMET (Ref # 92071)	92071-1259	2
SEAL (Ref # 92093)	92093-1535	1
SPRING,BOOT (Ref # 92145)	92145-1162	2
CLAMP (Ref # 92170)	92170-1909	4
CLAMP (Ref # 92170A)	92170-1997	1
CLAMP (Ref # 92171)	92171-1236	1
TUBE,AIR VENT,LH (Ref # 92191)	92191-1500	1
TUBE,AIR VENT,RH (Ref # 92191A)	92191-1501	1
TUBE (Ref # 92191B)	92191-1502	1
WASHER,NYLON,5.3X11.5X0.5 (Ref # 92200)	92200-1480	4