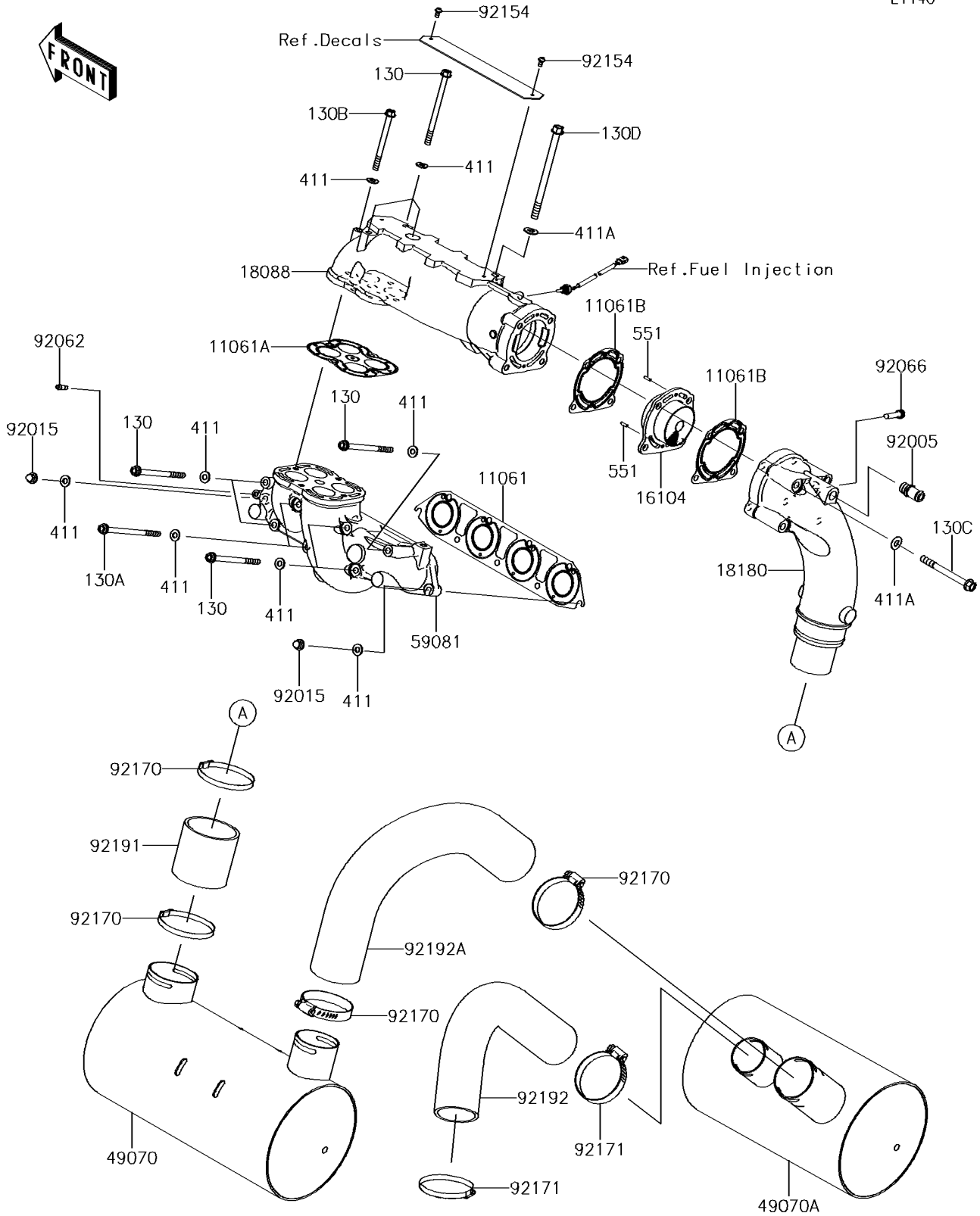


# 2015 JET SKI® ULTRA® 310LX PARTS DIAGRAM

Muffler(s)

E1140



## 2015 JET SKI® ULTRA® 310LX PARTS LIST

### Muffler(s)

| ITEM NAME                             | PART NUMBER | QUANTITY |
|---------------------------------------|-------------|----------|
| GASKET,MANIFOLD EXHAUST (Ref # 11061) | 11061-3742  | 1        |
| GASKET,PIPE EXHAUST (Ref # 11061A)    | 11061-3762  | 1        |
| GASKET,MUFFLER (Ref # 11061B)         | 11061-3768  | 2        |
| BOLT-FLANGED,8X120 (Ref # 130)        | 130CD08120  | 8        |
| BOLT-FLANGED,8X140 (Ref # 130A)       | 130CD08140  | 2        |
| BOLT-FLANGED,8X95 (Ref # 130B)        | 130CD0895   | 1        |
| BOLT-FLANGED,10X100 (Ref # 130C)      | 130CD10100  | 4        |
| BOLT-FLANGED,10X150 (Ref # 130D)      | 130CD10150  | 1        |
| FILTER-COMP,MUFFLER (Ref # 16104)     | 16104-0012  | 1        |
| PIPE-EXHAUST (Ref # 18088)            | 18088-3730  | 1        |
| BODY-MUFFLER (Ref # 18180)            | 18180-0825  | 1        |
| WASHER-PLAIN,8MM (Ref # 411)          | 411S0800    | 13       |
| WASHER-PLAIN,10MM (Ref # 411A)        | 411S1000    | 5        |
| MUFFLER-COMP,1ST (Ref # 49070)        | 49070-0749  | 1        |
| MUFFLER-COMP,2ND (Ref # 49070A)       | 49070-0750  | 1        |
| PIN-DOWEL (Ref # 551)                 | 551R0412    | 2        |
| MANIFOLD-EXHAUST (Ref # 59081)        | 59081-3744  | 1        |
| FITTING (Ref # 92005)                 | 92005-0728  | 1        |
| NUT,CAP,8MM (Ref # 92015)             | 92015-1371  | 2        |
| NOZZLE (Ref # 92062)                  | 92062-0562  | 1        |
| PLUG,FILTER STOPPER (Ref # 92066)     | 92066-0764  | 1        |
| BOLT,SOCKET,5X10 (Ref # 92154)        | 92154-0211  | 2        |
| CLAMP (Ref # 92170)                   | 92170-3764  | 4        |
| CLAMP (Ref # 92171)                   | 92171-3715  | 2        |
| TUBE,PIPE EX-MUFFLER (Ref # 92191)    | 92191-3986  | 1        |
| TUBE,2ND-TAIL PIPE (Ref # 92192)      | 92192-3762  | 1        |
| TUBE,1ST-2ND (Ref # 92192A)           | 92192-3860  | 1        |