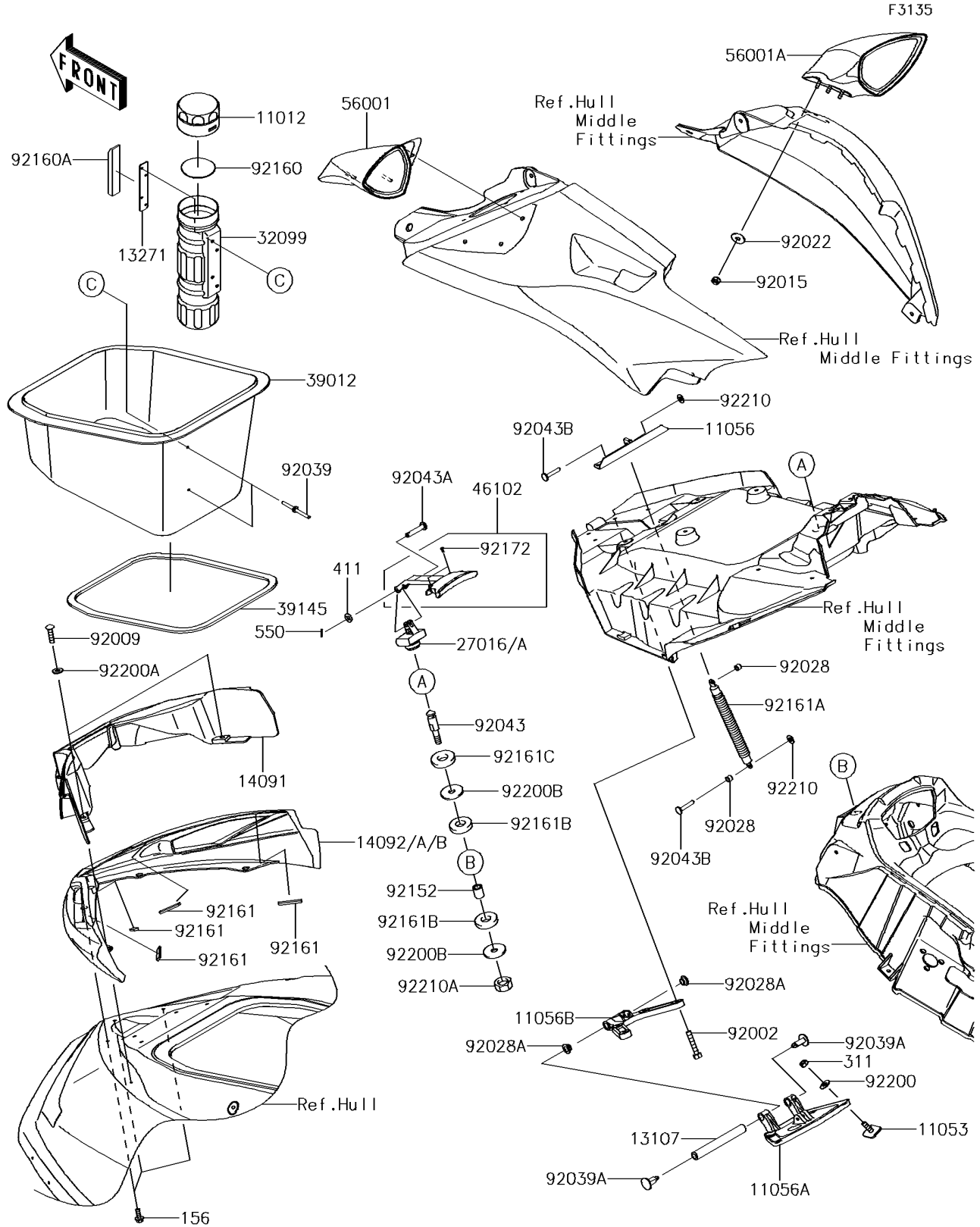


# 2014 JET SKI® ULTRA® 310X PARTS DIAGRAM

## Hull Front Fittings



## 2014 JET SKI® ULTRA® 310X PARTS LIST

### Hull Front Fittings

ITEM NAME	PART NUMBER	QUANTITY
CAP,FIRE EXTINGUISHER (Ref # 11012)	11012-3766	1
BRACKET (Ref # 11053)	11053-3776	4
BRACKET (Ref # 11056)	11056-3703	1
BRACKET (Ref # 11056A)	11056-3725	1
BRACKET (Ref # 11056B)	11056-3726	1
SHAFT,FRONT HINGE (Ref # 13107)	13107-3802	1
PLATE,FIRE EXTINGUISHER (Ref # 13271)	13271-3775	1
COVER,FR,INSIDE (Ref # 14091)	14091-3828	1
COVER,FR,TOP,M.S.WHITE (Ref # 14092)	14092-0775-31Y	1
LOCK-ASSY,HATCH (Ref # 27016A)	27016-3761	1
CASE,FIRE EXTINGUISHER (Ref # 32099)	32099-3769	1
CASE-STORAGE (Ref # 39012)	39012-0034	1
TRIM-SEAL,L=1627 (Ref # 39145)	39145-3807	1
ROD,HATCH LOCK (Ref # 46102)	46102-3734	1
MIRROR-ASSY,LH,F.BLACK (Ref # 56001)	56001-0263-6Z	1
MIRROR-ASSY,RH,F.BLACK (Ref # 56001A)	56001-0264-6Z	1
BOLT,6X30 (Ref # 92002)	92002-3726	4
SCREW,TAPPING,6X20 (Ref # 92009)	92009-3842	2
NUT,LOCK,6MM (Ref # 92015)	92015-3766	6
WASHER,6.5X20X1.5 (Ref # 92022)	92022-3710	6
BUSHING (Ref # 92028)	92028-3765	2
BUSHING (Ref # 92028A)	92028-3770	2
RIVET (Ref # 92039)	92039-3783	2
RIVET (Ref # 92039A)	92039-3788	2
PIN (Ref # 92043)	92043-0754	1
PIN,6X33 (Ref # 92043A)	92043-0795	1
PIN,6X33 (Ref # 92043B)	92043-3748	2
COLLAR,8.2X14X16.2 (Ref # 92152)	92152-0979	1
DAMPER (Ref # 92160)	92160-3814	1

## 2014 JET SKI® ULTRA® 310X PARTS LIST

### Hull Front Fittings

ITEM NAME	PART NUMBER	QUANTITY
DAMPER (Ref # 92160A)	92160-3821	1
DAMPER,10X50X4 (Ref # 92161)	92161-1373	4
DAMPER,HATCH (Ref # 92161A)	92161-1580	1
DAMPER (Ref # 92161B)	92161-3739	2
DAMPER (Ref # 92161C)	92161-3747	1
SCREW,3X8 (Ref # 92172)	92172-3716	2
WASHER,6.5X16X1.0 (Ref # 92200)	92200-3712	4
WASHER,6.5X14.5X1.5 (Ref # 92200A)	92200-3775	2
BOLT-WP,5X16 (Ref # 156)	156R0516	3
NUT-HEX,6MM (Ref # 311)	311R0600	4
WASHER-PLAIN,6MM (Ref # 411)	411S0600	1
PIN-COTTER,1.6X15 (Ref # 550)	550S1615	1
WASHER,8.5X32X2 (Ref # 92200B)	92200-3786	2
NUT,SPEED,6MM (Ref # 92210)	92210-3739	2
NUT,LOCK,8MM (Ref # 92210A)	92210-3742	1