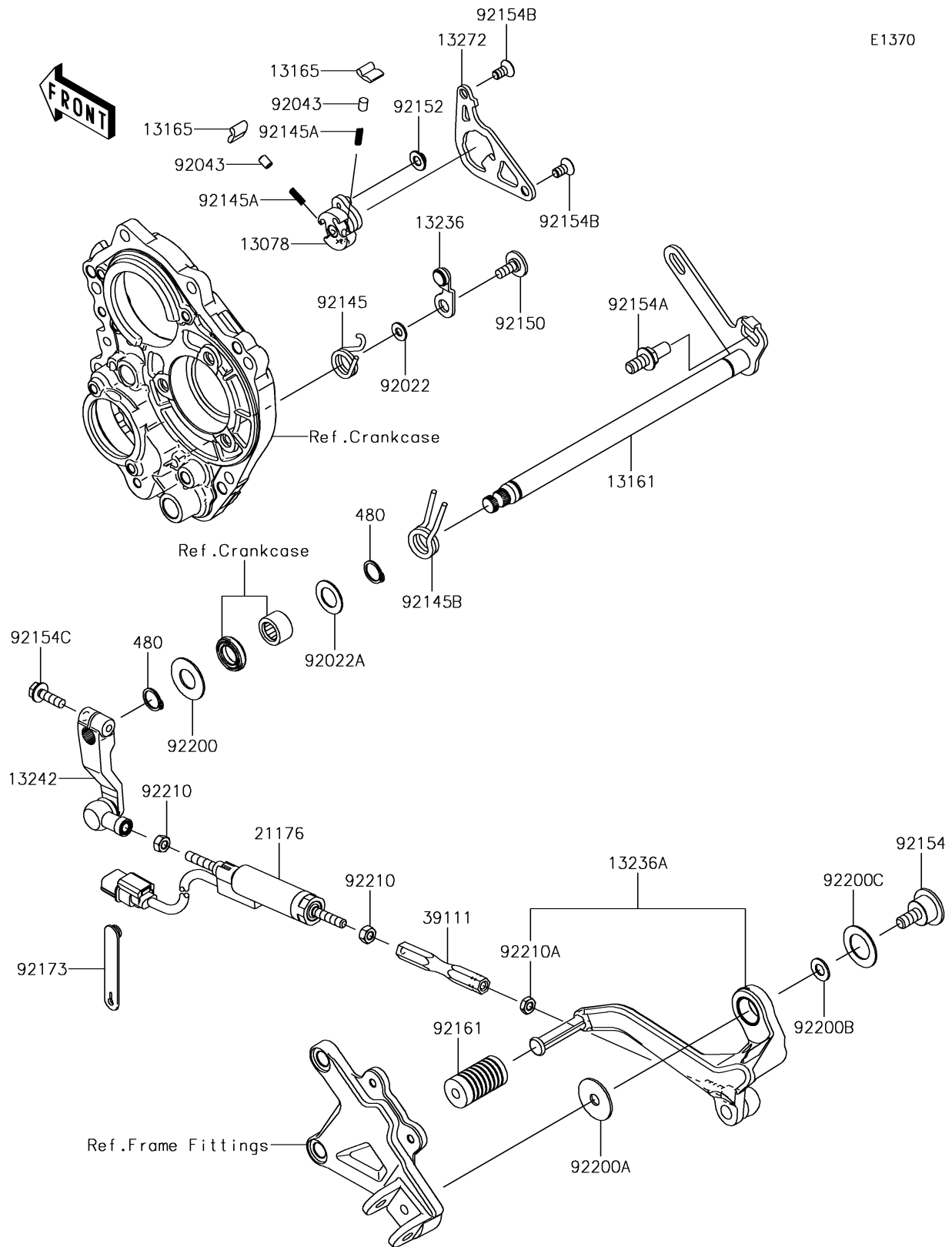


2018 NINJA® ZX™-10R ABS PARTS DIAGRAM

Gear Change Mechanism

E1370



2018 NINJA® ZX™-10R ABS PARTS LIST

Gear Change Mechanism

| ITEM NAME | PART NUMBER | QUANTITY |
|--|-------------|----------|
| RATCHET (Ref # 13078) | 13078-0012 | 1 |
| LEVER-COMP-CHANGE SHAFT (Ref # 13161) | 13161-0078 | 1 |
| PAWL (Ref # 13165) | 13165-0018 | 1 |
| LEVER-COMP,POSITION (Ref # 13236) | 13236-0192 | 1 |
| LEVER-COMP,CHANGE PEDAL (Ref # 13236A) | 13236-0769 | 1 |
| LEVER-ASSY-CHANGE (Ref # 13242) | 13242-0128 | 1 |
| PLATE (Ref # 13272) | 13272-2171 | 1 |
| SENSOR,QUICK SHIFTER (Ref # 21176) | 21176-0811 | 1 |
| ROD-TIE (Ref # 39111) | 39111-0338 | 1 |
| CIRCLIP-TYPE-C,14MM (Ref # 480) | 480J1400 | 1 |
| WASHER,6X12.8X1.2 (Ref # 92022) | 92022-1827 | 1 |
| WASHER,14.3X24X1 (Ref # 92022A) | 92022-272 | 1 |
| PIN,PLUNGER (Ref # 92043) | 92043-1676 | 1 |
| SPRING (Ref # 92145) | 92145-0849 | 1 |
| SPRING (Ref # 92145A) | 92145-1490 | 1 |
| SPRING (Ref # 92145B) | 92145-1734 | 1 |
| BOLT,SOCKET,6X16 (Ref # 92150) | 92150-1673 | 1 |
| COLLAR (Ref # 92152) | 92152-1414 | 1 |
| BOLT (Ref # 92154) | 92154-1884 | 1 |
| BOLT,RETURN SPRING (Ref # 92154A) | 92154-1885 | 1 |
| BOLT,TORX,6X8.7 (Ref # 92154B) | 92154-1886 | 1 |
| BOLT,FLANGED,6X20 (Ref # 92154C) | 92154-2090 | 1 |
| DAMPER (Ref # 92161) | 92161-0871 | 1 |
| CLAMP (Ref # 92173) | 92173-1526 | 1 |
| WASHER (Ref # 92200) | 92200-0265 | 1 |
| WASHER,8.2X30X1.5 (Ref # 92200A) | 92200-0810 | 1 |
| WASHER,8.2X18X1.2 (Ref # 92200B) | 92200-0811 | 1 |
| WASHER,18.3X30X1 (Ref # 92200C) | 92200-0812 | 1 |
| NUT,6MM (Ref # 92210) | 92210-1100 | 1 |

2018 NINJA® ZX™-10R ABS PARTS LIST

Gear Change Mechanism

| ITEM NAME | PART NUMBER | QUANTITY |
|------------------------------------|-------------|----------|
| NUT,LEFT HANDED,6MM (Ref # 92210A) | 92210-1101 | 1 |