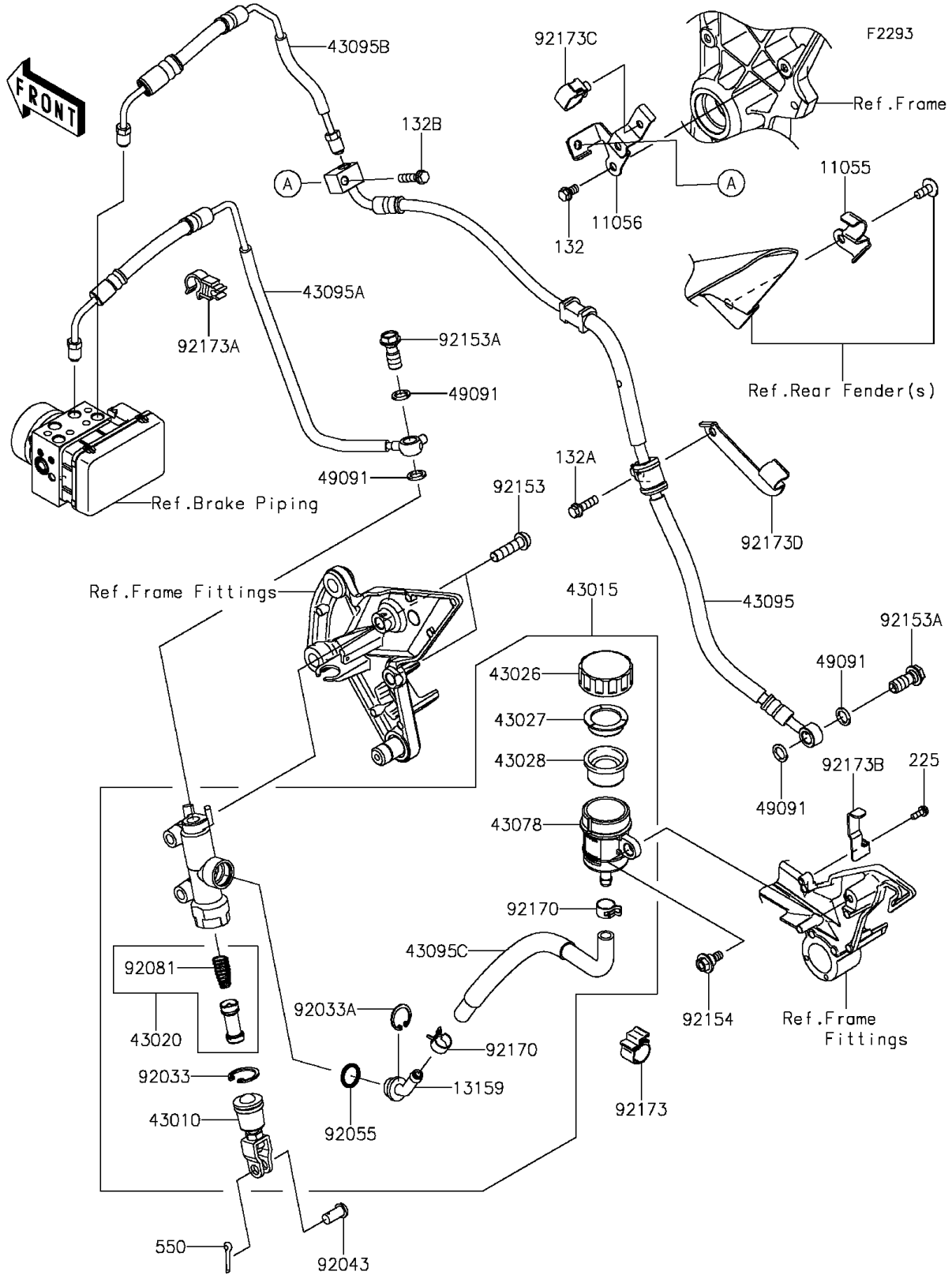


# 2015 Z1000 ABS PARTS DIAGRAM

## Rear Master Cylinder



## 2015 Z1000 ABS PARTS LIST

### Rear Master Cylinder

ITEM NAME	PART NUMBER	QUANTITY
BRACKET (Ref # 11055)	11055-1785	1
BRACKET (Ref # 11056)	11056-3887	1
CONNECTOR (Ref # 13159)	13159-0008	1
BOLT-FLANGED-SMALL,6X10 (Ref # 132)	132BA0610	1
BOLT-FLANGED-SMALL,6X20 (Ref # 132A)	132BA0620	1
BOLT-FLANGED-SMALL,6X25 (Ref # 132B)	132BA0625	1
SCREW-PAN-WSP-CROS,4X12 (Ref # 225)	225AB0412	1
ROD-ASSY-BRAKE (Ref # 43010)	43010-1062	1
CYLINDER-ASSY-MASTER,RR (Ref # 43015)	43015-0596	1
PISTON-COMP-BRAKE (Ref # 43020)	43020-1057	1
CAP-BRAKE (Ref # 43026)	43026-0009	1
PLATE-DIAPHRAGM (Ref # 43027)	43027-1053	1
DIAPHRAGM (Ref # 43028)	43028-1065	1
RESERVOIR (Ref # 43078)	43078-0060	1
HOSE-BRAKE,RR (Ref # 43095)	43095-0510	1
HOSE-BRAKE,HU-RR M/C (Ref # 43095A)	43095-0785	1
HOSE-BRAKE,HU-RR CALIPER (Ref # 43095B)	43095-0786	1
HOSE-BRAKE,RR M/C (Ref # 43095C)	43095-0811	1
WASHER-SEAL,10.1X14.5X1.5 (Ref # 49091)	49091-0001	4
PIN-COTTER,2.0X15 (Ref # 550)	550AA2015	1
RING-SNAP,20.9X24.6X1.2 (Ref # 92033)	92033-0079	1
RING-SNAP,20.5MM (Ref # 92033A)	92033-1186	1
PIN,8X17 (Ref # 92043)	92043-0104	1
RING-O,14.8X2.4 (Ref # 92055)	92055-0741	1
SPRING,MASTER CYLINDER (Ref # 92081)	92081-1737	1
BOLT,SOCKET,8X30 (Ref # 92153)	92153-0393	2
BOLT,OIL,L=23 (Ref # 92153A)	92153-0627	2
BOLT,FLANGED,6X16 (Ref # 92154)	92154-0385	1
CLAMP,HOSE (Ref # 92170)	92170-1091	2

## 2015 Z1000 ABS PARTS LIST

### Rear Master Cylinder

ITEM NAME	PART NUMBER	QUANTITY
CLAMP,CLIP (Ref # 92173)	92173-0127	1
CLAMP (Ref # 92173A)	92173-0170	1
CLAMP (Ref # 92173B)	92173-0221	1
CLAMP,HOLDER CLIP (Ref # 92173C)	92173-0868	1
CLAMP (Ref # 92173D)	92173-1248	1